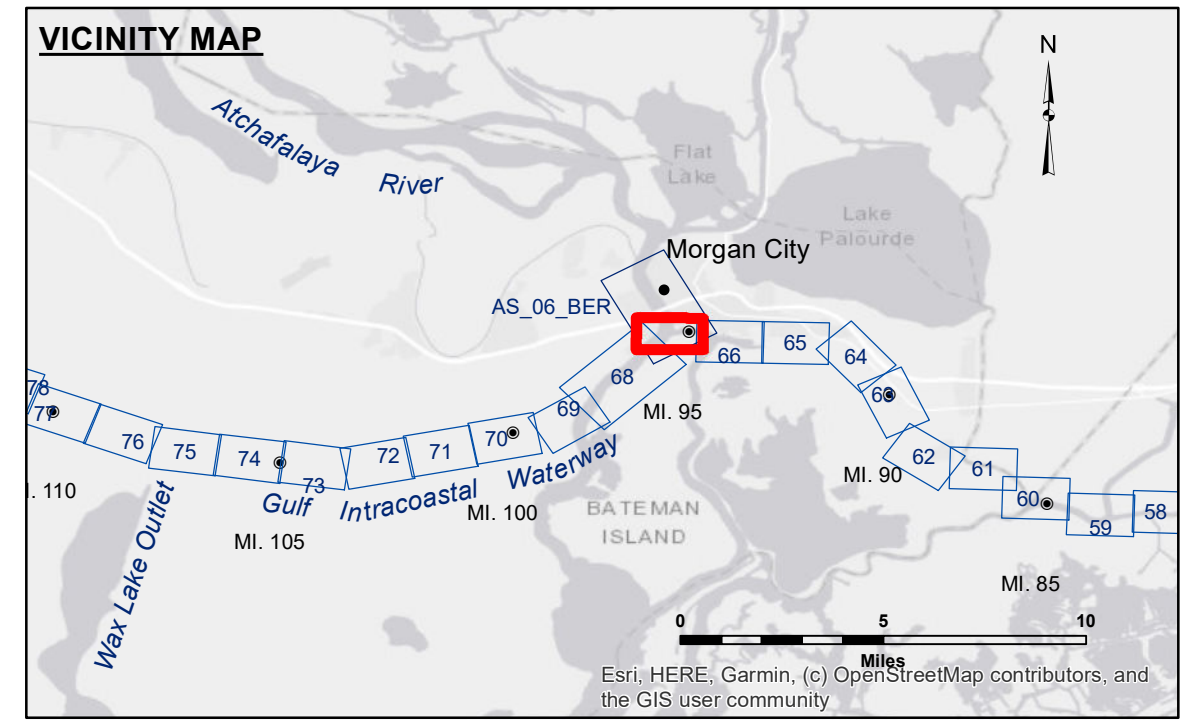


Accession: The United States Government makes these data and the recipient accepts and uses them with the express understanding that the recipient is not to be held liable for any errors, omissions, or inaccuracies in the data, and that the recipient is not to be held liable for any damage or injury resulting from the use of the data. The recipient is not to be held liable for any damage or injury resulting from the use of the data.

Disclaimer: The information depicted on this map represents the results of a survey conducted by the United States Army Corps of Engineers. The information is not to be used for any purpose other than that for which it was collected. The recipient is not to be held liable for any damage or injury resulting from the use of the data.

Submitted:	Surveyed By:	RYLAND/SIMMONS
Recommended:	Placed By:	BD
Approved:	Checked By:	AOJH

U.S. ARMY CORPS OF ENGINEERS
NEW ORLEANS DISTRICT



LEGEND

--- Federal Navigation Channel	○ Cable Area	□ Borrow Area	■ -12' and above
— Federal Navigation Center Line	□ Placement Area	● Shoalest Sounding**	■ -12' to -15'
— As-built Pipeline/Cable	□ Anchorage Area	★ Beacon, General	■ -15' to -18'
..... Unconfirmed Pipeline/Cable	⊗ Obstruction Point	◆ Red Navigation Buoy	■ -18' to -20'
— Project Depth Contour	✈ Wrecks-Submerged	◆ Green Navigation Buoy	■ -20' and below

NOTES:

Horizontal Coordinate System:
North American Datum of 1983 (NAD83), projected to the State Plane Coordinate System (SPCS), Louisiana South Zone. Distance units in U.S. Survey Feet.

Vertical Datum:
Soundings are shown in feet and indicate depths below Mean Low Gulf Datum (MLG). Datum Relationships for Lower Atchafalaya River at Morgan City (03780) as of 2017: 0.0' NAVD88 (2009.55) = 1.89' MLG

The location of navigation aids are based on and provided by the U.S. Coast Guard.

2015 Aerial Photography data source: NAIP, 1998 DOQQ imagery shown in green from USGS.

Reference is N.O.A.A. Navigation Chart No. 11355.

** Shoalest Sounding per Quarter per Reach.

*** High frequency (200 kHz) survey data represents the first signal return at a sounding location and will include suspended solids, known as "fluff", if present. Low frequency (20 kHz) survey data normally penetrates through this "fluff" layer to depict elevations of consolidated bottom material. Low frequency accuracies may vary depending on channel conditions and fathometer settings.

Gage Reading: MORGAN CITY: 3.15 MLG AVG.
Sea Conditions: CALM
Vessel Name: M/V LAFOURCHE
Survey Type: CS
Sounding Frequency***: HIGH

0 500 1,000 Feet

GULF INTRACOASTAL WATERWAY
20 GRAND POINT
GL_67_BBW_20250205_CS
05 February 2025

Sheet Reference Number
67 of 191

Revision Number:
4.2-20250420