

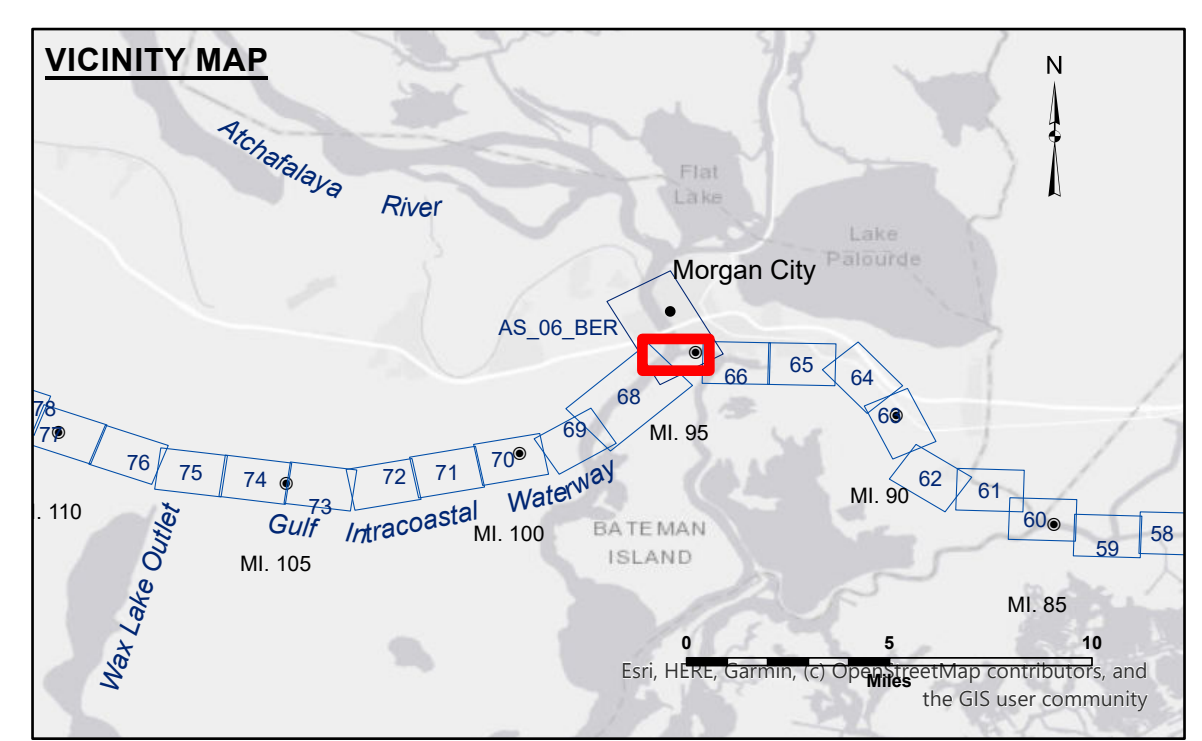
DISCLAIMER: The data presented in this report were derived from the results of data collection and processing for a specific US Army Corps of Engineers activity and indicates the general existing conditions. As such, the user is responsible for the accuracy, completeness, and reliability of the data for other than its intended purpose. The user is responsible for the results of any application of the data for other than its intended purpose. The data are not to be used for any other purpose without the express written consent of the US Army Corps of Engineers. The data are not to be used for any other purpose without the express written consent of the US Army Corps of Engineers. The data are not to be used for any other purpose without the express written consent of the US Army Corps of Engineers.

DISCLAIMER: The United States Government furnishes these data and the recipient agrees and uses them with the express understanding that the data are not to be used for any other purpose without the express written consent of the US Army Corps of Engineers. The data are not to be used for any other purpose without the express written consent of the US Army Corps of Engineers. The data are not to be used for any other purpose without the express written consent of the US Army Corps of Engineers.

Submitted:	Surveyed By:	ADAMS/CHAMPINE
Recommended:	Plotted By:	BD
Approved:	Checked By:	AO/JH

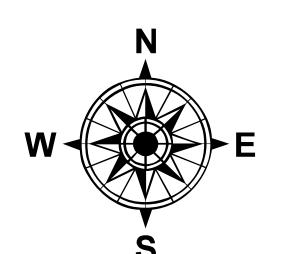
U.S. ARMY CORPS OF ENGINEERS
NEW ORLEANS DISTRICT

**GULF INTRACOASTAL WATERWAY
20 GRAND POINT
GL_67_BBW_20250418_CS
18 April 2025**

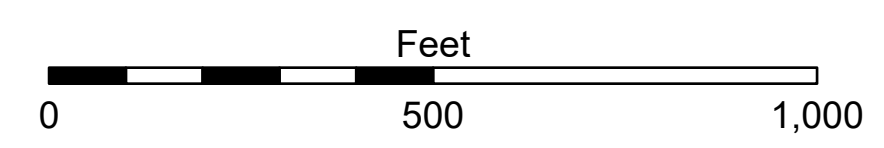


LEGEND

--- Federal Navigation Channel	○ Cable Area	□ Borrow Area	■ -12' and above
— Federal Navigation Center Line	□ Placement Area	● Shoalest Sounding**	□ -12' and below
— As-built Pipeline/Cable	⊗ Anchorage Area	★ Beacon, General	
..... Unconfirmed Pipeline/Cable	⊗ Obstruction Point	♦ Red Navigation Buoy	
— Project Depth Contour	⚓ Wrecks-Submerged	♦ Green Navigation Buoy	



Gage Reading: MORGAN CITY: 5.64 MLG AVG.
Sea Conditions: 0-1FT
Vessel Name: M/V VALENTOUR
Survey Type: CS
Sounding Frequency***: HIGH



NOTES:
Horizontal Coordinate System: North American Datum of 1983 (NAD83), projected to the State Plane Coordinate System (SPCS), Louisiana South Zone. Distance units in U.S. Survey Feet.
Vertical Datum: Soundings are shown in feet and indicate depths below Mean Low Gulf Datum (MLG). Datum Relationships for Lower Atchafalaya River at Morgan City (03780) as of 2025: 0.0' NAVD88 (2009.55) = 2.19' MLG
The location of navigation aids are based on and provided by the U.S. Coast Guard.
2021 Aerial Photography data source: NAIP
Reference is N.O.A.A. Navigation Chart No. 11355.
** Shoalest Sounding per Quarter per Reach.
*** High frequency (200 kHz) survey data represents the first signal return at a sounding location and will include suspended solids, known as "fluff", if present. Low frequency (20 kHz) survey data normally penetrates through this "fluff" layer to depict elevations of consolidated bottom material. Low frequency accuracies may vary depending on channel conditions and fathometer settings.

**Sheet
Reference
Number
67 of 191**