

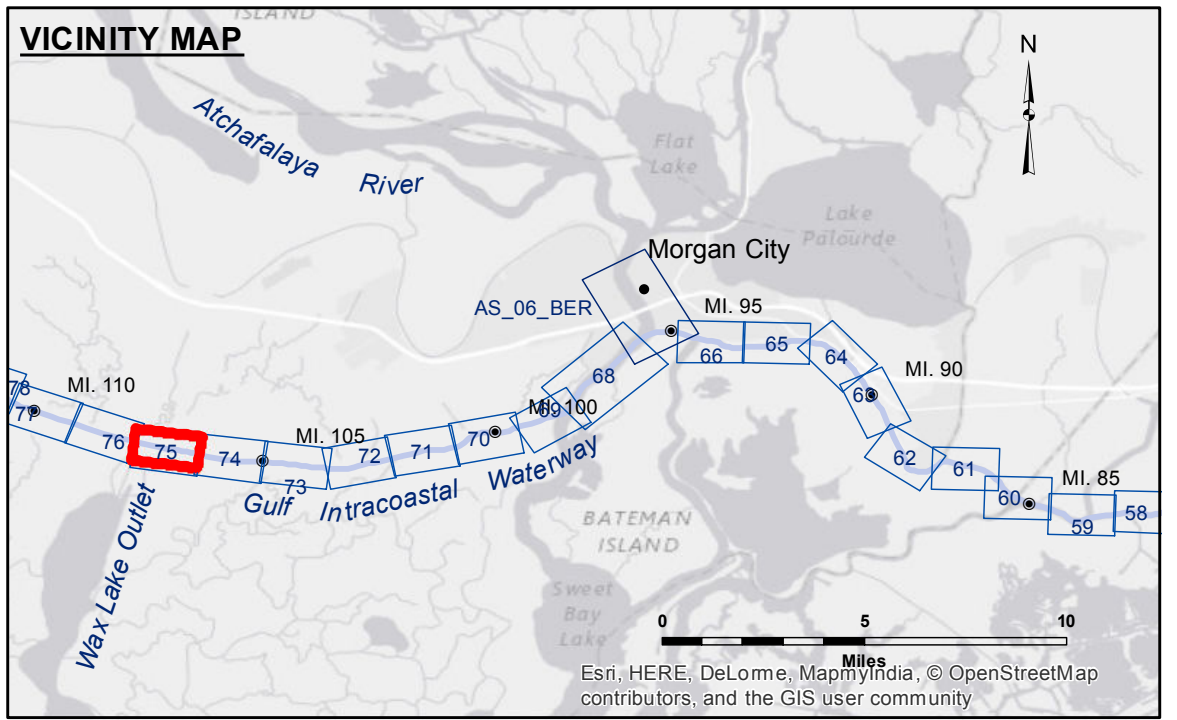
DISCLAIMER: The United States Government furnishes this data and the recipient accepts and uses them with the express understanding that the data is not to be used for any purpose other than that for which it was provided. The user is responsible for the accuracy, completeness, reliability, usability or suitability for any particular purpose of the data. The user shall indemnify and hold the United States Government harmless from and against all claims, damages, losses, and expenses, including reasonable attorneys' fees, incurred by the United States Government as a result of the use of the data for any purpose other than that for which it was provided. The information depicted on this map represents the results of a survey conducted on or about the date of the survey. The user is responsible for the accuracy, completeness, reliability, usability or suitability for any particular purpose of the data. The user shall indemnify and hold the United States Government harmless from and against all claims, damages, losses, and expenses, including reasonable attorneys' fees, incurred by the United States Government as a result of the use of the data for any purpose other than that for which it was provided.

Submitted:	DR:JH
Recommended:	BD
Approved:	AC

U.S. ARMY CORPS OF ENGINEERS
NEW ORLEANS DISTRICT

GULF INTRACOASTAL WATERWAY
WAX LAKE OUTLET
GI_75_WLO_20161207
07 December 2016

Sheet
Reference
Number
75 of 191



LEGEND

--- Federal Navigation Channel	● Cable Area	□ Borrow Area	■ -12' and above
— Federal Navigation Center Line	□ Placement Area	● Shoalest Sounding**	□ -12' and below
— As-built Pipeline/Cable	□ Anchorage Area	★ Beacon, General	
..... Unconfirmed Pipeline/Cable	⊗ Obstruction Point	◆ Red Navigation Buoy	
— Project Depth Contour	⚓ Wrecks-Submerged	◆ Green Navigation Buoy	

Gage Reading: BAYOU SALE: 2.72 MLG
 Sea Conditions: CALM
 Vessel Name: O189
 Survey Type: CONDITION
 Sounding Frequency***: HIGH

North Arrow
 Scale: 0 to 1,000 Feet

NOTES:

Horizontal Coordinate System: North American Datum of 1983 (NAD83), projected to the State Plane Coordinate System (SPCS), Louisiana South Zone. Distance units in U.S. Survey Feet.

Vertical Datum: Soundings are shown in feet and indicate depths below Mean Low Gulf Datum (MLG).

The location of navigation aids are base on and provided by the U.S. Coast Guard.

2010 Aerial Photography data source: NAIP: 1998 DOQQ imagery shown in green from USGS.

Reference is N.O.A. Navigation Chart No. 11355.

** Shoalest Sounding per Quarter per Reach.

*** High frequency (200 kHz) survey data represents the first signal return at a sounding location and will include suspended solids, known as "fluff", if present. Low frequency (20 kHz) survey data normally penetrates through this "fluff" layer to depict elevations of consolidated bottom material. Low frequency accuracies may vary depending on channel conditions and fathometer settings.