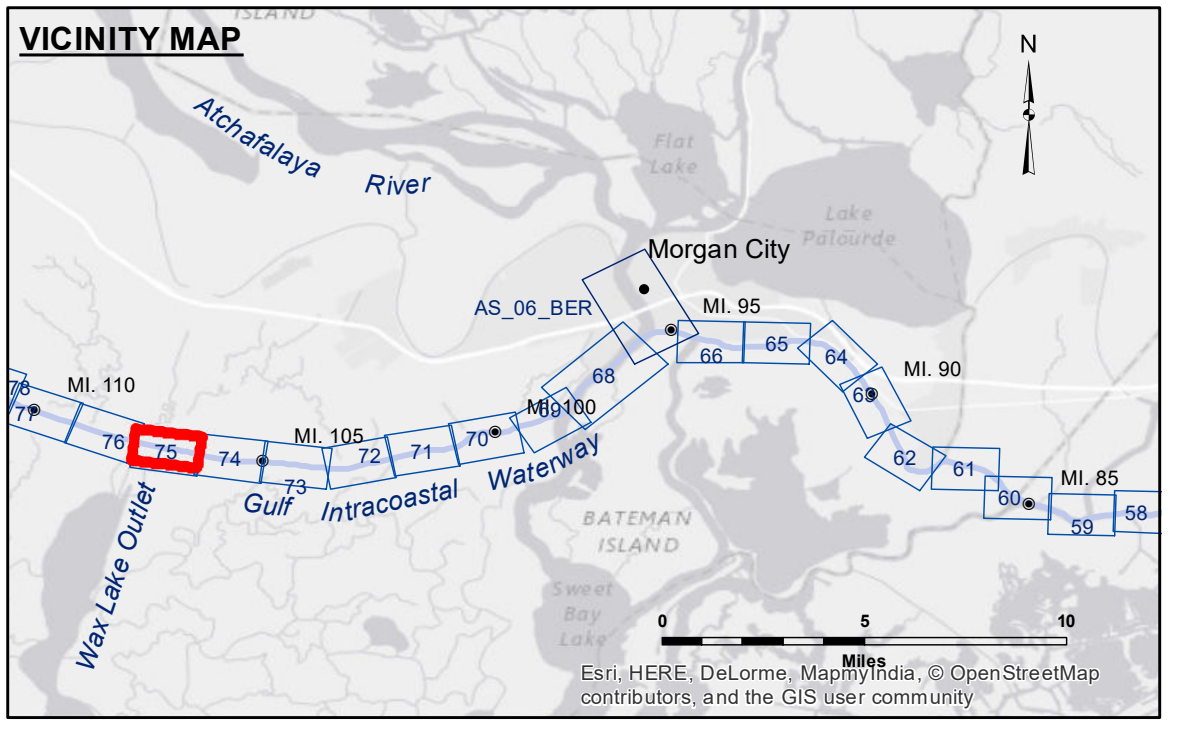


**DISCLAIMER**  
 The United States Government furnishes these data and the recipient accepts and uses them with the express understanding that they are not to be used for any purpose other than that for which they were prepared, and that the Government makes no warranty, expressed or implied, concerning the accuracy, completeness, or reliability of the data for other than its intended purpose. The user is responsible for the results obtained from the application of the data for other than its intended purpose. These data belong to the Government. Therefore, the recipient may not transfer, copy, or disseminate these data to others without the written approval of the Army Corps of Engineers. The Army Corps of Engineers is not responsible for changes in the hydrographical conditions which develop after the date of the survey. The information depicted on this map represents the results of a survey conducted on the date indicated. It is not intended to represent the general condition existing at that time. Considered for internal use. Product maintainers should not rely solely upon this information.

U.S. ARMY CORPS OF ENGINEERS NEW ORLEANS DISTRICT		
Submitted:	Surveyed By: DR,JA	Plotted By: MS
Recommended:	Chief, Survey Section	Checked By: MS
Approved:	Chief, Waterways Maintenance Section	

**GULF INTRACOASTAL WATERWAY  
 WAX LAKE OUTLET  
 GI\_75\_WLO\_20171124\_CS  
 24 November 2017**

**Sheet  
 Reference  
 Number  
 75 of 191**



**LEGEND**

--- Federal Navigation Channel	○ Cable Area	□ Borrow Area	■ -12' and above
— Federal Navigation Center Line	□ Placement Area	● Shoalest Sounding**	□ -12' and below
— As-built Pipeline/Cable	□ Anchorage Area	★ Beacon, General	
..... Unconfirmed Pipeline/Cable	⊗ Obstruction Point	◆ Red Navigation Buoy	
— Project Depth Contour	✙ Wrecks-Submerged	◆ Green Navigation Buoy	

Gage Reading: BAYOU SALE: 2.90 MLG  
 Sea Conditions: CALM  
 Vessel Name: M/V BURRWOOD  
 Survey Type: CONDITION  
 Sounding Frequency\*\*\*: HIGH

**NOTES:**  
 Horizontal Coordinate System: North American Datum of 1983 (NAD83), projected to the State Plane Coordinate System (SPCS), Louisiana South Zone. Distance units in U.S. Survey Feet.  
 Vertical Datum: Soundings are shown in feet and indicate depths below Mean Low Gulf Datum (MLG).  
 The location of navigation aids are base on and provided by the U.S. Coast Guard.  
 2010 Aerial Photography data source: NAIP. 1998 DOQQ imagery shown in green from USGS.  
 Reference is N.O.A.A. Navigation Chart No. 11355.  
 \*\* Shoalest Sounding per Quarter per Reach.  
 \*\*\* High frequency (200 kHz) survey data represents the first signal return at a sounding location and will include suspended solids, known as "fluff", if present. Low frequency (20 kHz) survey data normally penetrates through this "fluff" layer to depict elevations of consolidated bottom material. Low frequency accuracies may vary depending on channel conditions and fathometer settings.