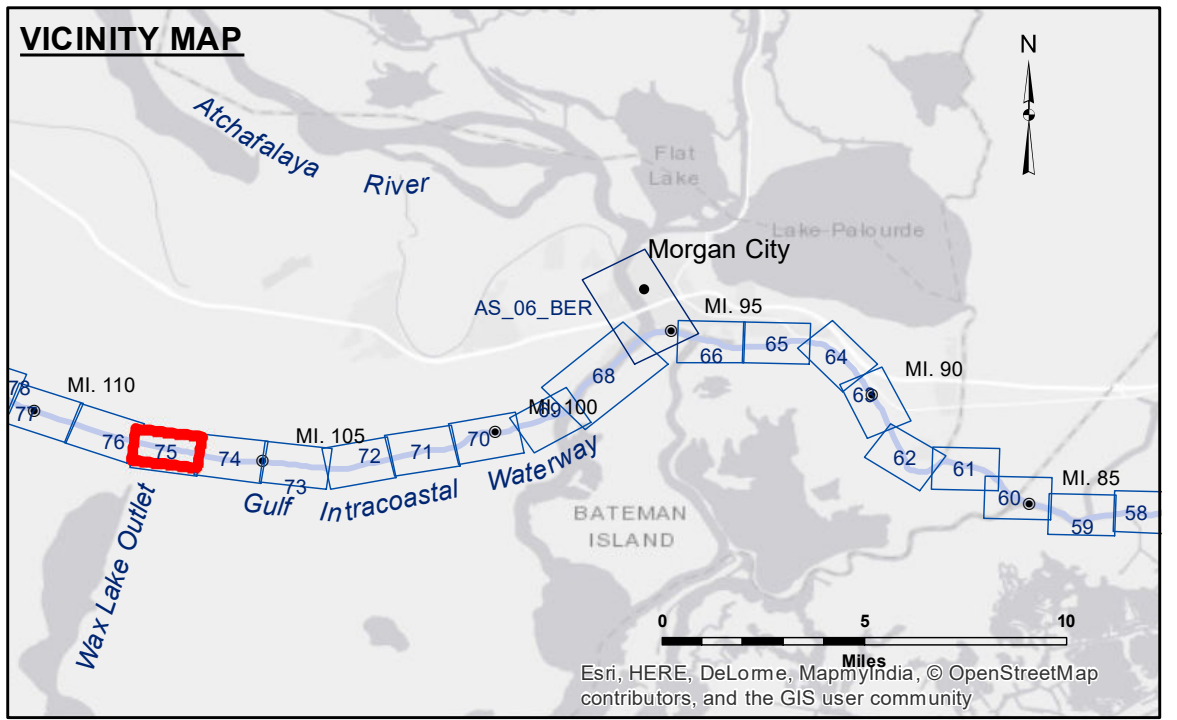


Accession: The United States Government furnishes this data and the recipient accepts and uses them with the express understanding that the data are not to be used for any purpose other than that for which they were originally prepared. The user is responsible for the results obtained from the application of the data for other than its intended purpose.

Disclaimer: Hydrographic survey data is subject to change due to several factors including but not limited to dredging, shoaling, and other natural processes. The Corps of Engineers does not assume any liability for changes in the hydrographic conditions when developed after the date of the survey. Product maintainers should not rely solely upon this information.

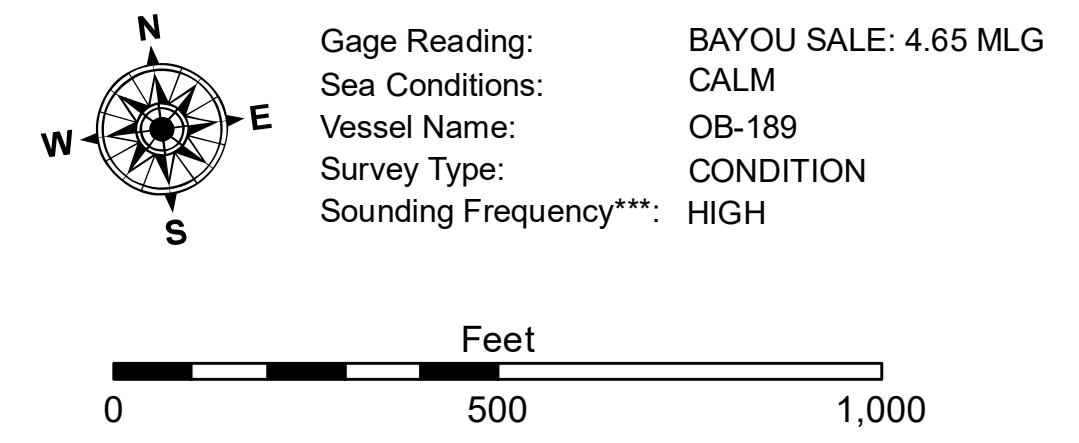
U.S. ARMY CORPS OF ENGINEERS NEW ORLEANS DISTRICT	
Submitted:	RYLAND/SONNER
Recommended:	Chet Survey Section
Approved:	Chet Waterways Maintenance Section
Surveyed By:	RYLAND/SONNER
Plotted By:	BD
Checked By:	AC

**GULF INTRACOASTAL WATERWAY
WAX LAKE OUTLET**
GI_75_WLO_20180419_CS
19 April 2018



LEGEND

--- Federal Navigation Channel	○ Cable Area	□ Borrow Area	■ -12' and above
— Federal Navigation Center Line	□ Placement Area	● Shoalest Sounding**	□ -12' and below
— As-built Pipeline/Cable	□ Anchorage Area	★ Beacon, General	
..... Unconfirmed Pipeline/Cable	⊗ Obstruction Point	◆ Red Navigation Buoy	
— Project Depth Contour	✶ Wrecks-Submerged	◆ Green Navigation Buoy	



NOTES:

Horizontal Coordinate System: North American Datum of 1983 (NAD83), projected to the State Plane Coordinate System (SPCS), Louisiana South Zone. Distance units in U.S. Survey Feet.

Vertical Datum: Soundings are shown in feet and indicate depths below Mean Low Gulf Datum (MLG).

The location of navigation aids are base on and provided by the U.S. Coast Guard.

2010 Aerial Photography data source: NAIP: 1998 DOQQ imagery shown in green from USGS.

Reference is N.O.A.A. Navigation Chart No. 11355.

** Shoalest Sounding per Quarter per Reach.

*** High frequency (200 kHz) survey data represents the first signal return at a sounding location and will include suspended solids, known as "fluff", if present. Low frequency (20 kHz) survey data normally penetrates through this "fluff" layer to depict elevations of consolidated bottom material. Low frequency accuracies may vary depending on channel conditions and fathometer settings.

Sheet Reference Number
75 of 191

Revision Number:
3.13-20160811