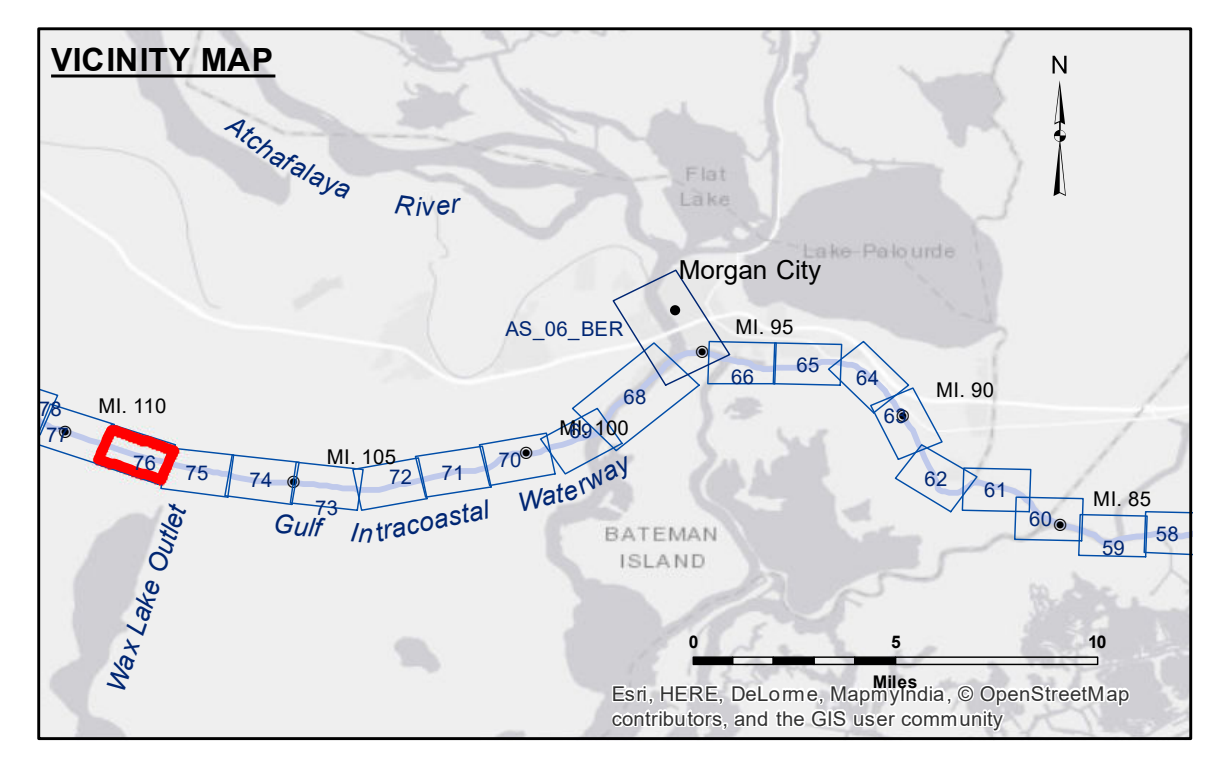


**DISCLAIMER**  
 The information depicted on this map represents the results of a hydrographic survey conducted under contract to the U.S. Army Corps of Engineers. The user is responsible for the accuracy, reliability, and availability of the data for any purpose other than that for which the data were collected. The user is responsible for the accuracy, reliability, and availability of the data for any purpose other than that for which the data were collected. The user is responsible for the accuracy, reliability, and availability of the data for any purpose other than that for which the data were collected. The user is responsible for the accuracy, reliability, and availability of the data for any purpose other than that for which the data were collected.

U.S. ARMY CORPS OF ENGINEERS NEW ORLEANS DISTRICT	
Submitted:	RYLAND/SONNER
Recommended:	BD
Approved:	AC



LEGEND			
--- Federal Navigation Channel	● Cable Area	■ Borrow Area	■ -12' and above
— Federal Navigation Center Line	□ Placement Area	● Shoalest Sounding**	□ -12' and below
— As-built Pipeline/Cable	⊗ Anchorage Area	★ Beacon, General	
..... Unconfirmed Pipeline/Cable	⊗ Obstruction Point	◆ Red Navigation Buoy	
— Project Depth Contour	⊗ Wrecks-Submerged	◆ Green Navigation Buoy	

Gage Reading: BAYOU SALE: 4.65 MLG  
 Sea Conditions: CALM  
 Vessel Name: OB-189  
 Survey Type: CONDITION  
 Sounding Frequency\*\*\*: HIGH

**NOTES:**  
 Horizontal Coordinate System: North American Datum of 1983 (NAD83), projected to the State Plane Coordinate System (SPCS), Louisiana South Zone. Distance units in U.S. Survey Feet.  
 Vertical Datum: Soundings are shown in feet and indicate depths below Mean Low Gulf Datum (MLG).  
 The location of navigation aids are base on and provided by the U.S. Coast Guard.  
 2010 Aerial Photography data source: NAIP. 1998 DOQQ imagery shown in green from USGS.  
 Reference is N.O.A. Navigation Chart No. 11355.  
 \*\* Shoalest Sounding per Quarter per Reach.  
 \*\*\* High frequency (200 kHz) survey data represents the first signal return at a sounding location and will include suspended solids, known as "fluff", if present. Low frequency (20 kHz) survey data normally penetrates through this "fluff" layer to depict elevations of consolidated bottom material. Low frequency accuracies may vary depending on channel conditions and fathometer settings.

**GULF INTRACOASTAL WATERWAY  
 WAX LAKE OUTLET**  
 GI\_76\_WLO\_20180419\_CS  
 19 April 2018

**Sheet Reference Number**  
 76 of 191