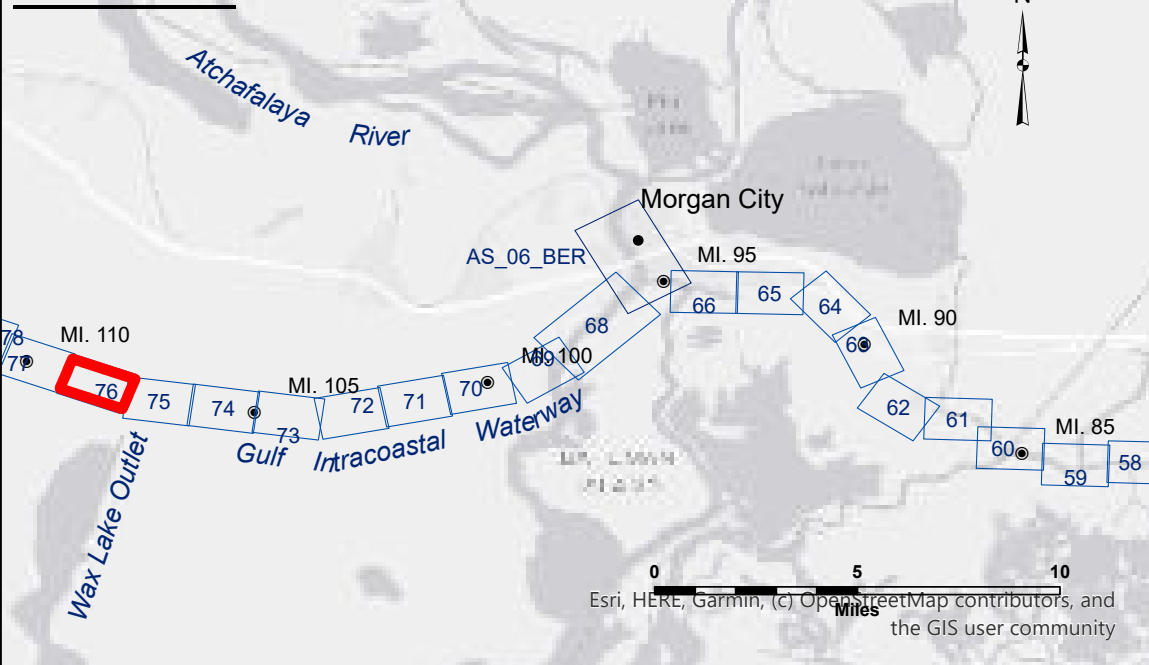


VICINITY MAP



LEGEND

--- Federal Navigation Channel

— Federal Navigation Center Line

— As-built Pipeline/Cable

..... Unconfirmed Pipeline/Cable

— Project Depth Contour

○ ○ Cable Area

□ Placement Area

□ Anchorage Area

⊗ Obstruction Point

✈ Wrecks-Submerged

□ Borrow Area

● Shoalest Sounding**

★ Beacon, General

◆ Red Navigation Buoy

◆ Green Navigation Buoy

■ -12' and above

□ -12' and below

Gage Reading: WAX LAKE OUTLET: 5.90 MLG

Sea Conditions: 0-1FT

Vessel Name: M/V VALENTOUR

Survey Type: CS

Sounding Frequency***: HIGH

NOTES:

Horizontal Coordinate System:
North American Datum of 1983 (NAD83), projected to the State Plane
Coordinate System (SPCS), Louisiana South Zone. Distance units in U.S. Survey Feet.

Vertical Datum:
Soundings are shown in feet and indicate depths below Mean Low Gulf Datum (MLG).

The location of navigation aids are base on and provided by the U.S. Coast Guard.

2021 Aerial Photography data source: NAIP

Reference is N.O.A.A. Navigation Chart No. 11355.

** Shoalest Sounding per Quarter per Reach.

*** High frequency (200 kHz) survey data represents the first signal return at a sounding location and will include suspended solids, known as "fluff", if present. Low frequency (20 kHz) survey data normally penetrates through this "fluff" layer to depict elevations of consolidated bottom material. Low frequency accuracies may vary depending on channel conditions and fathometer settings.

GULF INTRACOASTAL WATERWAY
WAX LAKE OUTLET
GL_76_WLO_20250514_CS
14 May 2025

U.S. ARMY CORPS OF ENGINEERS NEW ORLEANS DISTRICT			
Submitted	Surveyed By: ADAMS/CHAMPINE	Plotted By: BD	Checked By: AOJ/H
Recommended	Chief Survey Section		
Approved	Chief Waterways Maintenance Section		

Sheet
Reference
Number
76 of 191

US Army Corps of Engineers
District: CEMVN

DISCLAIMER: The United States Government furnishes these data and the recipient accepts and uses them with the express understanding that they are not to be used for any purpose other than that for which they were prepared, and that the Government makes no warranty, expressed or implied, concerning the accuracy, completeness, reliability, usability or suitability for any particular purpose of the data. The user is responsible for the results of any of the application of the data for other than its intended purpose.

Data Comments: Hydrographic survey data is subject to change and may not reflect the current conditions. The U.S. Army Corps of Engineers is not responsible for the use of the data in any activity and natural availing and coupling processes. The U.S. Army Corps of Engineers is not responsible for the use of the data in the hydrological conditions which develop after the date of publication. This data is intended for U.S. Army Corps of Engineers internal use. Prudent mariners should not rely solely upon it.

US Army Corps of Engineers
District: CEMVN