

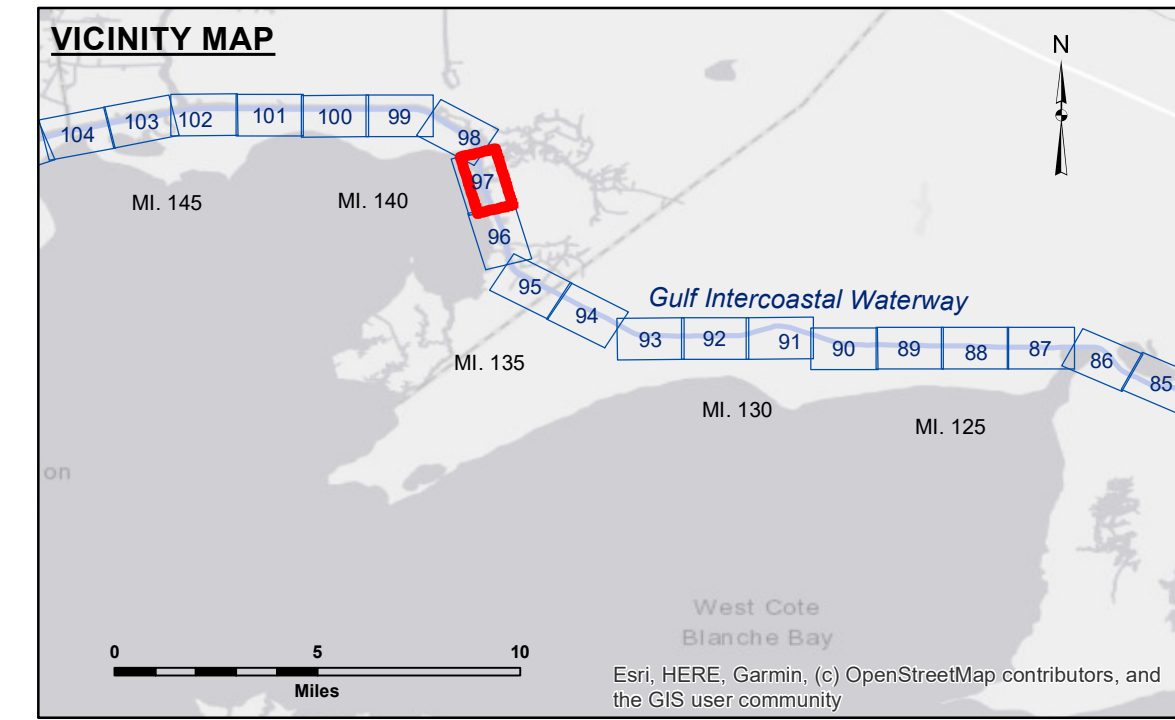
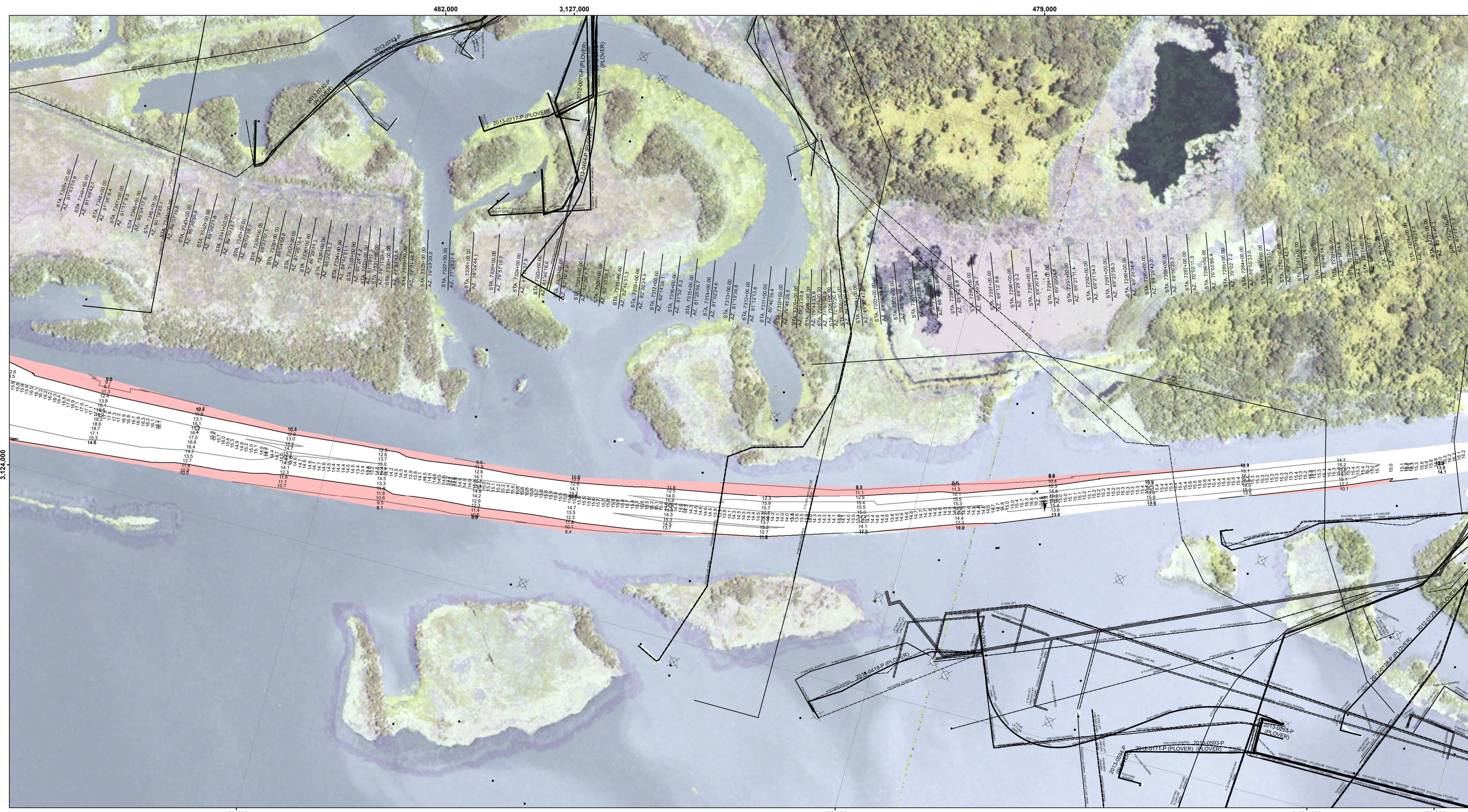


Disclaimer text regarding data accuracy and liability for the survey data.

Table with project details: U.S. ARMY CORPS OF ENGINEERS, NEW ORLEANS DISTRICT, Surveyed By: ADAMS/CHAMPINE, Plotted By: BD, Checked By: AO/JH.

GULF INTRACOASTAL WATERWAY, CHARENTON TO PETIT ANSE, GI_97_C2P_20230523_CS, 23 May 2023

Sheet Reference Number 97 of 191, Revision Number: 4.2-20200420



LEGEND section defining symbols for Federal Navigation Channel, Cable Area, Borrow Area, Shoalest Sounding, Beacons, and various buoys.

Navigation information including Gage Reading (MM 126: 3.30 MLG), Sea Conditions (0-1 FT), Vessel Name (M/V VALENTOUR), and Sounding Frequency (LOW).

NOTES section detailing the coordinate system (North American Datum of 1983), datum (Mean Low Gulf Datum), and survey data source (NAIP 1998 DOQQ imagery).