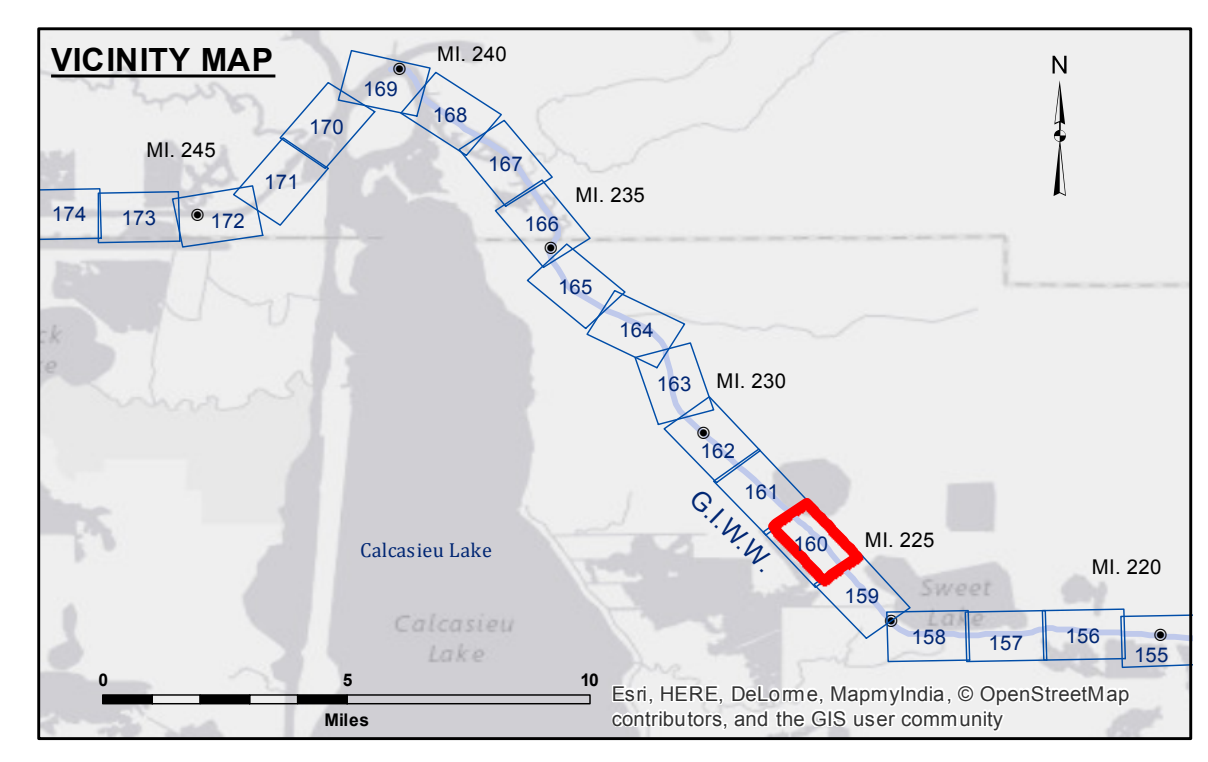


**FACT SHEET**  
 Access Conditions: The United States Government furnishes these data and the recipient accepts and uses them with the express understanding that the data are not to be used for any purpose other than that for which they were originally collected, and that the user is responsible for the results of any use of the data for any purpose other than that for which they were originally collected.  
 Distribution Liability: The data represents the results of data collection processing for a specific US Army Corps of Engineers project. The data is not to be used for any purpose other than that for which it was originally collected. The user is responsible for the results of any use of the data for any purpose other than that for which it was originally collected.  
 Data Constraints: Hydrographic survey data is subject to change rapidly due to several factors including but not limited to dredging operations, sedimentation, and other factors. The user is responsible for the results of any use of the data for any purpose other than that for which it was originally collected. The information depicted on this map represents the results of a survey conducted on the date of the survey and is not intended to represent the general condition existing at that time.

U.S. ARMY CORPS OF ENGINEERS NEW ORLEANS DISTRICT	
Submitted:	Surveyed By: SPPM
Recommended: Chief, Survey Section	Plotted By: BTD
Approved: Chief, Waterways Maintenance Section	Checked By: VLA

**GULF INTRACOASTAL WATERWAY**  
**MERMENTAU TO CALCASIEU**  
**GW\_60\_M2C\_20140529**  
**29 May 2014**



**LEGEND**

--- Federal Navigation Channel	○ Cable Area	□ Borrow Area	■ -12' and above
— Federal Navigation Center Line	□ Placement Area	● Shoalest Sounding**	□ -12' and below
— As-built Pipeline/Cable	□ Anchorage Area	★ Beacon, General	
..... Unconfirmed Pipeline/Cable	⊗ Obstruction Point	◆ Red Navigation Buoy	
— Project Depth Contour	⚓ Wrecks-Submerged	◆ Green Navigation Buoy	

**NOTES:**  
 Horizontal Coordinate System:  
 North American Datum of 1983 (NAD83), projected to the State Plane Coordinate System (SPCS), Louisiana South Zone. Distance units in U.S. Survey Feet.  
 Vertical Datum:  
 Soundings are shown in feet and indicate depths below Mean Low Gulf Datum (MLG).  
 Mile markers on the G.I.W.W. are shown in one mile intervals.  
 The location of navigation aids are based on and provided by the U.S. Coast Guard.  
 2010 Aerial Photography data source: NAIP, 1998 DOQQ imagery shown in green from USGS.  
 Reference is N.O.A. Navigation Chart No. 11348.  
 \*\* Shoalest Sounding per Quarter per Reach.  
 \*\*\* High frequency (200 kHz) survey data represents the first signal return at a sounding location and will include suspended solids, known as "fluff", if present. Low frequency (20 kHz) survey data normally penetrates through this "fluff" layer to depict elevations of consolidated bottom material. Low frequency accuracies may vary depending on channel conditions and fathometer settings.

Gage Reading: CALC LOCK EAST: 1.92 MLG  
 Sea Conditions: CALM  
 Vessel Name: M/V OB 167  
 Survey Type: CONDITION  
 Sounding Frequency\*\*\*: Low

0 500 1,000 Feet