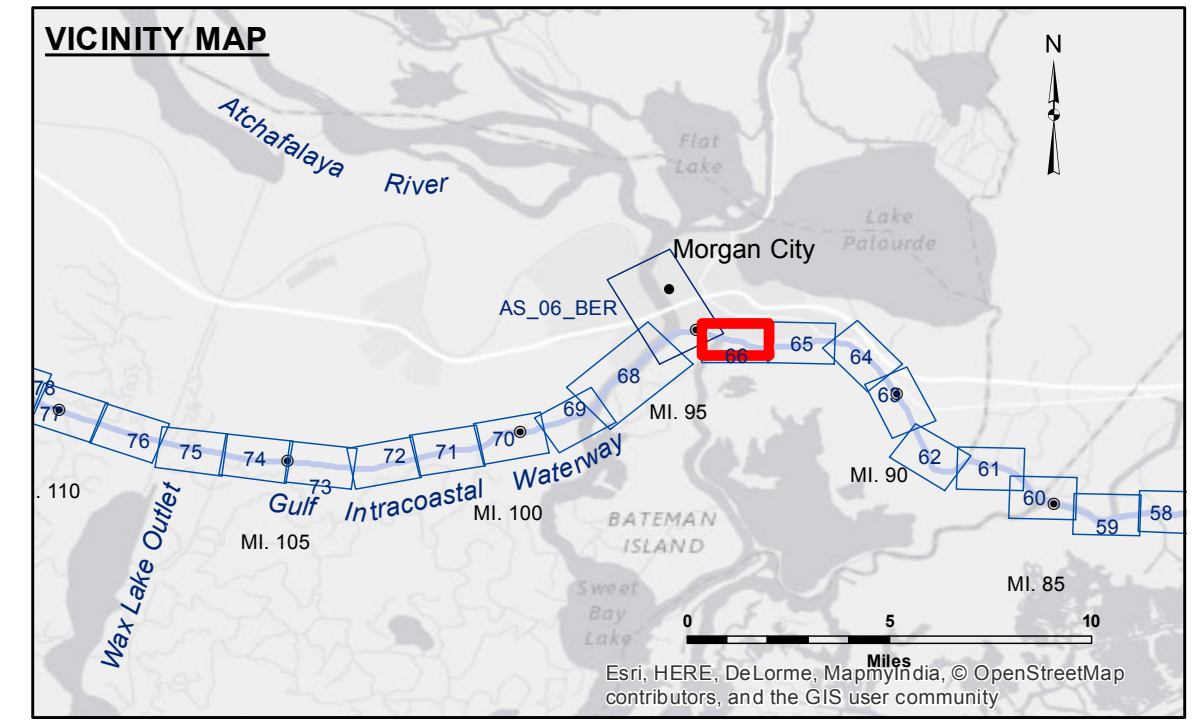


DISCLAIMER: The United States Government furnishes these data and the recipient accepts and uses them with the express understanding that the data are not to be used for any purpose other than that for which they were originally intended. The user is responsible for the accuracy, reliability, usability or suitability for any particular purpose of the data. The United States Government makes no warranty, express or implied, concerning the accuracy, completeness, reliability, usability or suitability for any particular purpose of the data. The recipient may not transfer, reproduce, or disseminate these data to others without the written consent of the United States Government. The recipient may not transfer, reproduce, or disseminate these data to others without the written consent of the United States Government. The recipient may not transfer, reproduce, or disseminate these data to others without the written consent of the United States Government. The recipient may not transfer, reproduce, or disseminate these data to others without the written consent of the United States Government.

Submitted:	Other Survey Section
Recommended:	Other Waterways Maintenance Section
Approved:	
Surveyed By:	DR, PS
Plotted By:	BTJ
Checked By:	RM



LEGEND

--- Federal Navigation Channel	○ Cable Area	□ Borrow Area	■ -12' and above
— Federal Navigation Center Line	□ Placement Area	● Shoalest Sounding**	□ -12' and below
— As-built Pipeline/Cable	□ Anchorage Area	★ Beacon, General	
..... Unconfirmed Pipeline/Cable	⊗ Obstruction Point	◆ Red Navigation Buoy	
— Project Depth Contour	⚓ Wrecks-Submerged	◆ Green Navigation Buoy	

NOTES:

Horizontal Coordinate System:
North American Datum of 1983 (NAD83), projected to the State Plane Coordinate System (SPCS), Louisiana South Zone. Distance units in U.S. Survey Feet.

Vertical Datum:
Soundings are shown in feet and indicate depths below Mean Low Gulf Datum (MLG).
Datum Relationships for Lower Atchafalaya River at Morgan City (03780) as of May 2014:
0.0' NAVD83 (2009.55) = 2.05' MLG

The location of navigation aids are based on and provided by the U.S. Coast Guard.

2010 Aerial Photography data source: NAIP, 1998 DOQQ imagery shown in green from USGS.

Reference is N.O.A.A. Navigation Chart No. 11355.

** Shoalest Sounding per Quarter per Reach.

*** High frequency (200 kHz) survey data represents the first signal return at a sounding location and will include suspended solids, known as "fluff", if present. Low frequency (20 kHz) survey data normally penetrates through this "fluff" layer to depict elevations of consolidated bottom material. Low frequency accuracies may vary depending on channel conditions and fathometer settings.

Gage Reading: MORGAN CITY: 5.70 MLG
Sea Conditions: CALM
Vessel Name: M/V OB 189
Survey Type: CONDITION
Sounding Frequency***: HIGH

Scale: 0 to 1,000 Feet

U.S. ARMY CORPS OF ENGINEERS
NEW ORLEANS DISTRICT

**GULF INTRACOASTAL WATERWAY
MORGAN CITY DOCKS EAST
GW_66_BBW_20150603
03 June 2015**

**Sheet
Reference
Number
66 of 191**

Revision Number:
3.8.0-20150202