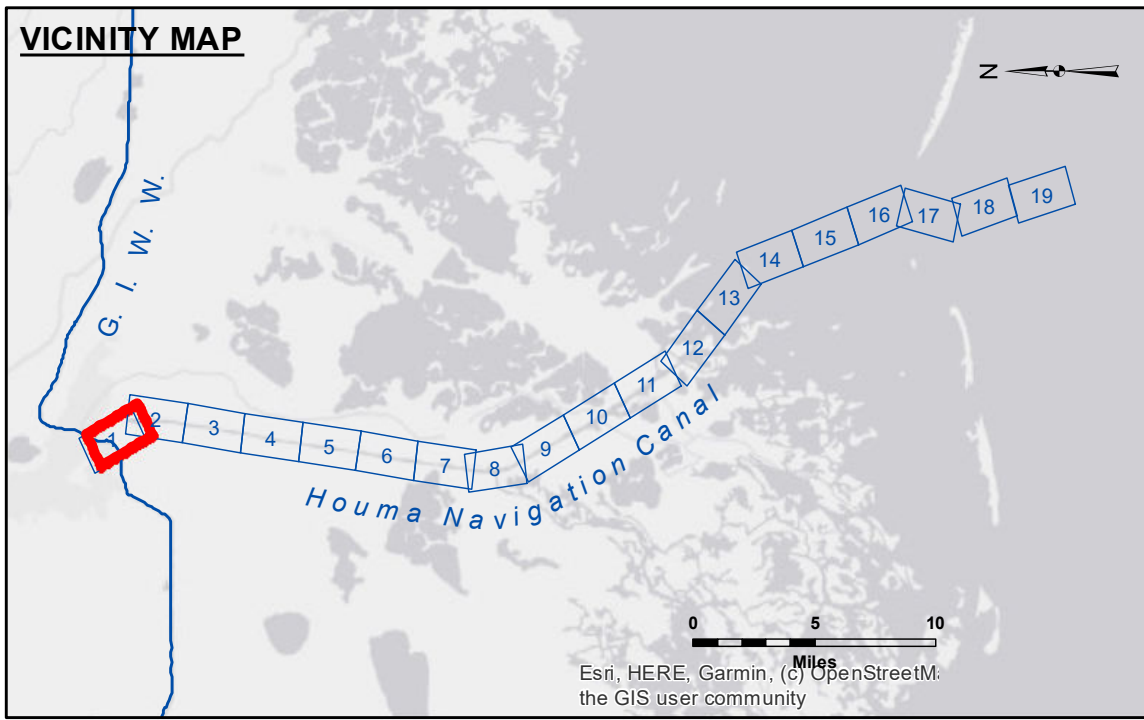


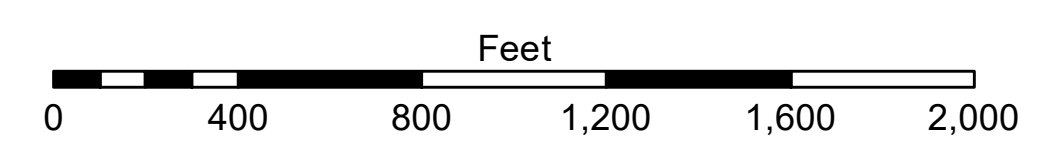
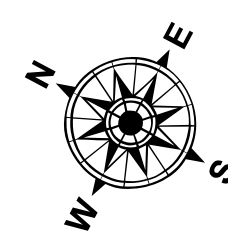
Accession: The United States Government furnishes these data and the recipient accepts and uses them with the express understanding that the data are not to be used for any purpose other than that for which they were originally prepared, and that the user is responsible for the results of any use of the data for other than its intended purpose. Application of the data for other than its intended purpose is at the user's risk. The user is responsible for the results of any use of the data for other than its intended purpose. The user is responsible for the results of any use of the data for other than its intended purpose. The user is responsible for the results of any use of the data for other than its intended purpose.

U.S. ARMY CORPS OF ENGINEERS NEW ORLEANS DISTRICT		
Submitted:	Surveyed By: DJS/SR	Plotted By: AO
Recommended:	Checked By: AO	Checked By: AO
Approved:	Chief, Waterways Maintenance Section	

**HOUMA NAVIGATION CANAL
LOWER CHANNEL
HN_01_LWR_20190910_CS
10 September 2019**



LEGEND			
--- Federal Navigation Channel	○ Cable Area	□ Borrow Area	■ -12' and above
— Federal Navigation Center Line	□ Placement Area	● Shoalest Sounding**	■ -12' to -15'
— As-built Pipeline/Cable	□ Anchorage Area	★ Beacon, General	■ -15' to -18'
..... Unconfirmed Pipeline/Cable	⊗ Obstruction Point	◆ Red Navigation Buoy	■ -18' and below
— Project Depth Contour	✶ Wrecks-Submerged	◆ Green Navigation Buoy	



Gage Reading: HOUMA AUTO: 3.46 MLG
Sea Conditions: SMOOTH
Vessel Name: OB189
Survey Type: CS
Sounding Frequency***: HIGH

NOTES:
Horizontal Coordinate System:
North American Datum of 1983 (NAD83), projected to the State Plane Coordinate System (SPCS), Louisiana South Zone. Distance units in U.S. Survey Feet.
Vertical Datum:
Soundings are shown in feet and indicate depths below Mean Low Gulf Datum (MLG).
Datum Relationships for 76320 as of August 2014:
0.0' NAVD88 (2009.55) = 2.42' MLG
Distances on the Houma Nav. Canal are shown at 1 mile intervals.
The location of navigation aids are base on and provided by the U.S. Coast Guard and USACE survey crews.
2010 Aerial Photography data source: NAIP
Reference is N.O.A.A. Navigation Chart No. 11355.
** Shoalest Sounding per Quarter per Reach.
*** High frequency (200 kHz) survey data represents the first signal return at a sounding location and will include suspended solids, known as "fluff", if present. Low frequency (20 kHz) survey data normally penetrates through this "fluff" layer to depict elevations of consolidated bottom material. Low frequency accuracies may vary depending on channel conditions and fathometer settings.

**Sheet Reference Number
1 of 19**
Revision Number:
4.0-201 90702