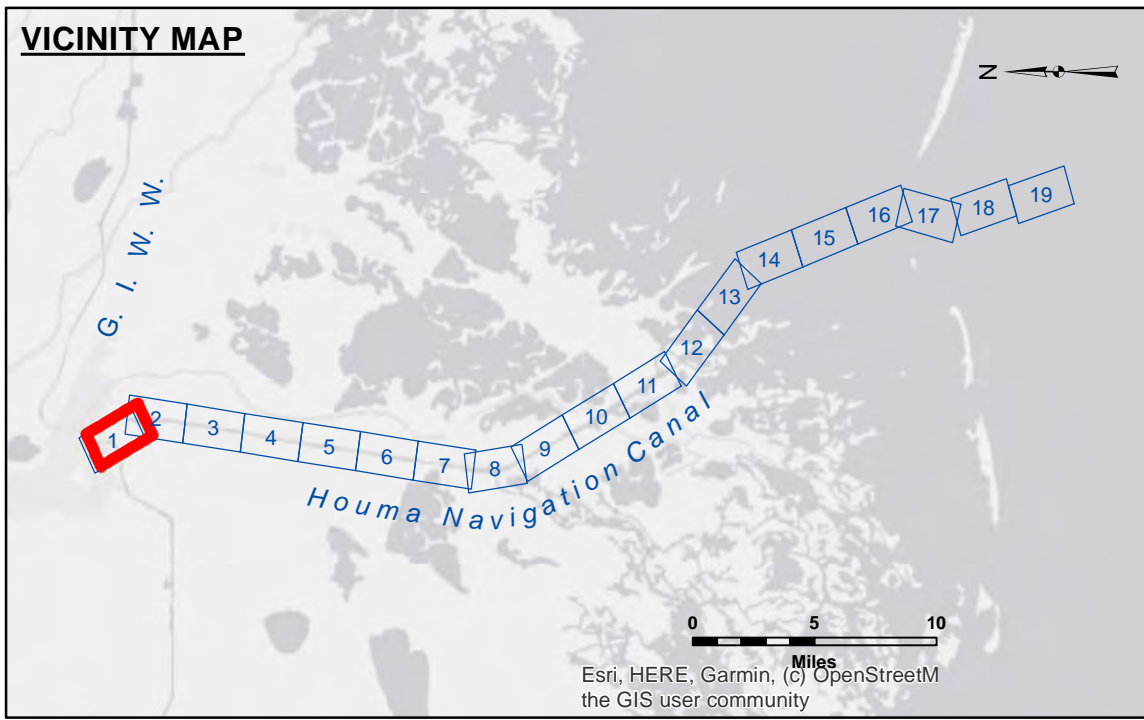


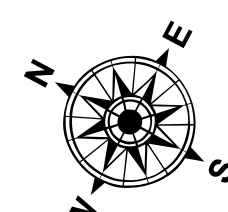
**Distribution Liability:** The data represents the results of data collection/processing for a specific US Army Corps of Engineers project. It is only valid for its intended use, content, time and accuracy. The user is responsible for the results. The user is not to be held responsible for any errors or omissions. The user is not to be held responsible for any errors or omissions. The user is not to be held responsible for any errors or omissions.

Submitted:	SP-JS
Recommended:	BD
Approved:	AOJH

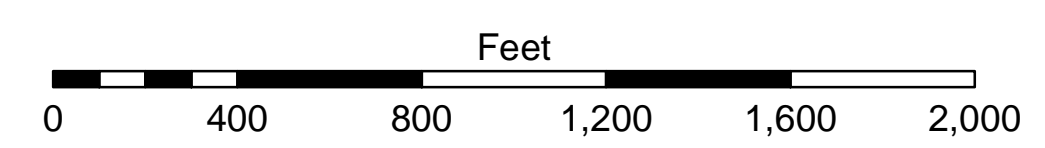
**HOUMA NAVIGATION CANAL LOWER CHANNEL**  
**HN\_01\_LWR\_20240725\_CS**  
**25 July 2024**



LEGEND	
--- Federal Navigation Channel	○ Cable Area
— Federal Navigation Center Line	□ Placement Area
— As-built Pipeline/Cable	□ Anchorage Area
..... Unconfirmed Pipeline/Cable	⊗ Obstruction Point
— Project Depth Contour	✈ Wrecks-Submerged
□ Borrow Area	★ Beacon, General
● Shoalest Sounding**	♦ Red Navigation Buoy
○ -8' and above	◇ Green Navigation Buoy
○ -8' to -10'	
○ -10' to -12'	
○ -12' to -16'	
○ -16' to -19'	
○ -19' and below	



Gage Reading: HOUMA VRN: 0.85 MLLW AVG.  
 Sea Conditions: CALM  
 Vessel Name: OB-169  
 Survey Type: CONDITION  
 Sounding Frequency\*\*\*: HIGH



**NOTES:**  
 Horizontal Coordinate System: North American Datum of 1983 (NAD83), projected to the State Plane Coordinate System (SPCS), Louisiana South Zone. Distance units in U.S. Survey Feet.  
 Vertical Datum: Soundings are shown in feet and indicate depths below Mean Lower Low Water Datum (MLLW). Datum Relationships for 76320 as of September 2022: 0.0' NAVD88 (2009.55) = 0.40' MLLW = 1.40' MLG  
 Distances on the Houma Nav. Canal are shown at 1 mile intervals.  
 The location of navigation aids are base on and provided by the U.S. Coast Guard and USACE survey crews.  
 2019 Aerial Photography data source: NAIP (1998 DOQQ Imagery in green).  
 Reference is N.O.A.A. Navigation Chart No. 11355.  
 \*\* Shoalest Sounding per Quarter per Reach.  
 \*\*\* High frequency (200 kHz) survey data represents the first signal return at a sounding location and will include suspended solids, known as "fluff", if present. Low frequency (20 kHz) survey data normally penetrates through this "fluff" layer to depict elevations of consolidated bottom material. Low frequency accuracies may vary depending on channel conditions and fathometer settings.

**Sheet Reference Number**  
**1 of 19**