

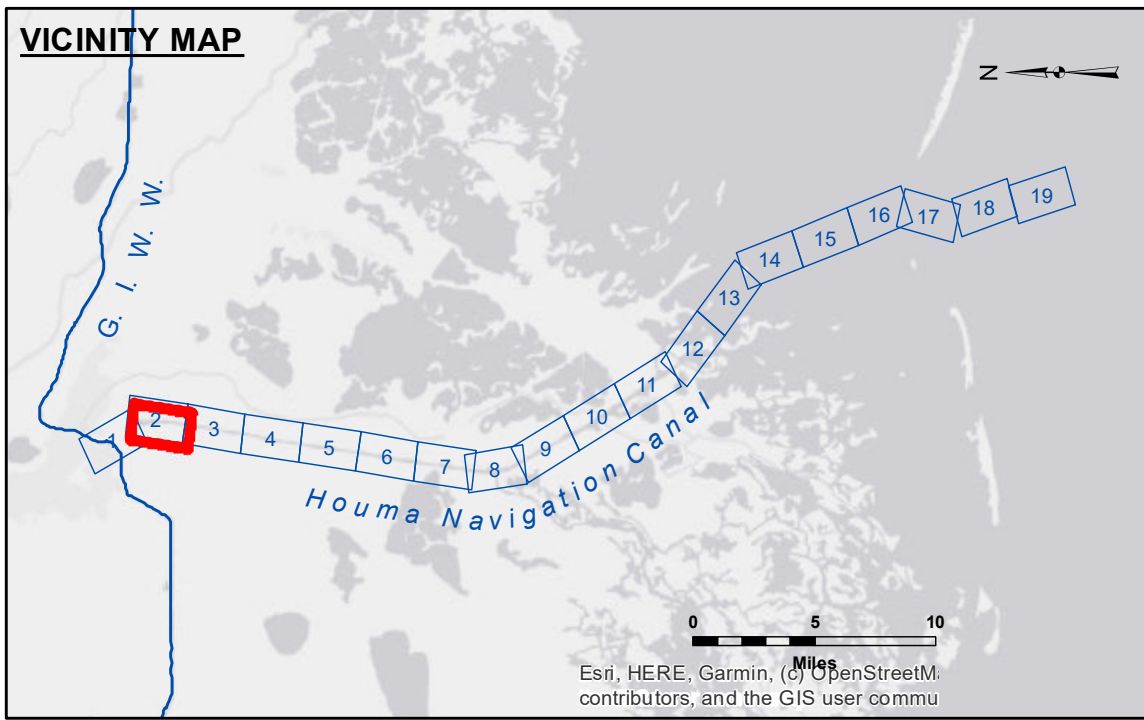
**DISTRIBUTION LIABILITY:** The data represents the results of data collection/processing for a specific US Army Corps of Engineers project. It is only valid for the intended use, control, time and accuracy specifications. The user is responsible for the results of any application of the data for other than the intended purpose.

**DATA:** Constantine Hydrographic survey data is subject to change rapidly due to several factors including but not limited to changing bathymetry, sedimentation, and other factors. The user is responsible for the accuracy of the data used in their project. The US Army Corps of Engineers accepts no responsibility for changes in the hydrographic conditions which develop after the date of the survey. The user is responsible for the accuracy of the data used in their project. The user is responsible for the accuracy of the data used in their project.

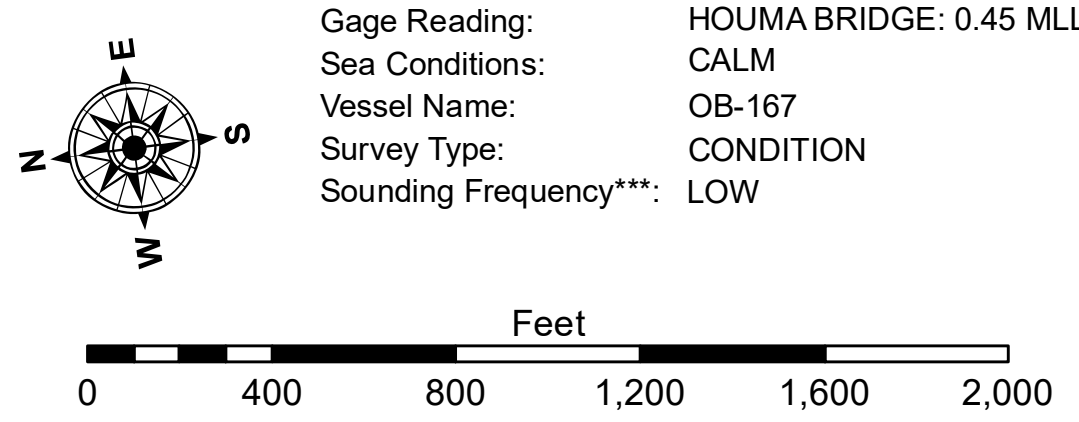
**ACCESS:** The United States Government furnishes these data and the recipient accepts and uses them with the express understanding that the data are not to be used for any purpose other than that for which they were provided, and that the recipient may not transfer these data to others without also transferring the Distribution Liability. The information depicted on this map represents the results of a survey conducted on or about the date indicated and is not to be considered to represent the general condition existing at that time.

U.S. ARMY CORPS OF ENGINEERS NEW ORLEANS DISTRICT	
Submitted:	Surveyed By: ADAMS/CHAMPINE
Recommended:	Plotted By: BD
Checked By: AD/JH	Checked By: AD/JH
Approved:	Chief, Waterways Maintenance Section

**HOUMA NAVIGATION CANAL  
LOWER CHANNEL  
HN\_02\_LWR\_20231129\_CS  
29 November 2023**



LEGEND	
--- Federal Navigation Channel	○ Cable Area
— Federal Navigation Center Line	□ Placement Area
— As-built Pipeline/Cable	□ Anchorage Area
..... Unconfirmed Pipeline/Cable	⊗ Obstruction Point
— Project Depth Contour	★ Wrecks-Submerged
□ Borrow Area	★ Beacon, General
● Shoalest Sounding**	◆ Red Navigation Buoy
○ Green Navigation Buoy	



**NOTES:**  
Horizontal Coordinate System: North American Datum of 1983 (NAD83), projected to the State Plane Coordinate System (SPCS), Louisiana South Zone. Distance units in U.S. Survey Feet.  
Vertical Datum: Soundings are shown in feet and indicate depths below Mean Lower Low Water Datum (MLLW). Datum Relationships for 76320 as of September 2022: 0.0' NAVD88 (2009.55) = 0.40' MLLW = 1.40' MLG  
Distances on the Houma Nav. Canal are shown at 1 mile intervals.  
The location of navigation aids are base on and provided by the U.S. Coast Guard and USACE survey crews.  
2019 Aerial Photography data source: NAIP (1998 DOQQ Imagery in green).  
Reference is N.O.A.A. Navigation Chart No. 11355.  
\*\* Shoalest Sounding per Quarter per Reach.  
\*\*\* High frequency (200 kHz) survey data represents the first signal return at a sounding location and will include suspended solids, known as "fluff", if present. Low frequency (20 kHz) survey data normally penetrates through this "fluff" layer to depict elevations of consolidated bottom material. Low frequency accuracies may vary depending on channel conditions and fathometer settings.

**Sheet Reference Number  
2 of 19**