

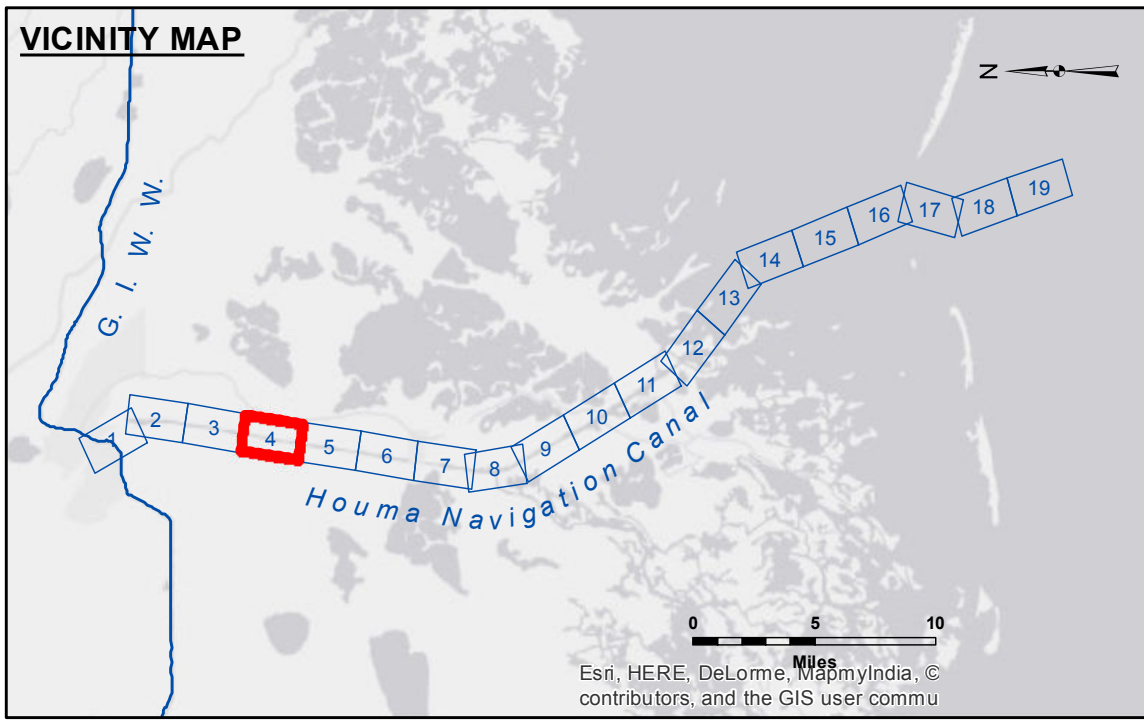
DISTRIBUTION LIABILITY: The data represents the results of data collection/processing for a specific US Army Corps of Engineers project. It is only valid for its intended use, control, time and accuracy specifications. The user is responsible for the results of any application of the data for other than its intended purpose.

DATUM CONSTRAINTS: Hydrographic survey data is subject to change rapidly due to several factors including but not limited to dredging, sedimentation, and other factors. The user is responsible for the results of any application of the data for other than its intended purpose. The information depicted on this map represents the results of a survey conducted on the date indicated and is not intended to represent the general condition existing at that time.

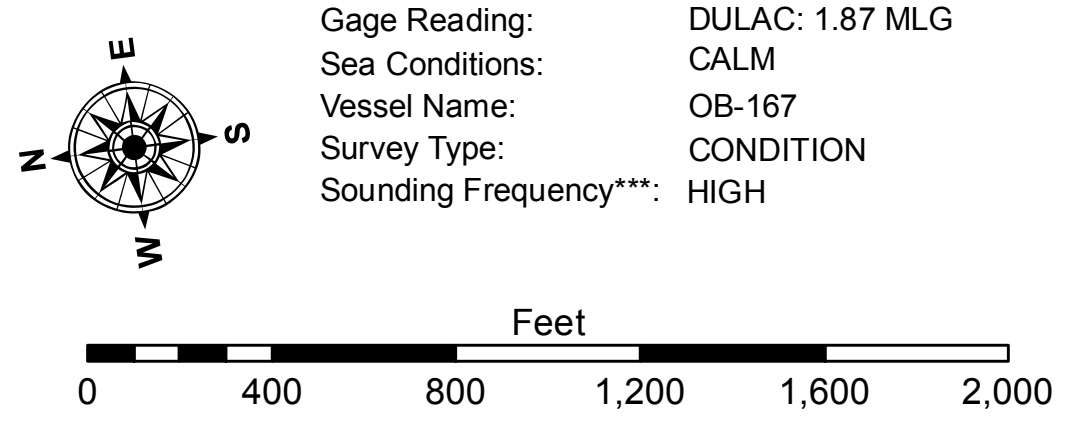
Submitted:	Surveyed By: SPS:JH
Recommended:	Plotted By: BD
Approved:	Checked By: AC

U.S. ARMY CORPS OF ENGINEERS
NEW ORLEANS DISTRICT

**HOUMA NAVIGATION CANAL
LOWER CHANNEL
HN_04_LWR_20170109
09 January 2017**



LEGEND			
--- Federal Navigation Channel	○ Cable Area	□ Borrow Area	■ -12' and above
— Federal Navigation Center Line	□ Placement Area	● Shoalest Sounding**	■ -12' to -15'
— As-built Pipeline/Cable	□ Anchorage Area	★ Beacon, General	■ -15' to -18'
..... Unconfirmed Pipeline/Cable	⊗ Obstruction Point	◆ Red Navigation Buoy	■ -18' and below
— Project Depth Contour	⚓ Wrecks-Submerged	◆ Green Navigation Buoy	



NOTES:
Horizontal Coordinate System: North American Datum of 1983 (NAD83), projected to the State Plane Coordinate System (SPCS), Louisiana South Zone. Distance units in U.S. Survey Feet.
Vertical Datum: Soundings are shown in feet and indicate depths below Mean Low Gulf Datum (MLG). Datum Relationships for 76320 as of August 2014: 0.0' NAVD88 (2009.55) = 2.42' MLG
Distances on the Houma Nav. Canal are shown at 1 mile intervals.
The location of navigation aids are base on and provided by the U.S. Coast Guard and USACE survey crews.
2010 Aerial Photography data source: NAIP
Reference is N.O.A.A. Navigation Chart No. 11355.
** Shoalest Sounding per Quarter per Reach.
*** High frequency (200 kHz) survey data represents the first signal return at a sounding location and will include suspended solids, known as "fluff", if present. Low frequency (20 kHz) survey data normally penetrates through this "fluff" layer to depict elevations of consolidated bottom material. Low frequency accuracies may vary depending on channel conditions and fathometer settings.

**Sheet Reference Number
4 of 19**

Revision Number:
3.8.9-20150202