

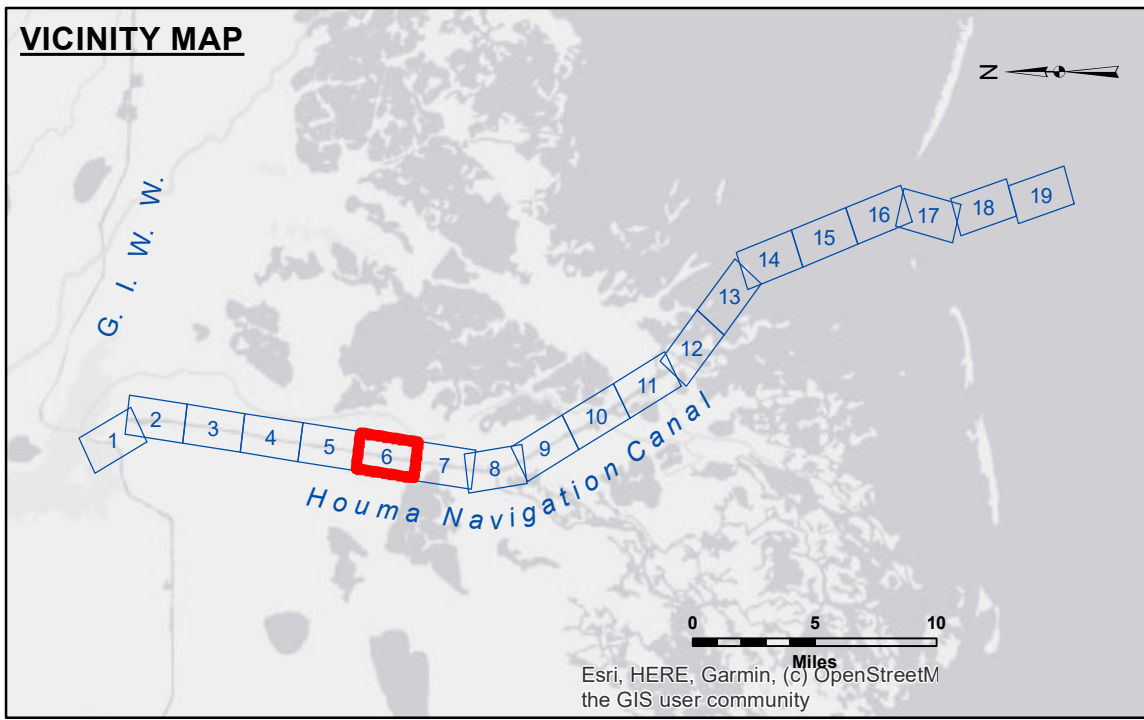
DISCLAIMER
 The information depicted on this map represents the results of a survey conducted by the U.S. Army Corps of Engineers. The data represents the results of a survey conducted for a specific purpose and is not intended for any other purpose. The user is responsible for the accuracy, completeness, and reliability of the data for their intended use. The user is responsible for the accuracy, completeness, and reliability of the data for their intended use. The user is responsible for the accuracy, completeness, and reliability of the data for their intended use. The user is responsible for the accuracy, completeness, and reliability of the data for their intended use.

ACCESS
 The United States Government furnishes these data and the recipient accepts and uses them with the express understanding that the data are not to be used for any purpose other than that for which they were originally collected. The user is responsible for the accuracy, completeness, and reliability of the data for their intended use. The user is responsible for the accuracy, completeness, and reliability of the data for their intended use. The user is responsible for the accuracy, completeness, and reliability of the data for their intended use. The user is responsible for the accuracy, completeness, and reliability of the data for their intended use.

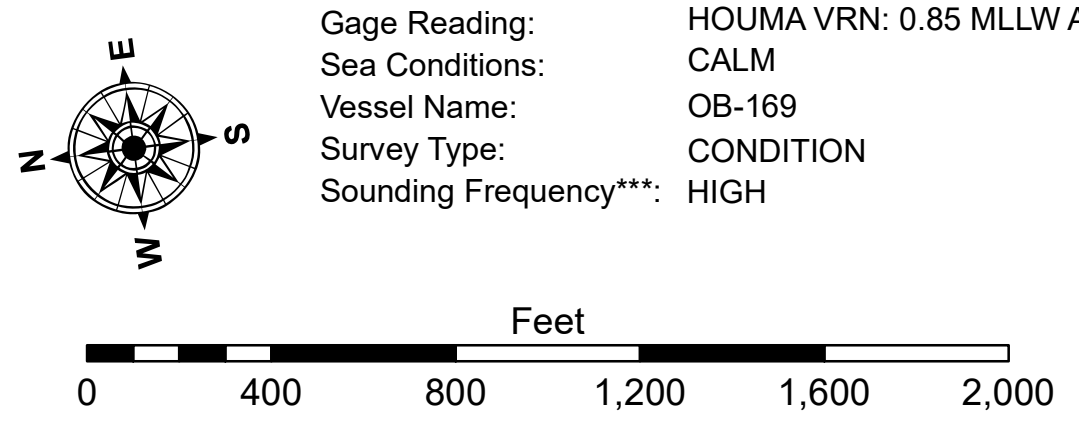
Submitted:	SP-JS	Plotted By:	BD	Checked By:	AD/JH
Recommended:	Chief, Survey Section				
Approved:	Chief, Waterways Maintenance Section				

HOUMA NAVIGATION CANAL LOWER CHANNEL
HN_06_LWR_20240725_CS
 25 July 2024

Sheet Reference Number
6 of 19



LEGEND			
--- Federal Navigation Channel	○ Cable Area	□ Borrow Area	■ -8' and above
— Federal Navigation Center Line	□ Placement Area	● Shoalest Sounding**	■ -8' to -10'
— As-built Pipeline/Cable	□ Anchorage Area	★ Beacon, General	■ -10' to -12'
..... Unconfirmed Pipeline/Cable	⊗ Obstruction Point	◆ Red Navigation Buoy	■ -12' to -16'
— Project Depth Contour	⚓ Wrecks-Submerged	◆ Green Navigation Buoy	■ -16' to -19'
			■ -19' and below



NOTES:
 Horizontal Coordinate System:
 North American Datum of 1983 (NAD83), projected to the State Plane Coordinate System (SPCS), Louisiana South Zone. Distance units in U.S. Survey Feet.
 Vertical Datum:
 Soundings are shown in feet and indicate depths below Mean Lower Low Water Datum (MLLW). Datum Relationships for 76320 as of September 2022: 0.0' NAVD88 (2009.55) = 0.40' MLLW = 1.40' MLG
 Distances on the Houma Nav. Canal are shown at 1 mile intervals.
 The location of navigation aids are base on and provided by the U.S. Coast Guard and USACE survey crews.
 2019 Aerial Photography data source: NAIP (1998 DOQQ Imagery in green).
 Reference is N.O.A.A. Navigation Chart No. 11355.
 ** Shoalest Sounding per Quarter per Reach.
 *** High frequency (200 kHz) survey data represents the first signal return at a sounding location and will include suspended solids, known as "fluff", if present. Low frequency (20 kHz) survey data normally penetrates through this "fluff" layer to depict elevations of consolidated bottom material. Low frequency accuracies may vary depending on channel conditions and fathometer settings.