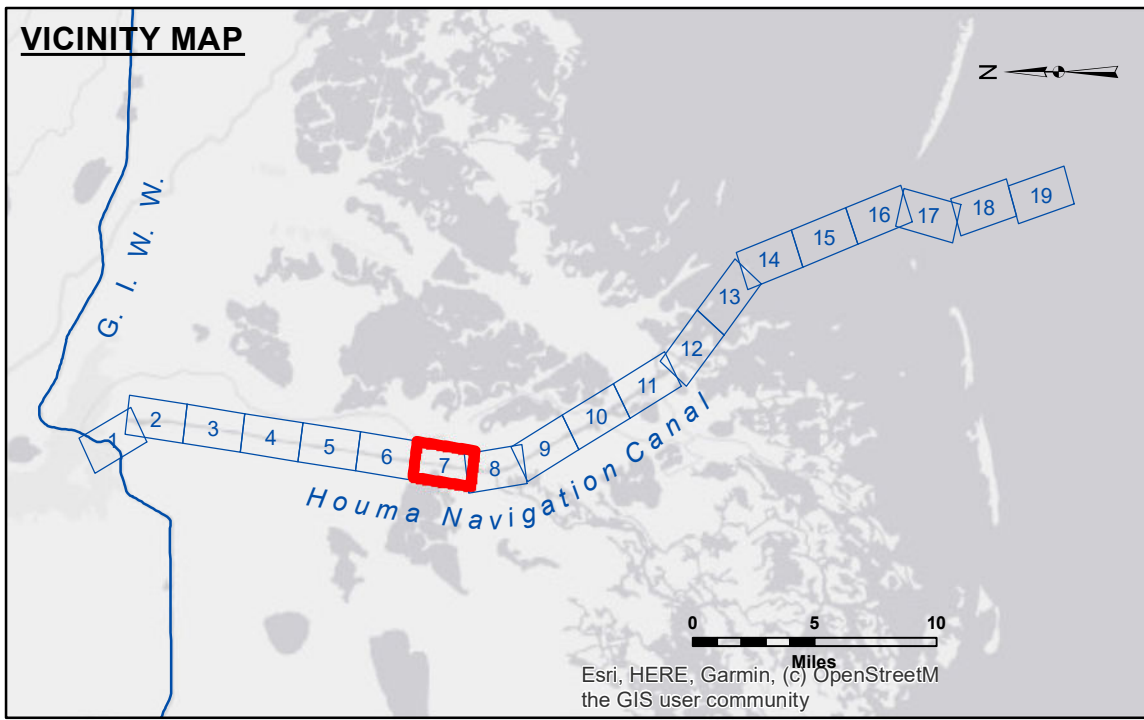


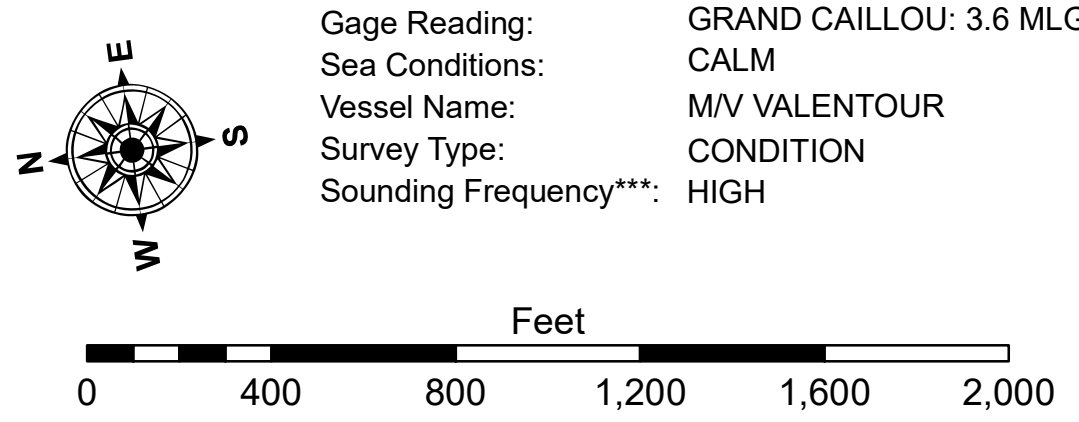
DISCLAIMER
 The United States Government furnishes these data and the recipient accepts and uses them with the express understanding that the data are not to be used for any purpose other than that for which they were originally prepared, or implied concerning the accuracy, completeness, reliability, usability or suitability for any particular purpose of the recipient. The user is responsible for the results of the use of these data. The United States Government does not warrant, represent or make any statement as to the accuracy, reliability, or completeness of the data for other than its intended purpose.
 Data Constraints: Hydrographic survey data is subject to change rapidly due to several factors including but not limited to changing hydrographic conditions, sedimentation, and other factors. The Army Corps of Engineers accepts no responsibility for changes in the hydrographic conditions which develop after the date of the survey. The information depicted on this map represents the results of a survey conducted on the date shown on the map. It is not intended to represent the general condition existing at that time.

U.S. ARMY CORPS OF ENGINEERS NEW ORLEANS DISTRICT		
Submitted:	Surveyed By: JDH/JA	Plotted By: AO
Recommended:	Chart, Survey Section	Checked By: AO
Approved:	Chart, Waterways Maintenance Section	



LEGEND

--- Federal Navigation Channel	○ Cable Area	□ Borrow Area	■ -12' and above
— Federal Navigation Center Line	□ Placement Area	● Shoalest Sounding**	■ -12' to -15'
— As-built Pipeline/Cable	□ Anchorage Area	★ Beacon, General	■ -15' to -18'
..... Unconfirmed Pipeline/Cable	⊗ Obstruction Point	◆ Red Navigation Buoy	■ -18' and below
— Project Depth Contour	⚓ Wrecks-Submerged	◆ Green Navigation Buoy	



NOTES:
 Horizontal Coordinate System:
 North American Datum of 1983 (NAD83), projected to the State Plane Coordinate System (SPCS), Louisiana South Zone. Distances in U.S. Survey Feet.
 Vertical Datum:
 Soundings are shown in feet and indicate depths below Mean Low Gulf Datum (MLG).
 Datum Relationships for 78320 as of August 2014:
 0.0' NAVD88 (2009.55) = 2.42' MLG
 Distances on the Houma Nav. Canal are shown at 1 mile intervals.
 The location of navigation aids are base on and provided by the U.S. Coast Guard and USACE survey crews.
 2010 Aerial Photography data source: NAIP
 Reference is N.O.A. Navigation Chart No. 11355.
 ** Shoalest Sounding per Quarter per Reach.
 *** High frequency (200 kHz) survey data represents the first signal return at a sounding location and will include suspended solids, known as "fluff", if present. Low frequency (20 kHz) survey data normally penetrates through this "fluff" layer to depict elevations of consolidated bottom material. Low frequency accuracies may vary depending on channel conditions and fathometer settings.

**HOUMA NAVIGATION CANAL
 LOWER CHANNEL
 HN_07_LWR_20201029_CS_POSTSTORM
 29 October 2020**

**Sheet Reference Number
 7 of 19**