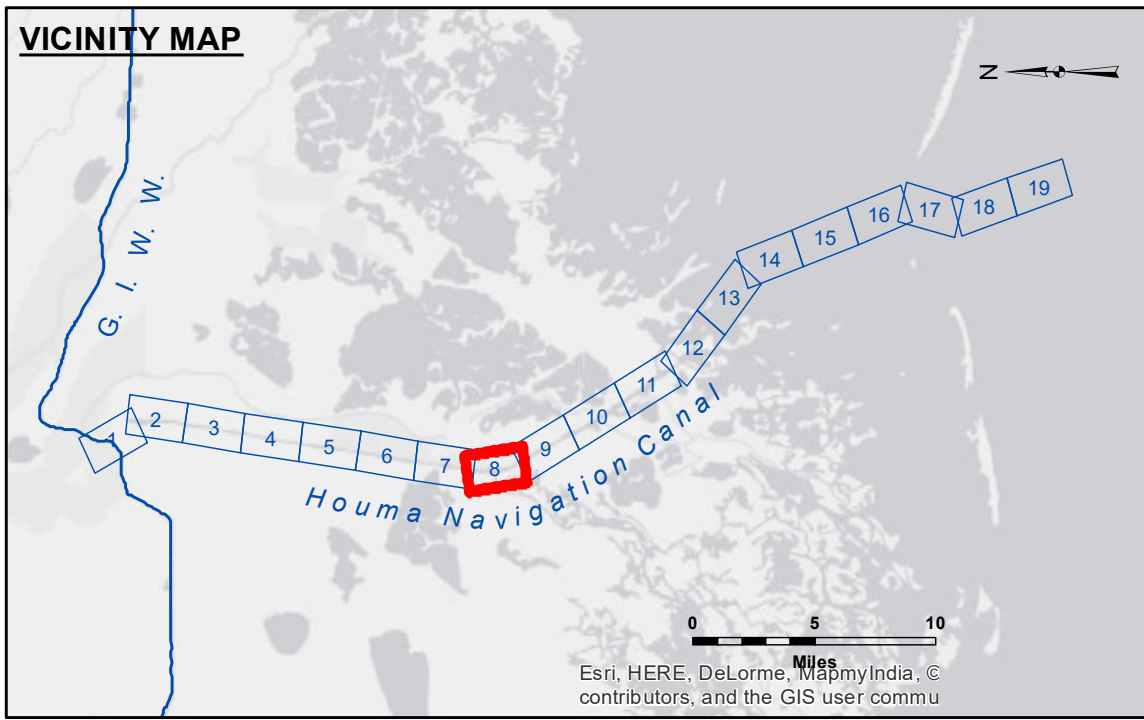


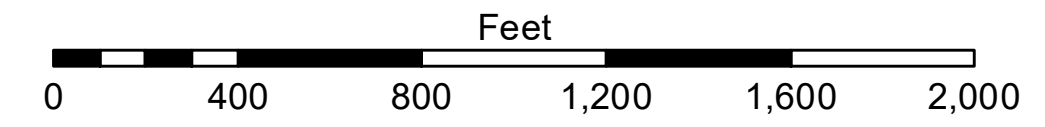
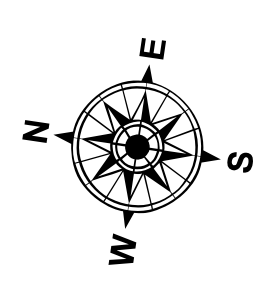
DISCLAIMER: The United States Government furnishes these data and the recipient accepts and uses them with the express understanding that the data are not to be used for any purpose other than that for which they were prepared, or to imply or substantiate any particular purpose of the recipient. The user is responsible for the accuracy, completeness, and reliability of the data. The user is responsible for the results of any use of the data. The user is responsible for the results of any use of the data. The user is responsible for the results of any use of the data. The user is responsible for the results of any use of the data.

U.S. ARMY CORPS OF ENGINEERS NEW ORLEANS DISTRICT		
Submitted:	Surveyed By: SPPM	Plotted By: MS
Recommended:	Chief Survey Section	Checked By: MS
Approved:	Chief Waterways Maintenance Section	

**HOUMA NAVIGATION CANAL
LOWER CHANNEL
HN_08_LWR_20171129_CS
29 November 2017**



LEGEND			
--- Federal Navigation Channel	○ Cable Area	□ Borrow Area	■ -12' and above
— Federal Navigation Center Line	□ Placement Area	● Shoalest Sounding**	■ -12' to -15'
— As-built Pipeline/Cable	□ Anchorage Area	★ Beacon, General	■ -15' to -18'
..... Unconfirmed Pipeline/Cable	⊗ Obstruction Point	◆ Red Navigation Buoy	■ -18' and below
— Project Depth Contour	⚓ Wrecks-Submerged	◆ Green Navigation Buoy	



Gage Reading: COCODRIE: 2.39 MLG
 Sea Conditions: CALM
 Vessel Name: OB-167
 Survey Type: CONDITION
 Sounding Frequency***: LOW

NOTES:
 Horizontal Coordinate System:
 North American Datum of 1983 (NAD83), projected to the State Plane
 Coordinate System (SPCS), Louisiana South Zone. Distance units in U.S. Survey Feet.
 Vertical Datum:
 Soundings are shown in feet and indicate depths below Mean Low Gulf Datum (MLG).
 Datum Relationships for 76305 as of August 2014:
 0.0' NAVD88 (OPUS 2010) = 0.42' MLLW (2007-2011) = 1.34' MLG
 Distances on the Houma Nav. Canal are shown at 1 mile intervals.
 The location of navigation aids are base on and provided by the U.S. Coast Guard
 and USACE survey crews.
 2010 Aerial Photography data source: NAIP
 Reference is N.O.A.A. Navigation Chart No. 11355.
 ** Shoalest Sounding per Quarter per Reach.
 *** High frequency (200 kHz) survey data represents the first signal return at a sounding
 location and will include suspended solids, known as "fluff", if present. Low frequency (20 kHz)
 survey data normally penetrates through this "fluff" layer to depict elevations of consolidated bottom
 material. Low frequency accuracies may vary depending on channel conditions and bathymeter
 settings.

**Sheet
Reference
Number
8 of 19**