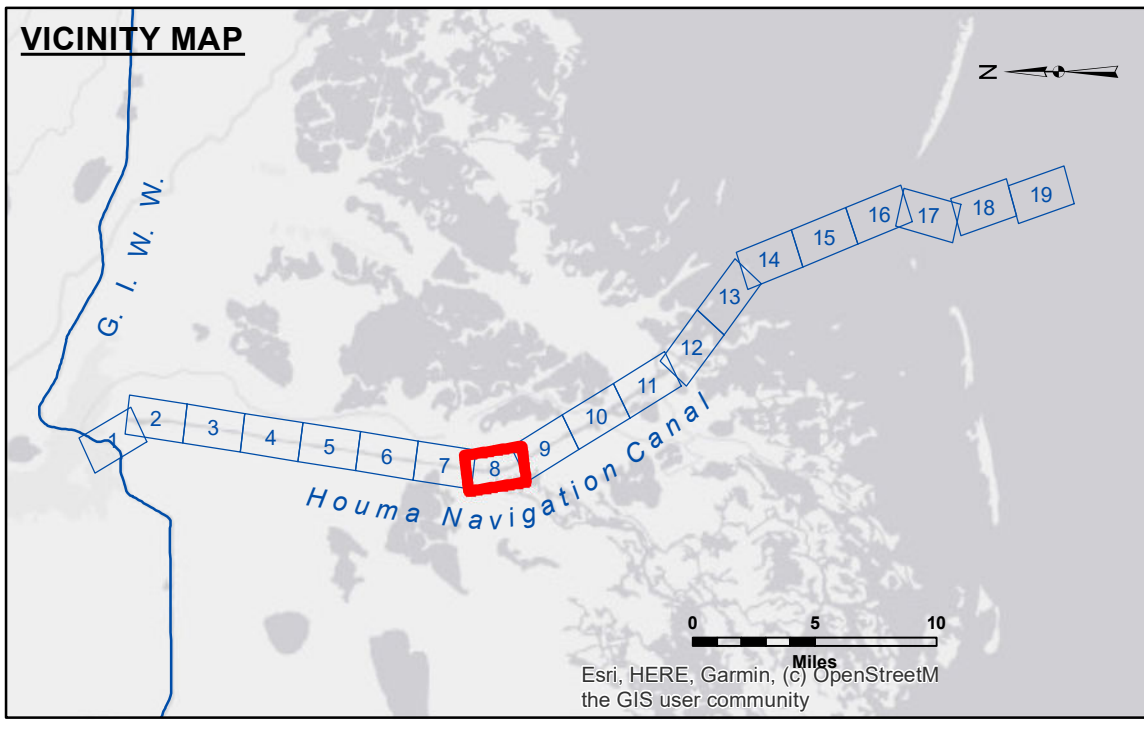


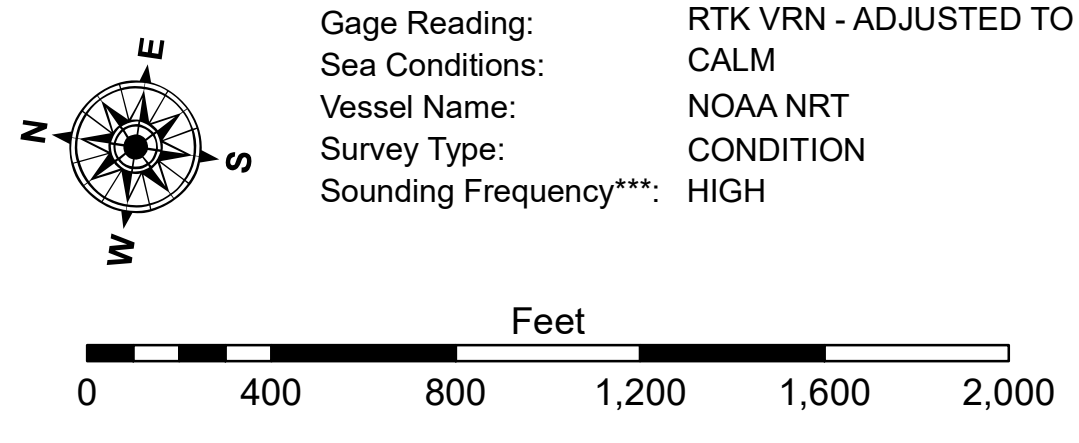
**DISCLAIMER:** The United States Government furnishes these data and the recipient accepts and uses them with the express understanding that the data are not to be used for any purpose other than that for which they were originally prepared, and that the user is responsible for the accuracy, completeness, and reliability of the data for any other use. The user is responsible for the accuracy, completeness, and reliability of the data for any other use. The user is responsible for the accuracy, completeness, and reliability of the data for any other use. The user is responsible for the accuracy, completeness, and reliability of the data for any other use.

U.S. ARMY CORPS OF ENGINEERS NEW ORLEANS DISTRICT	
Submitted:	NOAA NRT
Recommended:	CH2M Survey Section
Approved:	CH2M Waterways Maintenance Section
Surveyed By:	NOAA NRT
Plotted By:	JH
Checked By:	JH

**HOUMA NAVIGATION CANAL  
LOWER CHANNEL  
HN\_08\_LWR\_20240914\_CS\_POSTSTORM\_3X3  
14 September 2024**



LEGEND	
--- Federal Navigation Channel	● Cable Area
— Federal Navigation Center Line	□ Placement Area
— As-built Pipeline/Cable	□ Anchorage Area
..... Unconfirmed Pipeline/Cable	⊗ Obstruction Point
— Project Depth Contour	✶ Wrecks-Submerged
□ Borrow Area	★ Beacon, General
● Shoalest Sounding**	◆ Red Navigation Buoy
★ Beacon, General	◆ Green Navigation Buoy
◆ Red Navigation Buoy	
◆ Green Navigation Buoy	



**NOTES:**  
Horizontal Coordinate System:  
North American Datum of 1983 (NAD83), projected to the State Plane Coordinate System (SPCS), Louisiana South Zone. Distance units in U.S. Survey Feet.  
Vertical Datum:  
Soundings are shown in feet and indicate depths below Mean Lower Low Water Datum (MLLW). Datum Relationships for 76305 as of September 2022:  
0.0' NAVD88 (OPUS 2019) = 0.40' MLLW = 1.40' MLG  
Distances on the Houma Nav. Canal are shown at 1 mile intervals.  
The location of navigation aids are base on and provided by the U.S. Coast Guard and USACE survey crews.  
2019 Aerial Photography data source: NAIP (1998 DOQQ Imagery in green)  
Reference is N.O.A. Navigation Chart No. 11355.  
\*\* Shoalest Sounding per Quarter per Reach.  
\*\*\* High frequency (200 kHz) survey data represents the first signal return at a sounding location and will include suspended solids, known as "fluff", if present. Low frequency (20 kHz) survey data normally penetrates through this "fluff" layer to depict elevations of consolidated bottom material. Low frequency accuracies may vary depending on channel conditions and bathymeter settings.

**Sheet Reference Number  
8 of 19**