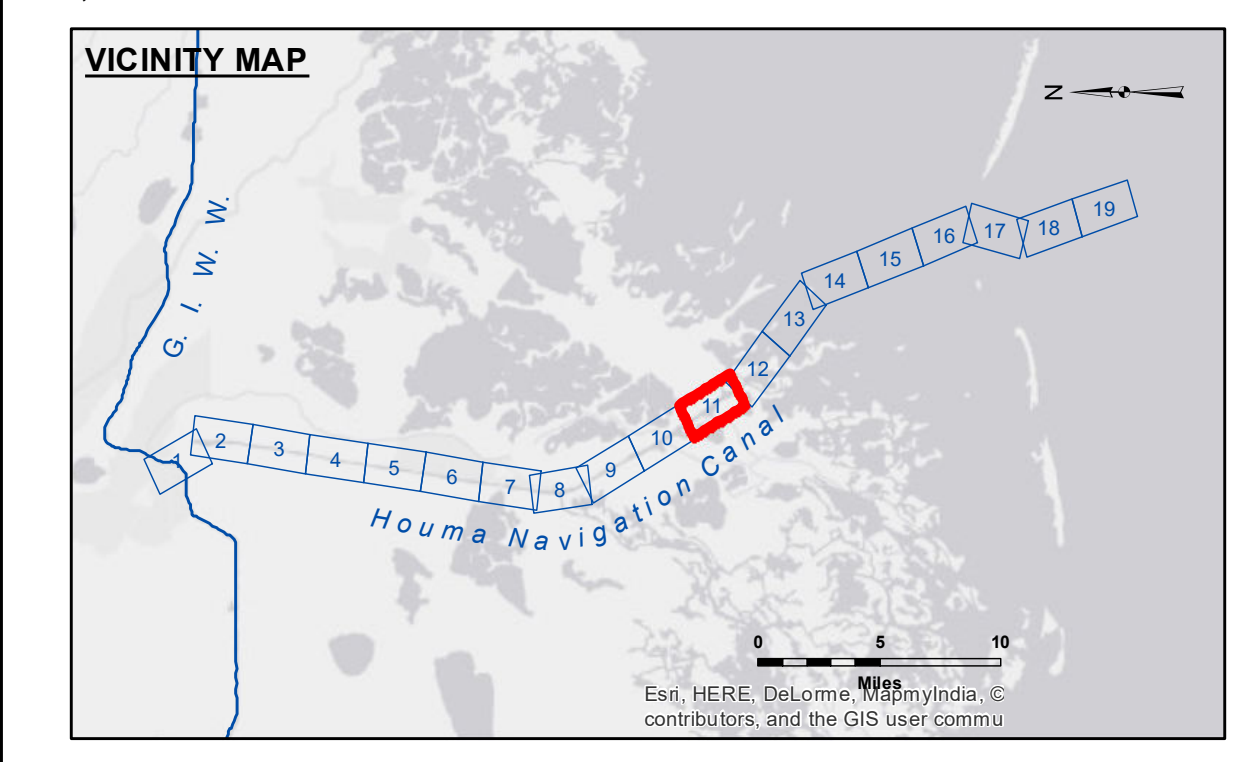


Access/Restrictions: The United States Government furnishes these data and the recipient accepts and uses them with the express understanding that they are for informational purposes only. The user is responsible for the accuracy, completeness, reliability, usability, or suitability for any particular purpose of the information provided. The user shall not be held liable for any use of the information provided under no liability whatsoever to any person by reason of any use made in reliance on the information provided. The user shall not be held liable for any use of the information provided in reliance on the information provided. The user shall not be held liable for any use of the information provided in reliance on the information provided.

Submitted:	Surveyed By: SPPM	Plotted By: BD	Checked By: MS
Recommended:	Chief, Survey Section		
Approved:	Chief, Waterways Maintenance Section		

HOUMA NAVIGATION CANAL LOWER CHANNEL HN\_11\_LWR\_20171220\_CS 20 December 2017

Sheet Reference Number 11 of 19



**LEGEND**

--- Federal Navigation Channel	○ Cable Area	■ Borrow Area	■ -12' and above
— Federal Navigation Center Line	□ Placement Area	● Shoalest Sounding**	■ -12' to -15'
— As-built Pipeline/Cable	⊗ Anchorage Area	★ Beacon, General	■ -15' to -18'
..... Unconfirmed Pipeline/Cable	⊗ Obstruction Point	◆ Red Navigation Buoy	■ -18' and below
— Project Depth Contour	✈ Wrecks-Submerged	◆ Green Navigation Buoy	

Gage Reading: COCODRIE: 0.92 MLG  
 Sea Conditions: CALM  
 Vessel Name: OB-167  
 Survey Type: CONDITION  
 Sounding Frequency\*\*\*: LOW

Vertical Datum: Soundings are shown in feet and indicate depths below Mean Low Gulf Datum (MLG). Datum Relationships for 76305 as of August 2014: 0.0' NAVD88 (OPUS 2010) = 0.42' MLLW (2007-2011) = 1.34' MLG

Distances on the Houma Nav. Canal are shown at 1 mile intervals.

The location of navigation aids are base on and provided by the U.S. Coast Guard and USACE survey crews.

2015 Aerial Photography data source: NAIP

Reference is N.O.A.A. Navigation Chart No. 11355.

\*\* Shoalest Sounding per Quarter per Reach.

\*\*\* High frequency (200 kHz) survey data represents the first signal return at a sounding location and will include suspended solids, known as "fluff", if present. Low frequency (20 kHz) survey data normally penetrates through this "fluff" layer to depict elevations of consolidated bottom material. Low frequency accuracies may vary depending on channel conditions and fathometer settings.

NOTES: Horizontal Coordinate System: North American Datum of 1983 (NAD83), projected to the State Plane Coordinate System (SPCS), Louisiana South Zone. Distance units in U.S. Survey Feet.