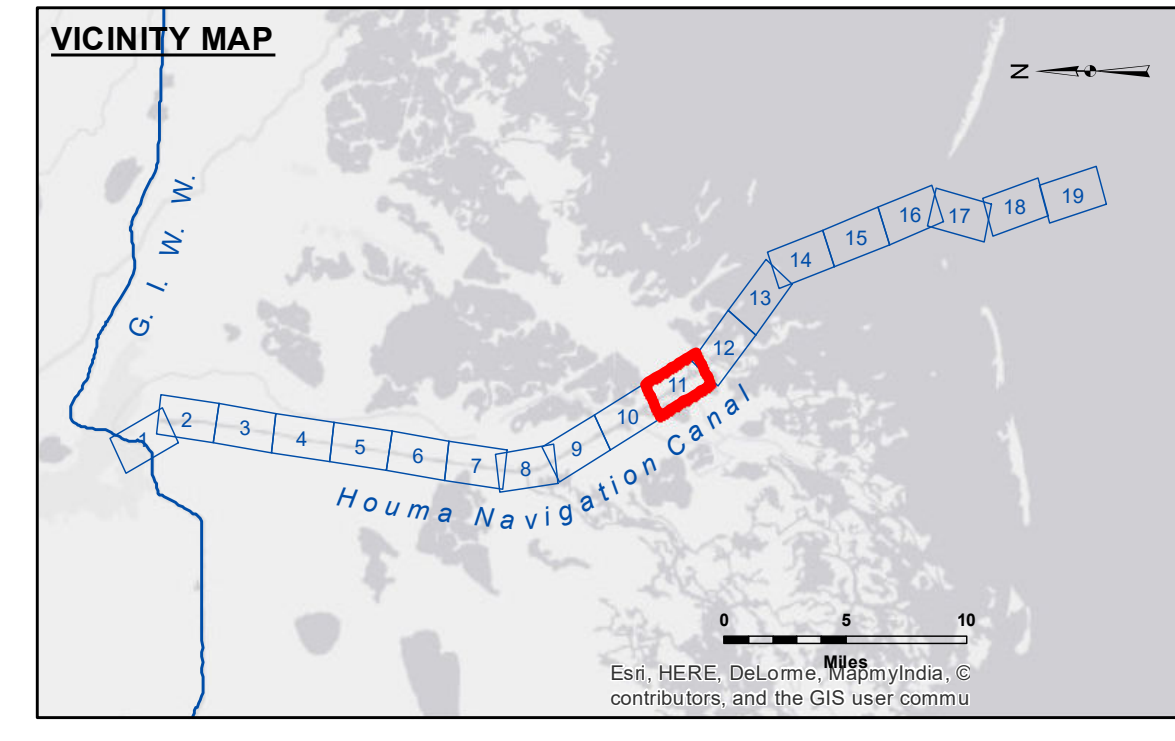
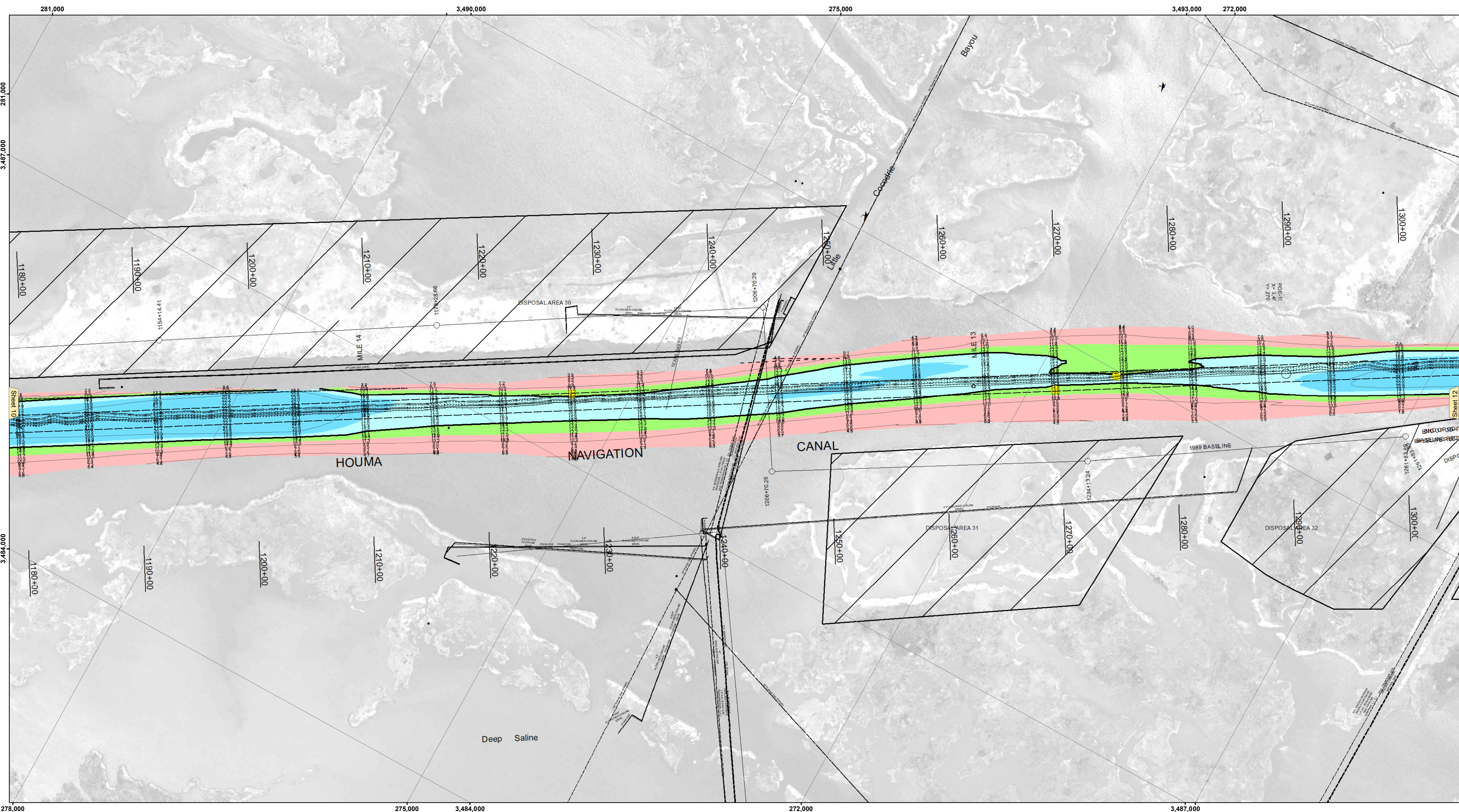




Access and Distribution: The United States Government furnishes these data and the recipient accepts and uses them with the express understanding that they are for official use only and are not to be distributed, reproduced, or copied for any purpose other than that for which they were prepared. The user is responsible for the results of any use of these data for any purpose other than that for which they were prepared. No liability whatsoever is assumed by the United States Government for any use of these data for any purpose other than that for which they were prepared. The recipient may not transfer these data to others without also transferring this Disclaimer. The information depicted on this map represents the results of a survey conducted in accordance with the standards and specifications of the Army Corps of Engineers and is not to be used for any purpose other than that for which it was prepared. Product maintainers should not rely solely upon it.

U.S. ARMY CORPS OF ENGINEERS NEW ORLEANS DISTRICT		
Submitted:	Surveyed By: RYLAND/SOUKI	Plotted By: BD
Recommended:	Chart Survey Section	Checked By: AC
Approved:	Chief, Waterways Maintenance Section	



LEGEND			
--- Federal Navigation Channel	○ Cable Area	□ Borrow Area	■ -12' and above
— Federal Navigation Center Line	□ Placement Area	● Shoalest Sounding**	■ -12' to -15'
— As-built Pipeline/Cable	□ Anchorage Area	★ Beacon, General	■ -15' to -18'
..... Unconfirmed Pipeline/Cable	⊗ Obstruction Point	◆ Red Navigation Buoy	■ -18' and below
— Project Depth Contour	✈ Wrecks-Submerged	◆ Green Navigation Buoy	

Gage Reading: PETIT CAILLOU: 1.53 MLG
 Sea Conditions: 1-2FT
 Vessel Name: OB-189
 Survey Type: CONDITION
 Sounding Frequency***: HIGH

NOTES:
 Horizontal Coordinate System:
 North American Datum of 1983 (NAD83), projected to the State Plane Coordinate System (SPCS), Louisiana South Zone. Distance units in U.S. Survey Feet.
 Vertical Datum:
 Soundings are shown in feet and indicate depths below Mean Low Gulf Datum (MLG).
 Datum Relationships for 76305 as of August 2014:
 0.0' NAVD88 (OPUS 2010) = 0.42' MLLW (2007-2011) = 1.34' MLG
 Distances on the Houma Nav. Canal are shown at 1 mile intervals.
 The location of navigation aids are base on and provided by the U.S. Coast Guard and USACE survey crews.
 2015 Aerial Photography data source: NAIP
 Reference is N.O.A.A. Navigation Chart No. 11355.
 ** Shoalest Sounding per Quarter per Reach.
 *** High frequency (200 kHz) survey data represents the first signal return at a sounding location and will include suspended solids, known as "fluff", if present. Low frequency (20 kHz) survey data normally penetrates through this "fluff" layer to depict elevations of consolidated bottom material. Low frequency accuracies may vary depending on channel conditions and fathometer settings.

**HOUMA NAVIGATION CANAL
 LOWER CHANNEL
 HN_11_LWR_20190116_CS
 16 January 2019**

**Sheet Reference Number
 11 of 19**