

Accession: The United States Government furnishes these data and the recipient accepts and uses them with the express understanding that the data are not to be used for any purpose other than that for which they were originally prepared, and that the user is responsible for the results of any use of the data for other than its intended purpose.

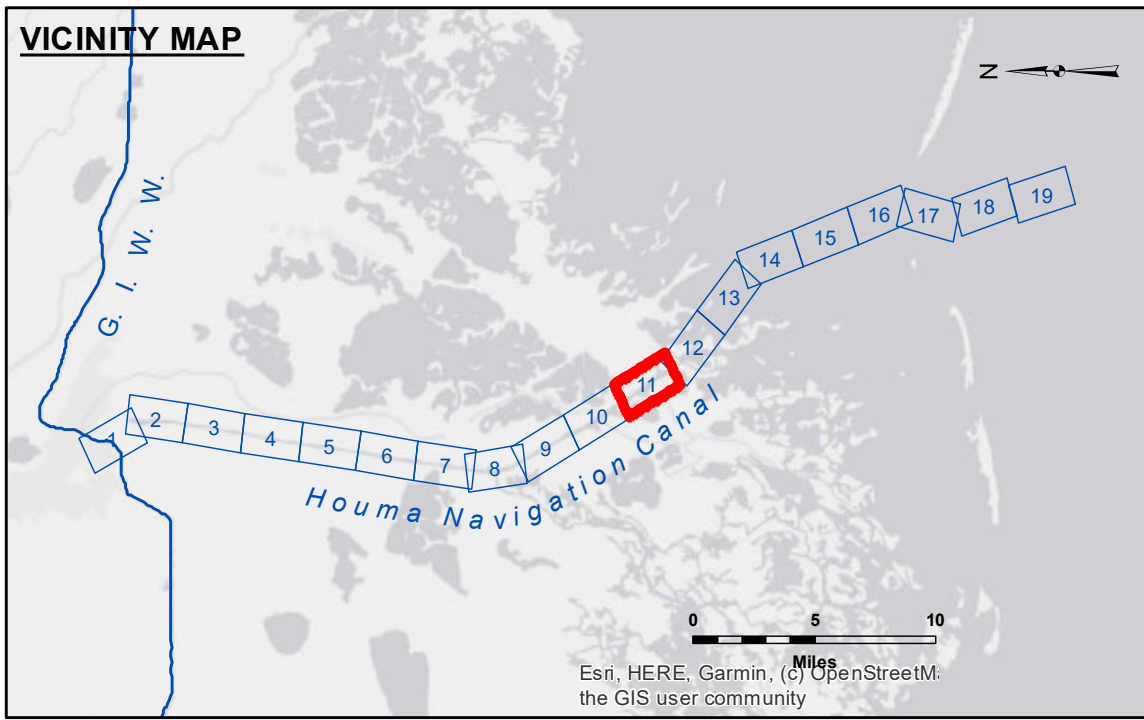
Disclaimer: The data are not to be used for any purpose other than that for which they were originally prepared, and that the user is responsible for the results of any use of the data for other than its intended purpose.

Liability: The data represent the results of data collection for a specific US Army Corps of Engineers project and are not to be used for any other purpose. The user is responsible for the results of any use of the data for other than its intended purpose.

POE-16-1289+79.60
 X = 3,480,688.73
 Y = 270,112.53

| | | |
|--------------------------------------|--------------|-------------|
| Submitted: | Surveyed By: | Checked By: |
| Recommended: | Plotted By: | AC |
| Chief, Survey Section | BD | |
| Chief, Waterways Maintenance Section | | |

**HOUMA NAVIGATION CANAL
 LOWER CHANNEL
 HN_11_LWR_20191105_CS
 05 November 2019**



LEGEND

| | | | |
|----------------------------------|---------------------|-------------------------|------------------|
| --- Federal Navigation Channel | ○ Cable Area | □ Borrow Area | ■ -12' and above |
| — Federal Navigation Center Line | □ Placement Area | ● Shoalest Sounding** | ■ -12' to -15' |
| — As-built Pipeline/Cable | □ Anchorage Area | ★ Beacon, General | ■ -15' to -18' |
| Unconfirmed Pipeline/Cable | ⊗ Obstruction Point | ◆ Red Navigation Buoy | ■ -18' and below |
| — Project Depth Contour | ✈ Wrecks-Submerged | ◆ Green Navigation Buoy | |

Gage Reading: COCODRIE: 1.85 MLG AVG.
 Sea Conditions: CALM
 Vessel Name: OB-169
 Survey Type: CONDITION
 Sounding Frequency***: LOW

NOTES:
 Horizontal Coordinate System: North American Datum of 1983 (NAD83), projected to the State Plane Coordinate System (SPCS), Louisiana South Zone. Distance units in U.S. Survey Feet.
 Vertical Datum: Soundings are shown in feet and indicate depths below Mean Low Gulf Datum (MLG). Datum Relationships for 76305 as of August 2014: 0.0' NAVD88 (OPUS 2010) = 0.42' MLLW (2007-2011) = 1.34' MLG
 Distances on the Houma Nav. Canal are shown at 1 mile intervals.
 The location of navigation aids are base on and provided by the U.S. Coast Guard and USACE survey crews.
 2015 Aerial Photography data source: NAIP
 Reference is N.O.A. Navigation Chart No. 11355.
 ** Shoalest Sounding per Quarter per Reach.
 *** High frequency (200 kHz) survey data represents the first signal return at a sounding location and will include suspended solids, known as "fluff", if present. Low frequency (20 kHz) survey data normally penetrates through this "fluff" layer to depict elevations of consolidated bottom material. Low frequency accuracies may vary depending on channel conditions and fathometer settings.

**Sheet Reference Number
 11 of 19**

Revision Number:
 4-0-201 9/7/02