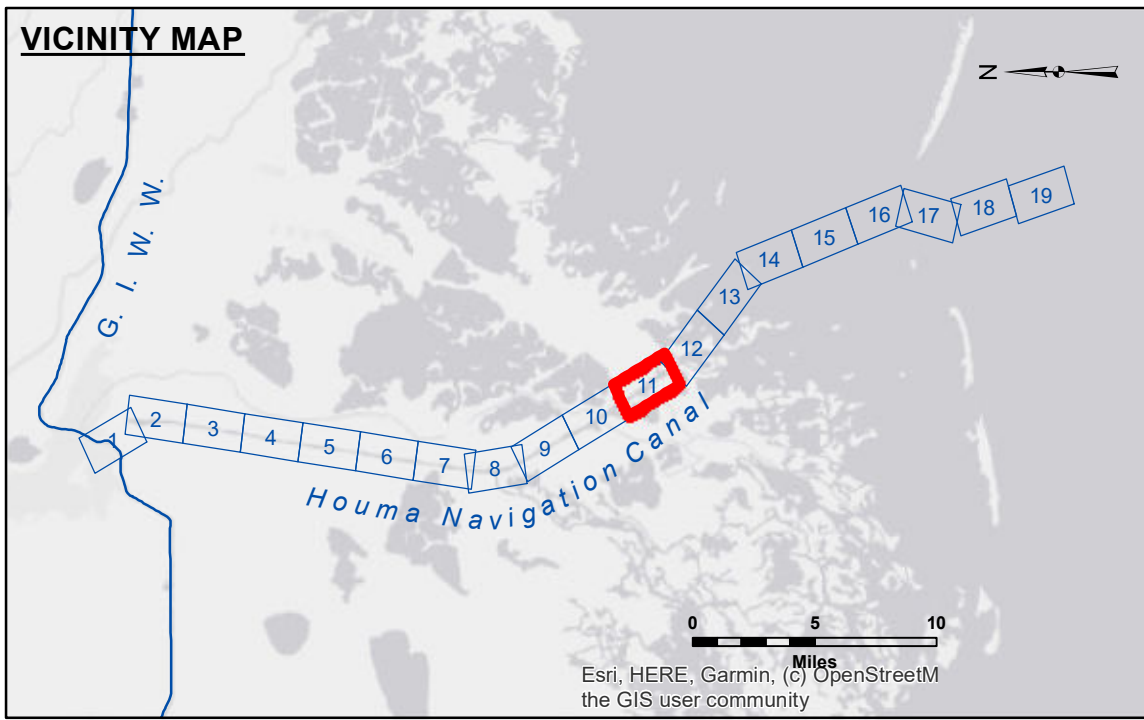


**DISCLAIMER**  
 The information depicted on this map represents the results of a hydrographic survey conducted by the U.S. Army Corps of Engineers. It is not intended for use in navigation. The user is responsible for the accuracy, completeness, and timeliness of the data for their intended purpose. The U.S. Army Corps of Engineers does not warrant the accuracy or completeness of the data for any purpose other than that for which it was collected. The user is responsible for the accuracy, completeness, and timeliness of the data for their intended purpose. The U.S. Army Corps of Engineers does not warrant the accuracy or completeness of the data for any purpose other than that for which it was collected. The user is responsible for the accuracy, completeness, and timeliness of the data for their intended purpose.

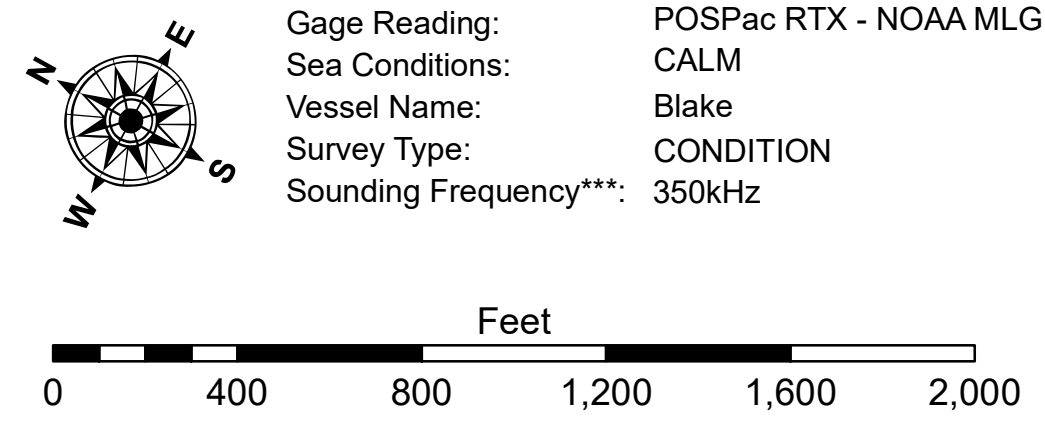
Submitted:	Surveyed By:	Plotted By:	Checked By:
Recommended:	David Evans and Associates	AO	AO
Approved:	Chart Survey Section		
	Chart, Waterways Maintenance Section		

**HOUMA NAVIGATION CANAL  
 LOWER CHANNEL  
 HN\_11\_LWR\_20210905\_CS\_POSTIDA  
 05 September 2021**



**LEGEND**

--- Federal Navigation Channel	○ Cable Area	□ Borrow Area	■ -12' and above
— Federal Navigation Center Line	□ Placement Area	● Shoalest Sounding**	■ -12' to -15'
— As-built Pipeline/Cable	□ Anchorage Area	★ Beacon, General	■ -15' to -18'
..... Unconfirmed Pipeline/Cable	⊗ Obstruction Point	◆ Red Navigation Buoy	■ -18' and below
— Project Depth Contour	✦ Wrecks-Submerged	◆ Green Navigation Buoy	



**NOTES:**  
 Horizontal Coordinate System: North American Datum of 1983 (NAD83), projected to the State Plane Coordinate System (SPCS), Louisiana South Zone. Distance units in U.S. Survey Feet.  
 Soundings are shown in feet and indicate depths below Mean Low Gulf Datum (MLG). Datum Relationships for 76305 as of August 2014:  
 0.0' NAVD88 (OPUS 2010) = 0.42' MLLW (2007-2011) = 1.34' MLG  
 Distances on the Houma Nav. Canal are shown at 1 mile intervals.  
 The location of navigation aids are base on and provided by the U.S. Coast Guard and USACE survey crews.  
 2015 Aerial Photography data source: NAIP  
 Reference is N.O.A.A. Navigation Chart No. 11355.  
 \*\* Shoalest Sounding per Quarter per Reach.  
 \*\*\* High frequency (200 kHz) survey data represents the first signal return at a sounding location and will include suspended solids, known as "fluff", if present. Low frequency (20 kHz) survey data normally penetrates through this "fluff" layer to depict elevations of consolidated bottom material. Low frequency accuracies may vary depending on channel conditions and fathometer settings.

**Sheet Reference Number  
 11 of 19**