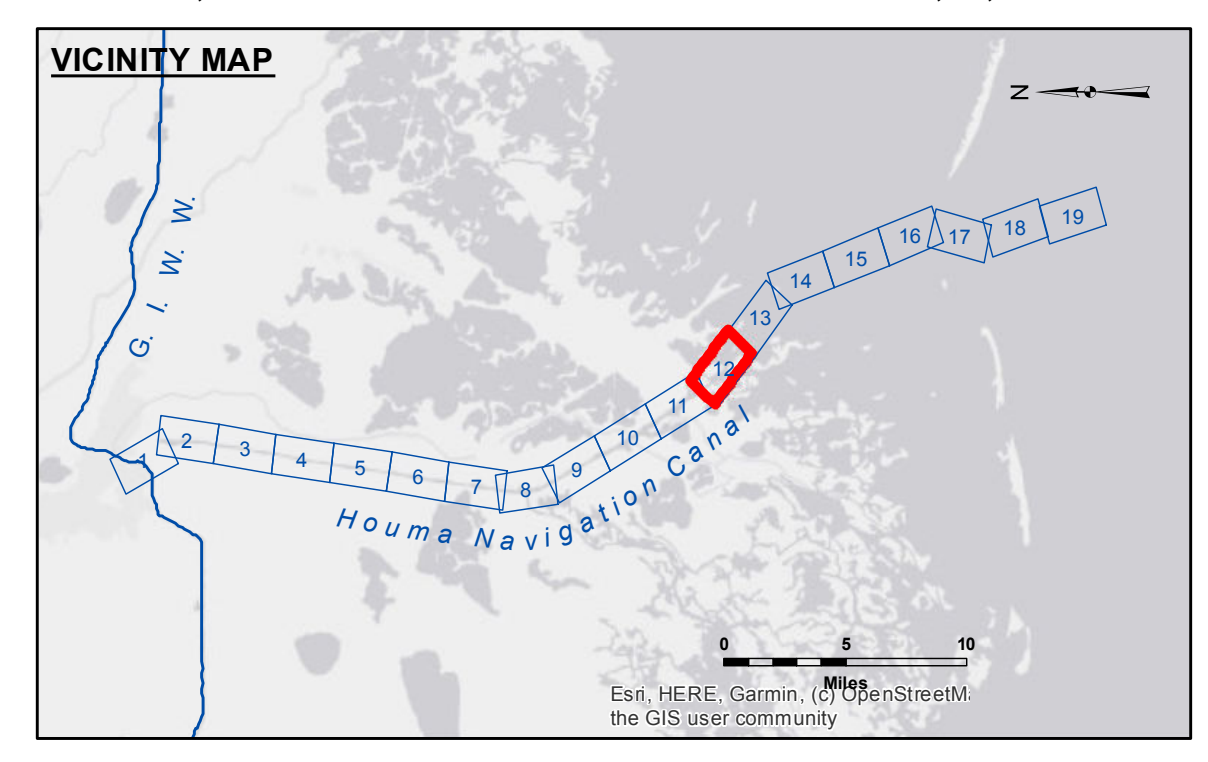


DISCLAIMER
 The information depicted on this map represents the results of a survey conducted by the U.S. Army Corps of Engineers. It is not intended to be used for any purpose other than that for which it was prepared. The user is responsible for the accuracy, completeness, and reliability of the information for any particular purpose of the user. The user is responsible for the accuracy, completeness, and reliability of the information for any particular purpose of the user. The user is responsible for the accuracy, completeness, and reliability of the information for any particular purpose of the user.

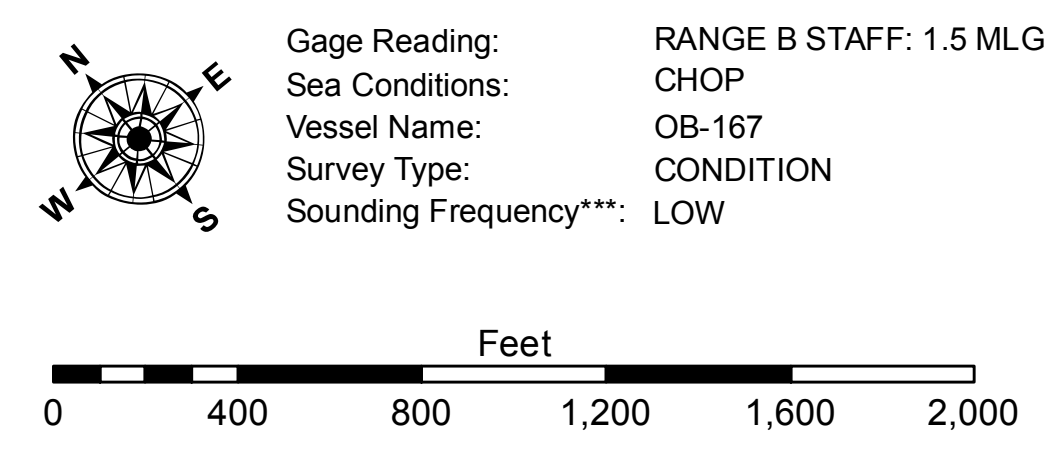
Surveyed By: SPPM	Plotted By: AO	Checked By: AC
Submitted:	Chief, Survey Section	Chief, Waterways Maintenance Section

**HOUMA NAVIGATION CANAL
 BAY CHANNEL
 HN_12_BAY_20210121_CS
 21 January 2021**



LEGEND

--- Federal Navigation Channel	○ Cable Area	3 Fluff Thickness (feet)*	-12' and above
— Federal Navigation Center Line	□ Placement Area	● Shoalest Sounding**	-12' to -15'
— As-built Pipeline/Cable	⊗ Anchorage Area	★ Beacon, General	-15' to -18'
..... Unconfirmed Pipeline/Cable	⊗ Obstruction Point	◆ Red Navigation Buoy	-18' and below
— Project Depth Contour	✦ Wrecks-Submerged	◆ Green Navigation Buoy	



NOTES:
 Horizontal Coordinate System:
 North American Datum of 1983 (NAD83), projected to the State Plane Coordinate System (SPCS), Louisiana South Zone. Distance units in U.S. Survey Feet.
 Vertical Datum:
 Soundings are shown in feet and indicate depths below Mean Low Gulf Datum (MLG).
 Datum Relationships for 76305 as of August 2014:
 0.0' NAVD88 (OPUS 2010) = 0.42' MLLW (2007-2011) = 1.34' MLG
 Distances on the Houma Nav. Canal are shown at 1 mile intervals.
 The location of navigation aids are base on and provided by the U.S. Coast Guard and USACE survey crews.
 2015 Aerial Photography data source: NAIP
 Reference is N.O.A. Navigation Chart No. 11355.
 * Difference between high and low frequency elevations where greater than 1.0'.
 ** Shoalest Sounding per Quarter per Reach.
 *** High frequency (200 kHz) survey data represents the first signal return at a sounding location and will include suspended solids, known as "fluff", if present. Low frequency (20 kHz) survey data normally penetrates through this "fluff" layer to depict elevations of consolidated bottom material. Low frequency accuracies may vary depending on channel conditions and bathymeter settings.

**Sheet Reference Number
 12 of 19**