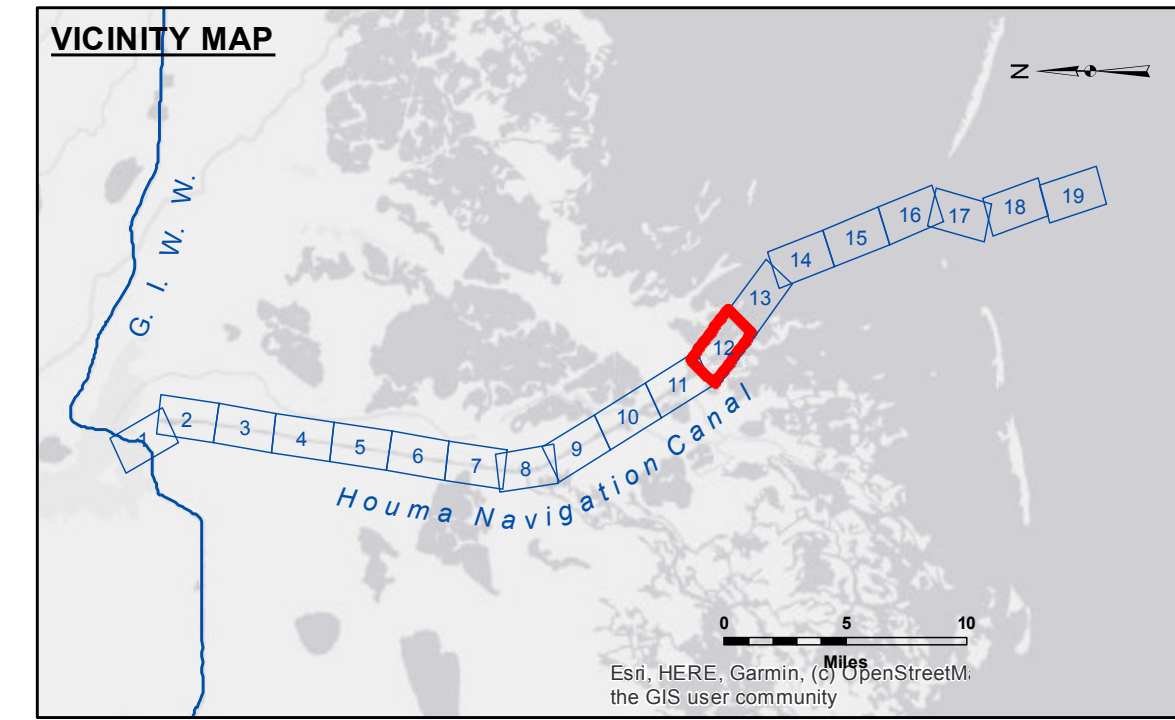
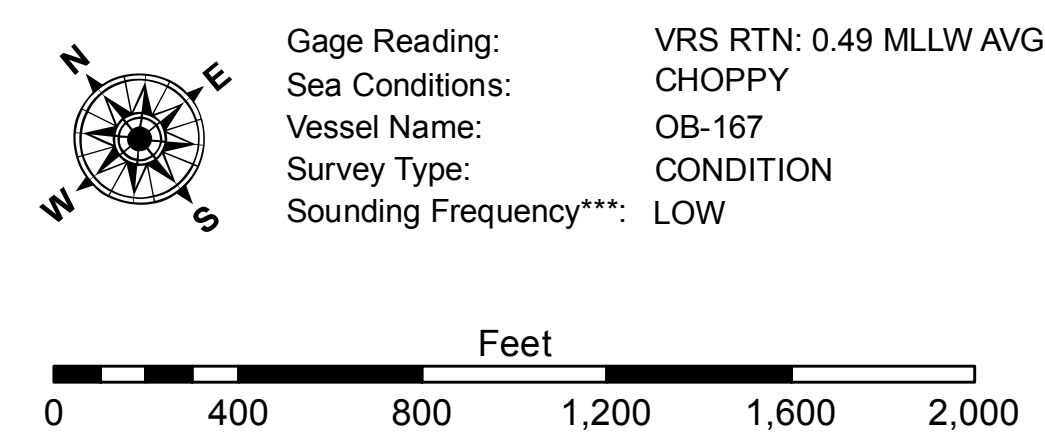


Sheet 11-1321
000,032
000,036

Sheet 13
000,032
000,036



LEGEND			
--- Federal Navigation Channel	○ Cable Area	3 Fluff Thickness (feet)*	-8' and above
— Federal Navigation Center Line	□ Placement Area	● Shoalest Sounding**	-8' to -10'
— As-built Pipeline/Cable	□ Anchorage Area	★ Beacon, General	-10' to -12'
..... Unconfirmed Pipeline/Cable	⊗ Obstruction Point	◆ Red Navigation Buoy	-12' to -16'
— Project Depth Contour	⚓ Wrecks-Submerged	◆ Green Navigation Buoy	-16' to -19'
			-19' and below



NOTES:
 Horizontal Coordinate System:
 North American Datum of 1983 (NAD83), projected to the State Plane Coordinate System (SPCS), Louisiana South Zone. Distance units in U.S. Survey Feet.
 Vertical Datum:
 Soundings are shown in feet and indicate depths below Mean Lower Low Water Datum (MLLW). Datum Relationships for 78305 as of September 2022:
 0.0' NAVD88 (OPUS 2019) = 0.40' MLLW = 1.40' MLG
 Distances on the Houma Nav. Canal are shown at 1 mile intervals.
 The location of navigation aids are base on and provided by the U.S. Coast Guard and USACE survey crews.
 2022 Aerial Photography data source: Optimal GEO, Inc. (1998 DOQQ Imagery in green)
 Reference is N.O.A.A. Navigation Chart No. 11355.
 * Difference between high and low frequency elevations where greater than 1.0'.
 ** Shoalest Sounding per Quarter per Reach.
 *** High frequency (200 kHz) survey data represents the first signal return at a sounding location and will include suspended solids, known as "fluff", if present. Low frequency (20 kHz) survey data normally penetrates through this "fluff" layer to depict elevations of consolidated bottom material. Low frequency accuracies may vary depending on channel conditions and fathometer settings.



DISCLAIMER:
 The United States Government furnishes these data and the recipient accepts and uses them with the express understanding that the data are not to be used for any purpose other than that for which they were prepared, or implied concerning the accuracy, completeness, reliability, usability, or suitability for any particular purpose of the recipient. The user is responsible for the results of any use of these data. The United States Government does not warrant, under no liability whatsoever to any person by reason of any use of these data, that the data are free from errors or omissions, or that the data are the most current or accurate data available. The recipient may not transfer these data to others without also transferring this Disclaimer. The information depicted on this map represents the results of a survey conducted by the United States Army Corps of Engineers and is not to be used for any purpose other than that for which it was prepared. The user is responsible for the results of any use of these data. The United States Government does not warrant, under no liability whatsoever to any person by reason of any use of these data, that the data are free from errors or omissions, or that the data are the most current or accurate data available. The recipient may not transfer these data to others without also transferring this Disclaimer. The information depicted on this map represents the results of a survey conducted by the United States Army Corps of Engineers and is not to be used for any purpose other than that for which it was prepared. The user is responsible for the results of any use of these data. The United States Government does not warrant, under no liability whatsoever to any person by reason of any use of these data, that the data are free from errors or omissions, or that the data are the most current or accurate data available. The recipient may not transfer these data to others without also transferring this Disclaimer.

U.S. ARMY CORPS OF ENGINEERS NEW ORLEANS DISTRICT	
Surveyed By: PMS/SPS	Plotted By: BD
Reviewed By: JMS/SPS	Checked By: AC
Approved: [Signature]	Chief, Waterways Maintenance Section

**HOUMA NAVIGATION CANAL
 BAY CHANNEL
 HN_12_BAY_20220325_CS_MLLW
 25 March 2022**

**Sheet Reference Number
 12 of 19**

Revision Number:
 4.2-20220420