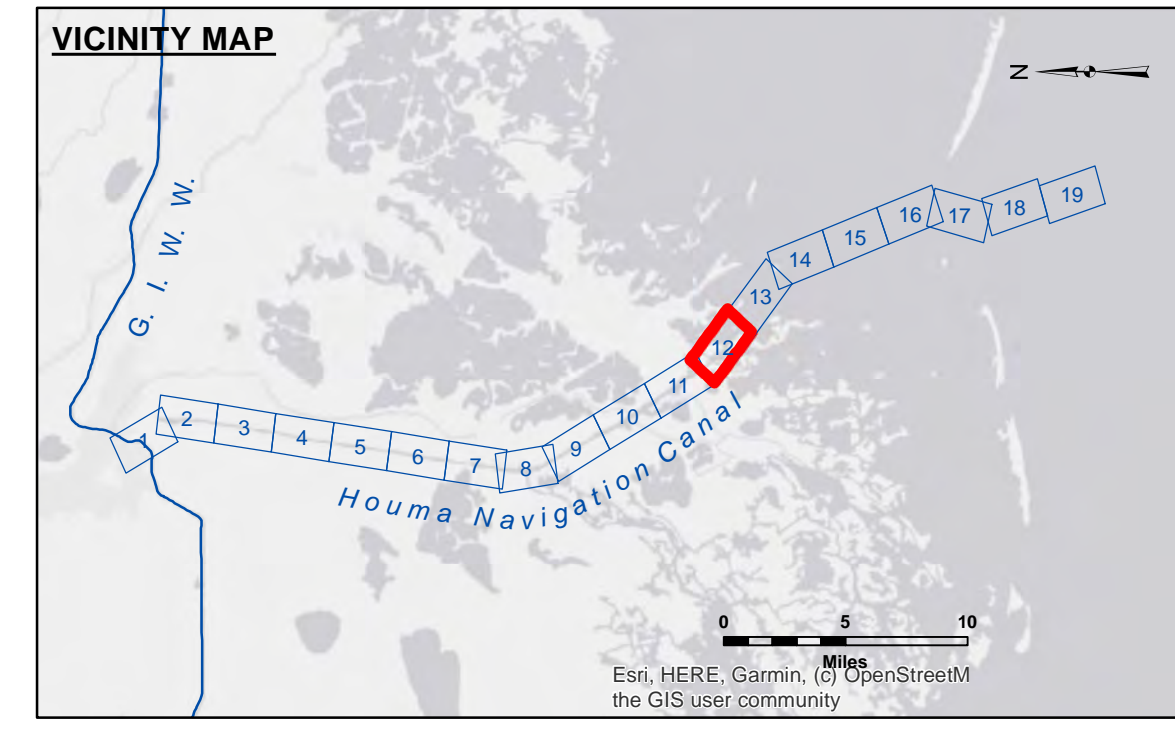


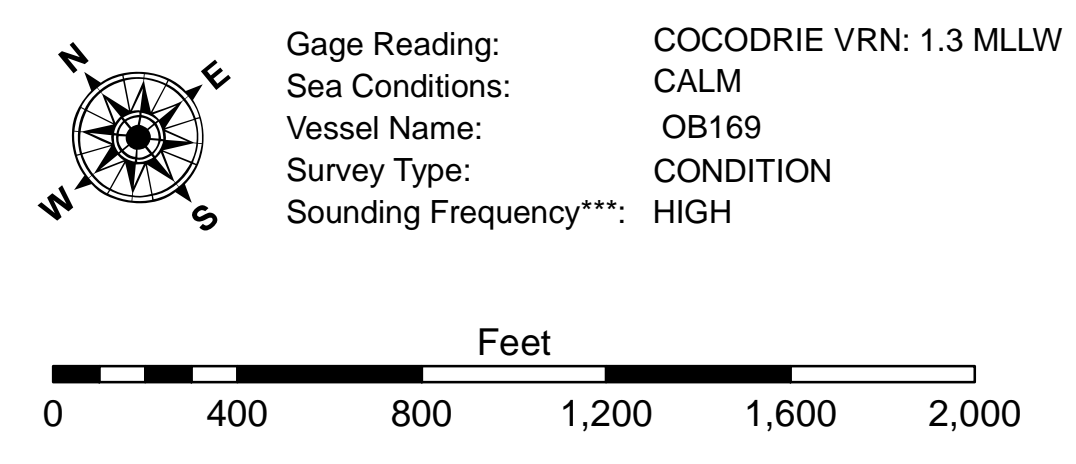
DISCLAIMER
 The United States Government furnishes these data and the recipient accepts and uses them with the express understanding that the data are not warranted for any purpose other than that for which they were originally collected, and that the user is responsible for the results of any use of the data for other than the intended purpose.
 The information depicted on the map represents the results of field surveys and is not intended to be used for any purpose other than that for which it was collected. The user is responsible for the results of any use of the data for other than the intended purpose.
 The information depicted on the map represents the results of field surveys and is not intended to be used for any purpose other than that for which it was collected. The user is responsible for the results of any use of the data for other than the intended purpose.

U.S. ARMY CORPS OF ENGINEERS NEW ORLEANS DISTRICT	Surveyed By: SP-JS	Plotted By: AC	Checked By: AC
	Submittal	Sheet Number	Sheet, Waterways Maintenance Section

**HOUMA NAVIGATION CANAL
 BAY CHANNEL
 HN_12_BAY_20240726_CS
 26 July 2024**



LEGEND		3 Fluff Thickness (feet)*	
--- Federal Navigation Channel	○ Cable Area	● -8' and above	
— Federal Navigation Center Line	□ Placement Area	● -8' to -10'	
— As-built Pipeline/Cable	□ Anchorage Area	● -10' to -12'	
..... Unconfirmed Pipeline/Cable	⊗ Obstruction Point	● -12' to -16'	
— Project Depth Contour	⚓ Wrecks-Submerged	● -16' to -19'	
		● -19' and below	
		★ Beacon, General	
		◆ Red Navigation Buoy	
		◆ Green Navigation Buoy	



NOTES:
 Horizontal Coordinate System:
 North American Datum of 1983 (NAD83), projected to the State Plane Coordinate System (SPCS), Louisiana South Zone. Distance units in U.S. Survey Feet.
 Vertical Datum:
 Soundings are shown in feet and indicate depths below Mean Lower Low Water Datum (MLLW).
 Datum Relationships for 76305 as of September 2022:
 0.0' NAVD88 (OPUS 2019) = 0.40' MLLW = 1.40' MLG
 Distances on the Houma Nav. Canal are shown at 1 mile intervals.
 The location of navigation aids are base on and provided by the U.S. Coast Guard and USACE survey crews.
 2022 Aerial Photography data source: Optimal GEO, Inc. (1998 DOQQ Imagery in green)
 Reference is N.O.A. Navigation Chart No. 11355.
 * Difference between high and low frequency elevations where greater than 1.0'.
 ** Shoalest Sounding per Quarter per Reach.
 *** High frequency (200 kHz) survey data represents the first signal return at a sounding location and will include suspended solids, known as "fluff", if present. Low frequency (20 kHz) survey data normally penetrates through this "fluff" layer to depict elevations of consolidated bottom material. Low frequency accuracies may vary depending on channel conditions and bathymeter settings.

**Sheet Reference Number
 12 of 19**

Revision Number:
 4.2-20240726