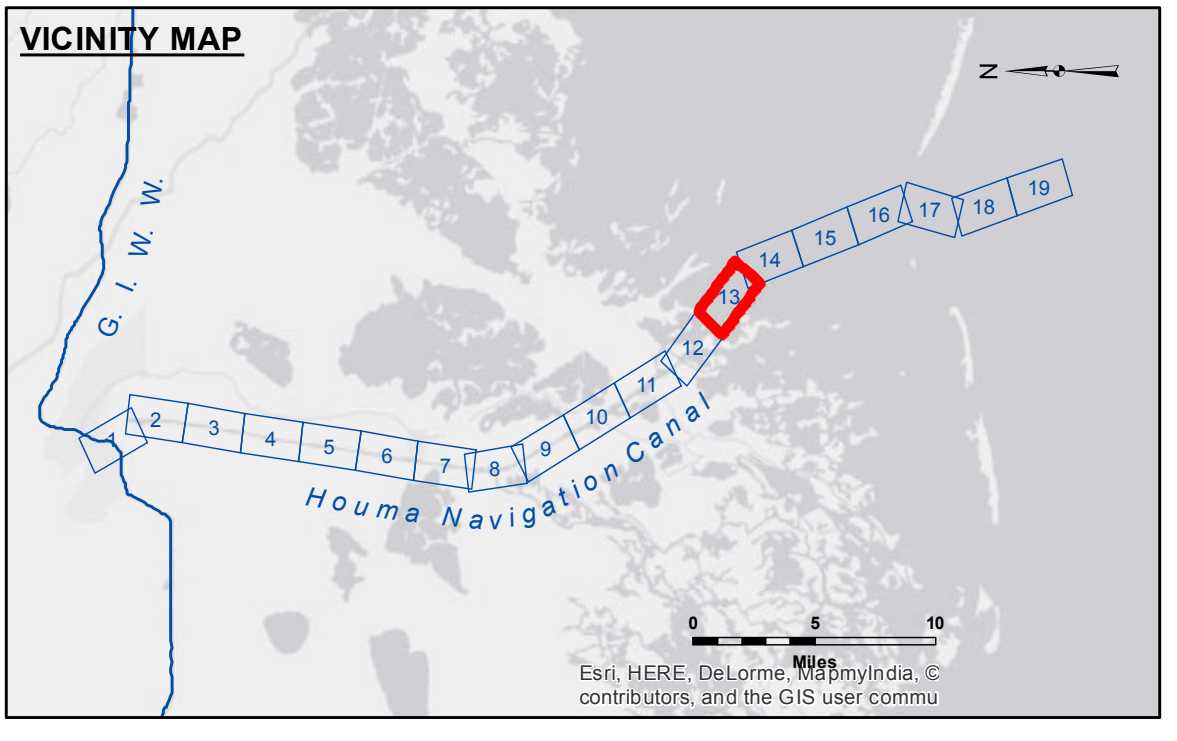


**Access/Use:** The United States Government furnishes these data and the recipient accepts and uses them with the express understanding that the data are not to be used for any purpose other than that for which they were originally prepared. The user is responsible for the results of any use of the data for other than its intended purpose. The information depicted on this map represents the results of a survey conducted under the authority of the United States Army Corps of Engineers and is not to be used for any purpose other than that for which it was originally prepared. The user is responsible for the results of any use of the data for other than its intended purpose.

Submitted:	Surveyed By: SPPM
Recommended:	Plotted By: BTD
Approved:	Checked By: JIB

U.S. ARMY CORPS OF ENGINEERS  
NEW ORLEANS DISTRICT  
Chief, Waterways Maintenance Section

**HOUMA NAVIGATION CANAL  
BAY CHANNEL  
HN\_13\_BAY\_20150503  
03 May 2015**



LEGEND			
--- Federal Navigation Channel	● Cable Area	□ Borrow Area	■ -12' and above
— Federal Navigation Center Line	■ Placement Area	● Shoalest Sounding**	■ -12' to -15'
— As-built Pipeline/Cable	□ Anchorage Area	★ Beacon, General	■ -15' to -18'
..... Unconfirmed Pipeline/Cable	⊗ Obstruction Point	◆ Red Navigation Buoy	■ -18' and below
— Project Depth Contour	✈ Wrecks-Submerged	◆ Green Navigation Buoy	

Gage Reading: COCODRIE: 2.18 MLG  
 Sea Conditions: CALM  
 Vessel Name: OB-167  
 Survey Type: CONDITION  
 Sounding Frequency\*\*\*: LOW

**NOTES:**  
 Horizontal Coordinate System: North American Datum of 1983 (NAD83), projected to the State Plane Coordinate System (SPCS), Louisiana South Zone. Distance units in U.S. Survey Feet.  
 Vertical Datum: Soundings are shown in feet and indicate depths below Mean Low Gulf Datum (MLG). Datum Relationships for 76305 as of August 2014: 0.0' NAVD88 (OPUS 2010) = 0.42' MLLW (2007-2011) = 1.34' MLG  
 Distances on the Houma Nav. Canal are shown at 1 mile intervals.  
 The location of navigation aids are base on and provided by the U.S. Coast Guard and USACE survey crews.  
 2010 Aerial Photography data source: NAIP  
 Reference is N.O.A.A. Navigation Chart No. 11355.  
 \*\* Shoalest Sounding per Quarter per Reach.  
 \*\*\* High frequency (200 kHz) survey data represents the first signal return at a sounding location and will include suspended solids, known as "fluff", if present. Low frequency (20 kHz) survey data normally penetrates through this "fluff" layer to depict elevations of consolidated bottom material. Low frequency accuracies may vary depending on channel conditions and bathymeter settings.

**Sheet Reference Number  
13 of 19**