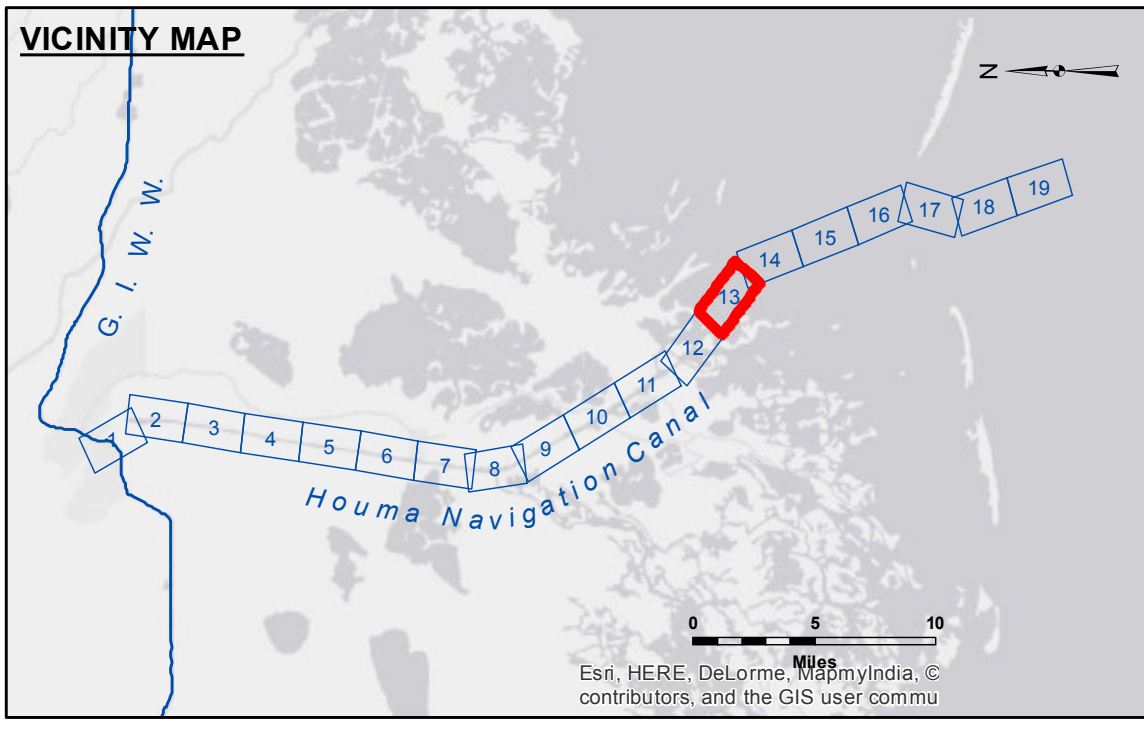


**DISCLAIMER:** The data represents the results of data collection/processing for a specific US Army Corps of Engineers project. The user is responsible for the accuracy, reliability, usability or suitability for any particular purpose of the information. The user is responsible for the results of the application of the data for other than its intended purpose. Data Constraints: Hydrographic survey data is subject to change rapidly due to several factors including but not limited to dredging, shifting sandbars, and other changes in the hydrographic conditions when developed after the date of the survey. The information depicted on this map represents the results of a survey and should not be used for navigation or other purposes. The information depicted on this map represents the results of a survey and should not be used for navigation or other purposes.

Submitted:	Surveyed By: SPPM
Recommended:	Plotted By: AO
Approved:	Checked By: RN

U.S. ARMY CORPS OF ENGINEERS  
NEW ORLEANS DISTRICT  
Chief, Waterways Maintenance Section

**HOUMA NAVIGATION CANAL  
BAY CHANNEL  
HN\_13\_BAY\_20151201  
01 December 2015**



**LEGEND**

--- Federal Navigation Channel	● Cable Area	□ Borrow Area	■ -12' and above
— Federal Navigation Center Line	□ Placement Area	● Shoalest Sounding**	■ -12' to -15'
— As-built Pipeline/Cable	□ Anchorage Area	★ Beacon, General	■ -15' to -18'
..... Unconfirmed Pipeline/Cable	⊗ Obstruction Point	◆ Red Navigation Buoy	■ -18' and below
— Project Depth Contour	⚓ Wrecks-Submerged	◆ Green Navigation Buoy	

Gage Reading: COCODRIE STAFF: 1.8 MLG  
 Sea Conditions: CHOPPY  
 Vessel Name: OB-167  
 Survey Type: CONDITION  
 Sounding Frequency\*\*\*: LOW

Vertical Datum:  
 Soundings are shown in feet and indicate depths below Mean Low Gulf Datum (MLG).  
 Datum Relationships for 76305 as of August 2014:  
 0.0' NAVD88 (OPUS 2010) = 0.42' MLLW (2007-2011) = 1.34' MLG

Distances on the Houma Nav. Canal are shown at 1 mile intervals.

The location of navigation aids are base on and provided by the U.S. Coast Guard and USACE survey crews.

2010 Aerial Photography data source: NAIP  
 Reference is N.O.A. Navigation Chart No. 11355.  
 \*\* Shoalest Sounding per Quarter per Reach.  
 \*\*\* High frequency (200 kHz) survey data represents the first signal return at a sounding location and will include suspended solids, known as "fluff", if present. Low frequency (20 kHz) survey data normally penetrates through this "fluff" layer to depict elevations of consolidated bottom material. Low frequency accuracies may vary depending on channel conditions and fathometer settings.

**Sheet Reference Number  
13 of 19**

Revision Number:  
3.8.0-20150202