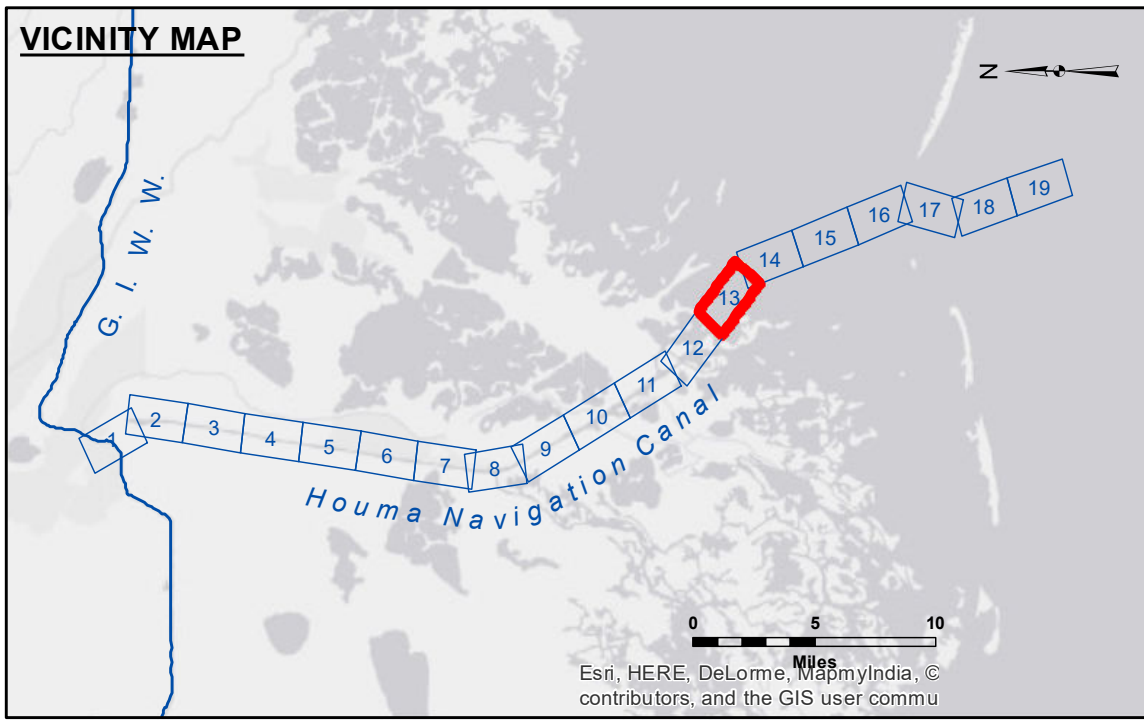


**DISCLAIMER:** The data represented on this map is the property of the U.S. Army Corps of Engineers and is provided for informational purposes only. It is not intended for navigation or other critical applications. The user is responsible for the accuracy, completeness, and timeliness of the data. The Corps of Engineers does not warrant the accuracy or completeness of the data, and it is not intended for use in any application where accuracy is critical. The user is responsible for the accuracy, completeness, and timeliness of the data. The Corps of Engineers does not warrant the accuracy or completeness of the data, and it is not intended for use in any application where accuracy is critical.

|              |                   |
|--------------|-------------------|
| Submitted:   | Surveyed By: SPPM |
| Recommended: | Plotted By: BD    |
| Approved:    | Checked By: MS    |

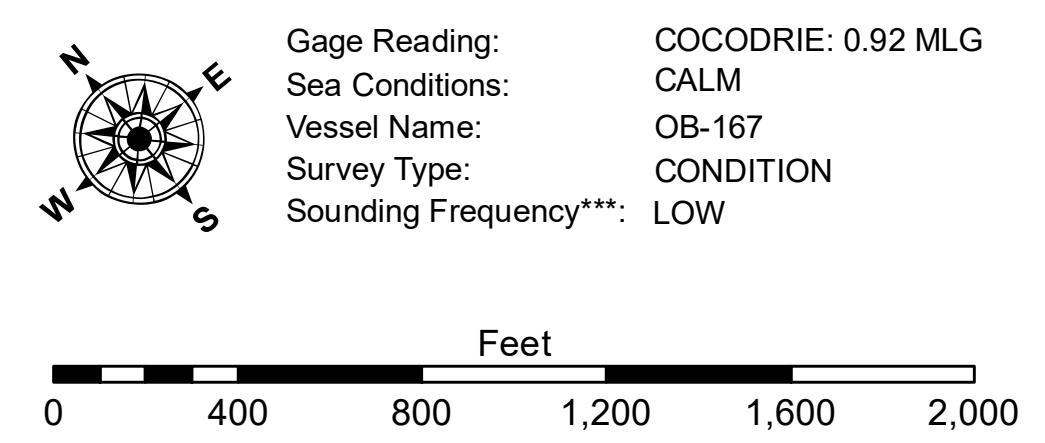
U.S. ARMY CORPS OF ENGINEERS  
NEW ORLEANS DISTRICT

**HOUMA NAVIGATION CANAL  
BAY CHANNEL**  
HN\_13\_BAY\_20171220\_CS  
20 December 2017



**LEGEND**

|                                  |                     |                         |                  |
|----------------------------------|---------------------|-------------------------|------------------|
| --- Federal Navigation Channel   | ● Cable Area        | □ Borrow Area           | ■ -12' and above |
| — Federal Navigation Center Line | □ Placement Area    | ● Shoalest Sounding**   | ■ -12' to -15'   |
| — As-built Pipeline/Cable        | □ Anchorage Area    | ★ Beacon, General       | ■ -15' to -18'   |
| ..... Unconfirmed Pipeline/Cable | ⊗ Obstruction Point | ◆ Red Navigation Buoy   | ■ -18' and below |
| — Project Depth Contour          | ⚓ Wrecks-Submerged  | ◆ Green Navigation Buoy |                  |



**NOTES:**  
Horizontal Coordinate System: North American Datum of 1983 (NAD83), projected to the State Plane Coordinate System (SPCS), Louisiana South Zone. Distance units in U.S. Survey Feet.  
Vertical Datum: Soundings are shown in feet and indicate depths below Mean Low Gulf Datum (MLG). Datum Relationships for 76305 as of August 2014: 0.0' NAVD88 (OPUS 2010) = 0.42' MLLW (2007-2011) = 1.34' MLG  
Distances on the Houma Nav. Canal are shown at 1 mile intervals.  
The location of navigation aids are base on and provided by the U.S. Coast Guard and USACE survey crews.  
2015 Aerial Photography data source: NAIP  
Reference is N.O.A.A. Navigation Chart No. 11355.  
\*\* Shoalest Sounding per Quarter per Reach.  
\*\*\* High frequency (200 kHz) survey data represents the first signal return at a sounding location and will include suspended solids, known as "fluff", if present. Low frequency (20 kHz) survey data normally penetrates through this "fluff" layer to depict elevations of consolidated bottom material. Low frequency accuracies may vary depending on channel conditions and fathometer settings.

**Sheet Reference Number**  
13 of 19

Revision Number:  
3.13-20160811