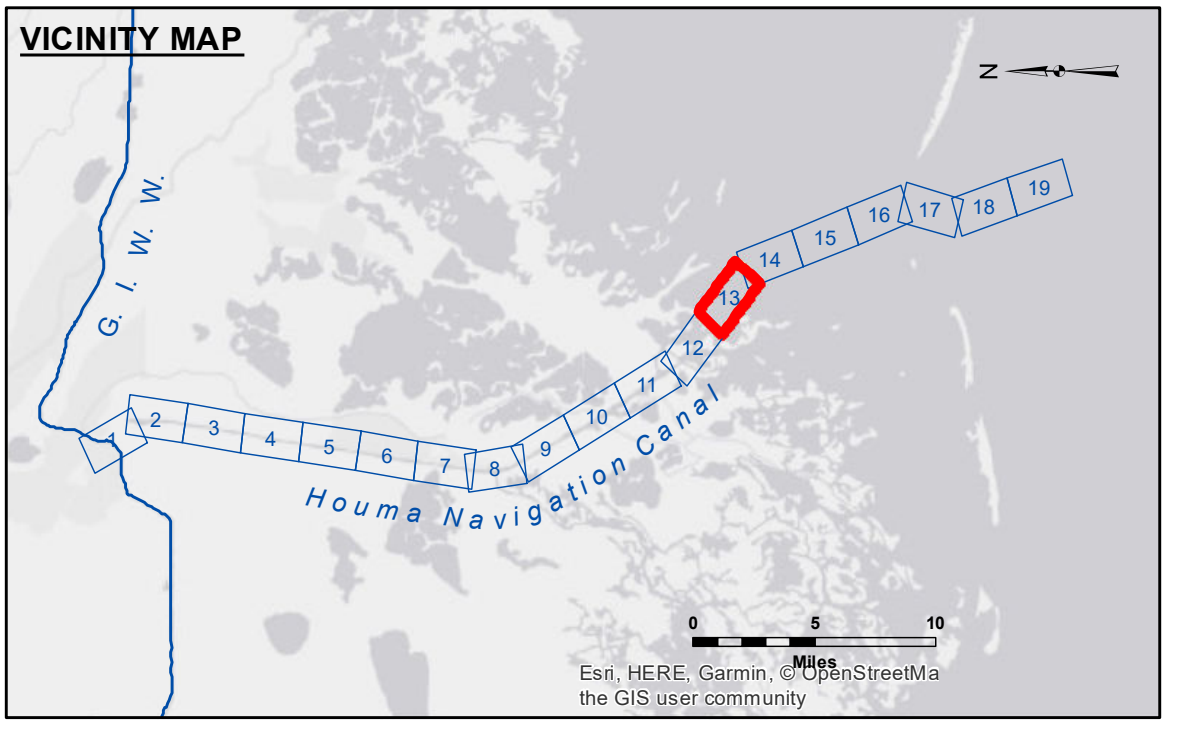


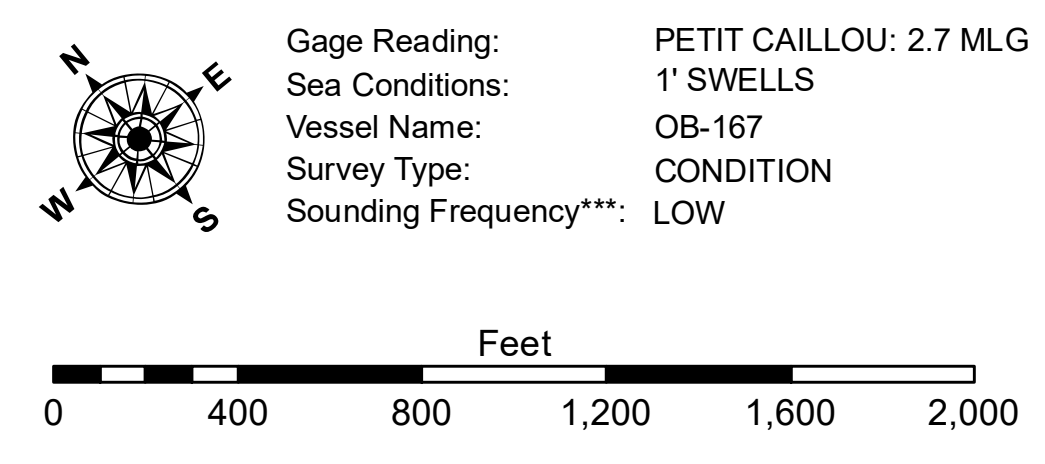
**DISCLAIMER:** The data represented on this map is the result of a specific US Army Corps of Engineers project and is not intended to be used for any other purpose. The user is responsible for the results of any application of the data for other than its intended purpose. The Corps of Engineers accepts no responsibility for changes in the hydrographical conditions when developed after the date of the original survey. Product maintainers should not rely solely upon this information.

Submitted:	Surveyed By: SPPM
Recommended: Chief, Survey Section	Plotted By: AO
Approved: Chief, Waterways Maintenance Section	Checked By: AO

**HOUMA NAVIGATION CANAL  
BAY CHANNEL  
HN\_13\_BAY\_20180531\_CS  
31 May 2018**



LEGEND			
--- Federal Navigation Channel	○ Cable Area	□ Borrow Area	■ -12' and above
— Federal Navigation Center Line	□ Placement Area	● Shoalest Sounding**	■ -12' to -15'
— As-built Pipeline/Cable	□ Anchorage Area	★ Beacon, General	■ -15' to -18'
..... Unconfirmed Pipeline/Cable	⊗ Obstruction Point	◆ Red Navigation Buoy	■ -18' and below
— Project Depth Contour	⚓ Wrecks-Submerged	◆ Green Navigation Buoy	



**NOTES:**  
 Horizontal Coordinate System: North American Datum of 1983 (NAD83), projected to the State Plane Coordinate System (SPCS), Louisiana South Zone. Distance units in U.S. Survey Feet.  
 Vertical Datum: Soundings are shown in feet and indicate depths below Mean Low Gulf Datum (MLG). Datum Relationships for 76305 as of August 2014: 0.0' NAVD88 (OPUS 2010) = 0.42' MLLW (2007-2011) = 1.34' MLG  
 Distances on the Houma Nav. Canal are shown at 1 mile intervals.  
 The location of navigation aids are base on and provided by the U.S. Coast Guard and USACE survey crews.  
 2015 Aerial Photography data source: NAIP  
 Reference is N.O.A.A. Navigation Chart No. 11355.  
 \*\* Shoalest Sounding per Quarter per Reach.  
 \*\*\* High frequency (200 kHz) survey data represents the first signal return at a sounding location and will include suspended solids, known as "fluff", if present. Low frequency (20 kHz) survey data normally penetrates through this "fluff" layer to depict elevations of consolidated bottom material. Low frequency accuracies may vary depending on channel conditions and fathometer settings.

**Sheet Reference Number  
13 of 19**