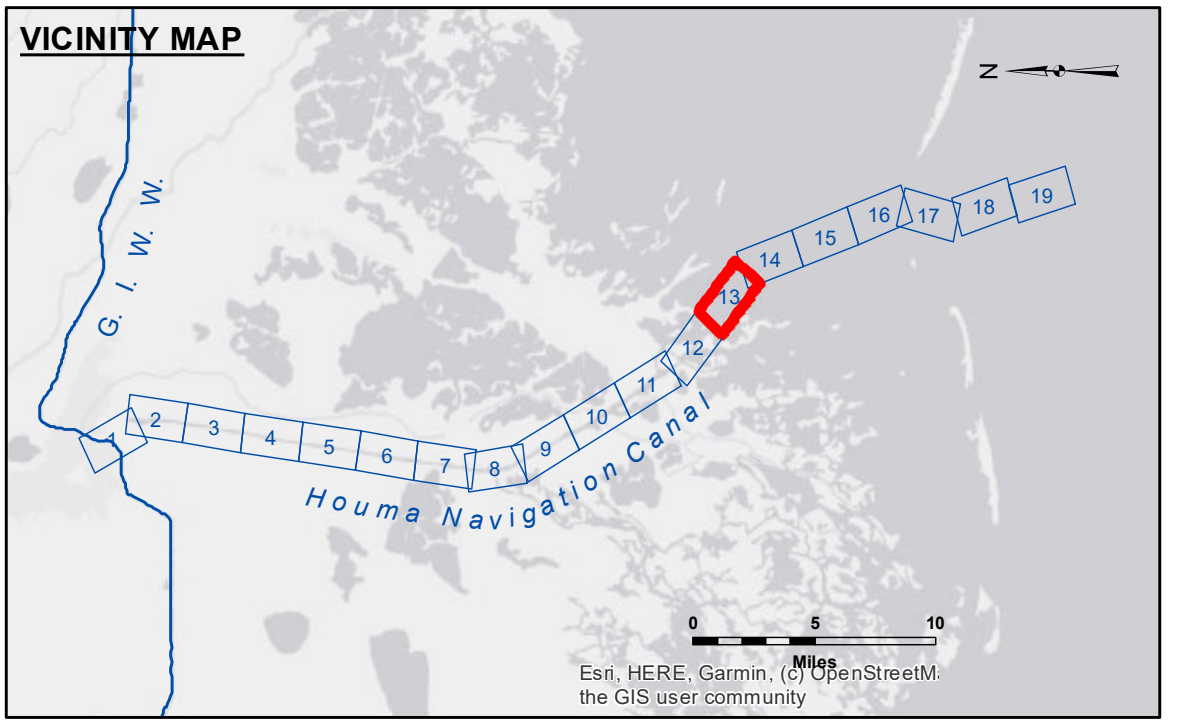


DISCLAIMER: The data represents the results of data collection/processing for a specific US Army Corps of Engineers project. The data is only valid for its intended use, control, time and accuracy specifications. The user is responsible for the results of any application of the data for other than its intended purpose. Data Constants: Hydrographic survey data is subject to change rapidly due to several factors including but not limited to dredging, channel changes, and other factors. The user is responsible for the results of any application of the data for other than its intended purpose. The information depicted on this map represents the results of a survey conducted on the ground and is not intended to be used as a substitute for a field inspection. The user is responsible for the results of any application of the data for other than its intended purpose.

Submitted:	Surveyed By: PM, JA
Recommended:	Plotted By: AO
Approved:	Checked By: AO

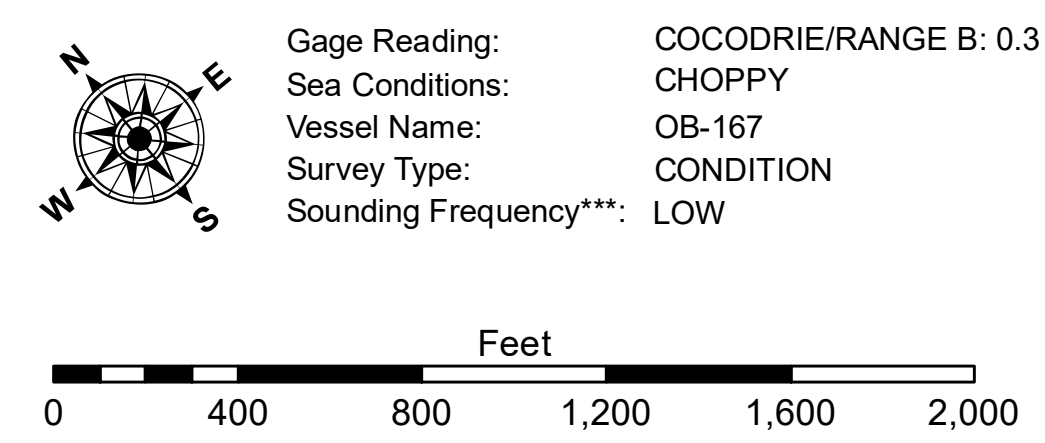
U.S. ARMY CORPS OF ENGINEERS
NEW ORLEANS DISTRICT
Chief, Waterways Maintenance Section

**HOUMA NAVIGATION CANAL
BAY CHANNEL**
HN_13_BAY_20221207_CS
07 December 2022



LEGEND

--- Federal Navigation Channel	○ Cable Area	3 Fluff Thickness (feet)*	-8' and above
— Federal Navigation Center Line	□ Placement Area	● Shoalest Sounding**	-8' to -10'
— As-built Pipeline/Cable	⊗ Anchorage Area	★ Beacon, General	-10' to -12'
..... Unconfirmed Pipeline/Cable	⊗ Obstruction Point	◆ Red Navigation Buoy	-12' to -16'
— Project Depth Contour	⚓ Wrecks-Submerged	◆ Green Navigation Buoy	-16' to -19'
			-19' and below



Sheet Reference Number
13 of 19

Revision Number:
4.2-20220420