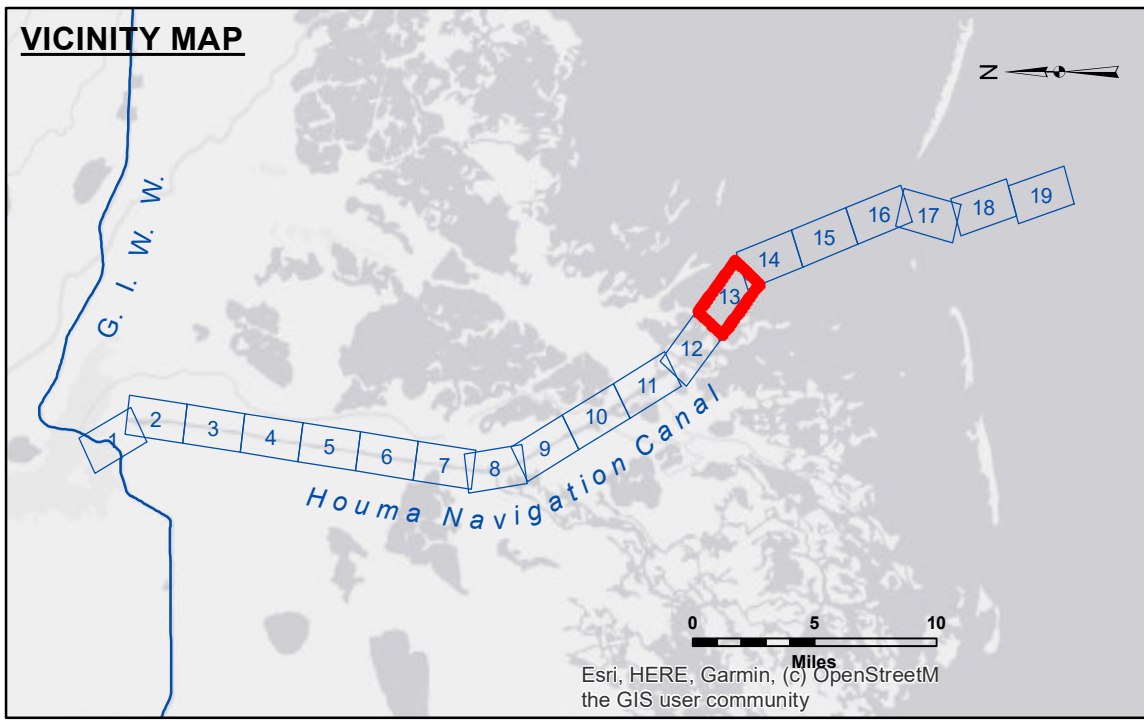


DISCLAIMER
 The United States Government furnishes these data and the recipient accepts and uses them with the express understanding that the data are not to be used for any purpose other than that for which they were prepared, or implied concerning the accuracy, completeness, reliability, usability or suitability for any particular purpose of the recipient. The user is responsible for the results obtained from the use of the data for other than its intended purpose.
 Data Constants: Hydrographic survey data is subject to change rapidly due to several factors including but not limited to changing bathymetry, sedimentation, and other factors. The user is responsible for the hydrographical conditions which develop after the date of the survey. The United States Government accepts no responsibility for changes in the hydrographical conditions which develop after the date of the survey. Product maintainers should not rely solely upon this information.

Submitted:	Surveyed By: PM DR
Recommended: Chief, Survey Section	Plotted By: BD
Approved:	Checked By: AD/JH

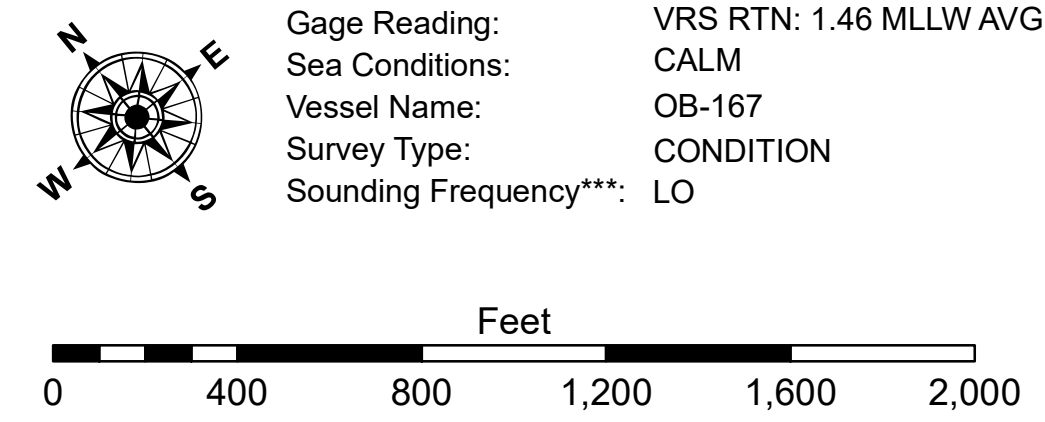
U.S. ARMY CORPS OF ENGINEERS
 NEW ORLEANS DISTRICT

**HOUMA NAVIGATION CANAL
 BAY CHANNEL**
 HN_13_BAY_20230531_AD
 31 May 2023



LEGEND

--- Federal Navigation Channel	○ Cable Area	3 Fluff Thickness (feet)*	-8' and above
— Federal Navigation Center Line	□ Placement Area	● Shoalest Sounding**	-8' to -10'
— As-built Pipeline/Cable	□ Anchorage Area	★ Beacon, General	-10' to -12'
..... Unconfirmed Pipeline/Cable	⊗ Obstruction Point	◆ Red Navigation Buoy	-12' to -16'
— Project Depth Contour	⚓ Wrecks-Submerged	◆ Green Navigation Buoy	-16' to -19'
			-19' and below



NOTES:
 Horizontal Coordinate System:
 North American Datum of 1983 (NAD83), projected to the State Plane Coordinate System (SPCS), Louisiana South Zone. Distance units in U.S. Survey Feet.
 Vertical Datum:
 Soundings are shown in feet and indicate depths below Mean Lower Low Water Datum (MLLW). Datum Relationships for 88455 as of September 2022:
 0.0' NAVD88 (OPUS 2019) = 0.40' MLLW (2012-2016) = 1.40' MLG
 Distances on the Houma Nav. Canal are shown at 1 mile intervals.
 The location of navigation aids are base on and provided by the U.S. Coast Guard and USACE survey crews.
 2022 Aerial Photography data source: Optimal GEO, Inc. (1998 DOQQ Imagery in green)
 Reference is N.O.A.A. Navigation Chart No. 11355.
 * Difference between high and low frequency elevations where greater than 1.0'.
 ** Shoalest Sounding per Quarter per Reach.
 *** High frequency (200 kHz) survey data represents the first signal return at a sounding location and will include suspended solids, known as "fluff", if present. Low frequency (20 kHz) survey data normally penetrates through this "fluff" layer to depict elevations of consolidated bottom material. Low frequency accuracies may vary depending on channel conditions and fathometer settings.

Sheet Reference Number
 13 of 19

Revision Number:
 4-2-2023/04/20