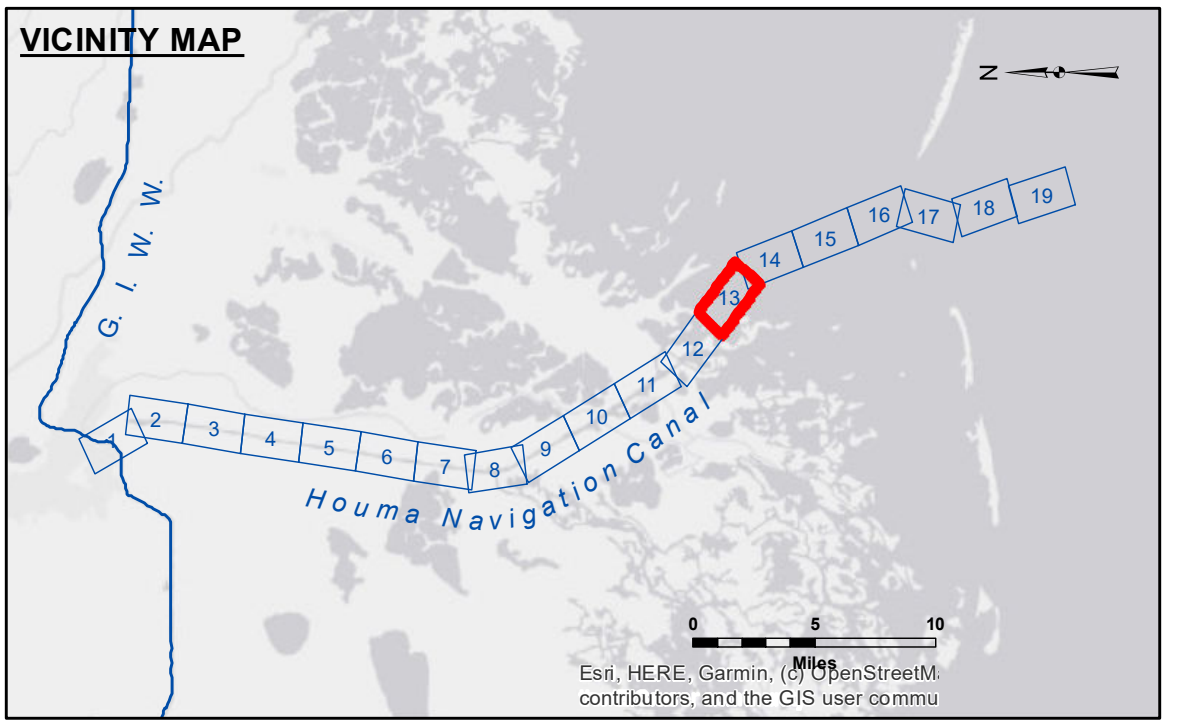


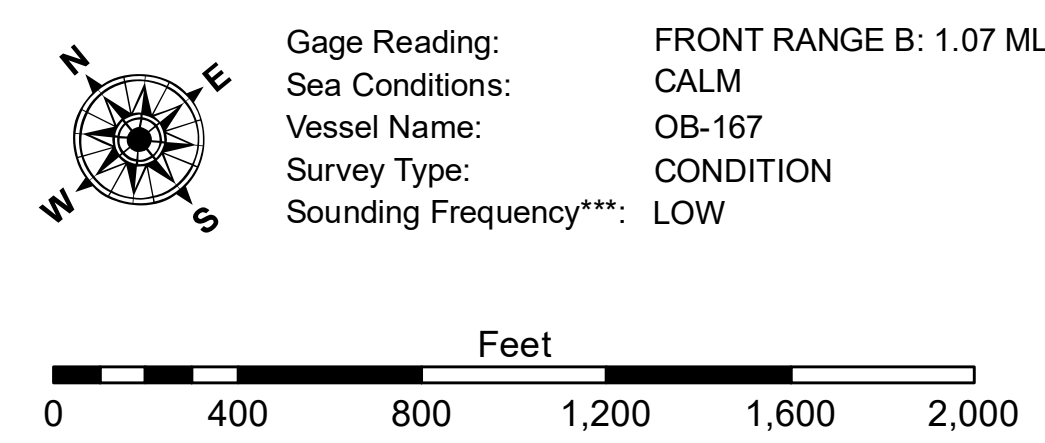
DISCLAIMER
 The data represented on this map is the result of data collection for a specific US Army Corps of Engineers project. The user is responsible for the accuracy, reliability, usability, or availability of the data for any purpose other than that intended. The user is responsible for the results of any application of the data for other than the intended purpose. Data Collection: Hydrographic survey data is subject to change rapidly due to several factors including but not limited to dredging, sedimentation, and changes in bathymetry. The user is responsible for the accuracy, reliability, usability, or availability of the data for any purpose other than that intended. The user is responsible for the results of any application of the data for other than the intended purpose. The information depicted on this map represents the results of a survey conducted on the date of the survey. The user is responsible for the accuracy, reliability, usability, or availability of the data for any purpose other than that intended. The user is responsible for the results of any application of the data for other than the intended purpose.

U.S. ARMY CORPS OF ENGINEERS NEW ORLEANS DISTRICT	
Submitted:	ADAMS/CHAMPINE
Recommended:	JH
Approved:	JH

**HOUMA NAVIGATION CANAL
 BAY CHANNEL
 HN_13_BAY_20231222_CS
 22 December 2023**



LEGEND		
--- Federal Navigation Channel	○ Cable Area	3 Fluff Thickness (feet)*
— Federal Navigation Center Line	□ Placement Area	● Shoalest Sounding**
— As-built Pipeline/Cable	⊗ Anchorage Area	★ Beacon, General
..... Unconfirmed Pipeline/Cable	⊗ Obstruction Point	◆ Red Navigation Buoy
— Project Depth Contour	⚓ Wrecks-Submerged	◆ Green Navigation Buoy



NOTES:
 Horizontal Coordinate System:
 North American Datum of 1983 (NAD83), projected to the State Plane Coordinate System (SPCS), Louisiana South Zone. Distance units in U.S. Survey Feet.
 Vertical Datum:
 Soundings are shown in feet and indicate depths below Mean Lower Low Water Datum (MLLW). Datum Relationships for 8845 as of September 2022:
 0.0' NAVD88 (OPUS 2019) = 0.40' MLLW (2012-2016) = 1.40' MLG
 Distances on the Houma Nav. Canal are shown at 1 mile intervals.
 The location of navigation aids are based on and provided by the U.S. Coast Guard and USACE survey crews.
 2022 Aerial Photography data source: Optimal GEO, Inc. (1998 DOQQ Imagery in green)
 Reference is N.O.A. Navigation Chart No. 11355.
 * Difference between high and low frequency elevations where greater than 1.0'.
 ** Shoalest Sounding per Quarter per Reach.
 *** High frequency (200 kHz) survey data represents the first signal return at a sounding location and will include suspended solids, known as "fluff", if present. Low frequency (20 kHz) survey data normally penetrates through this "fluff" layer to depict elevations of consolidated bottom material. Low frequency accuracies may vary depending on channel conditions and fathometer settings.

**Sheet Reference Number
 13 of 19**