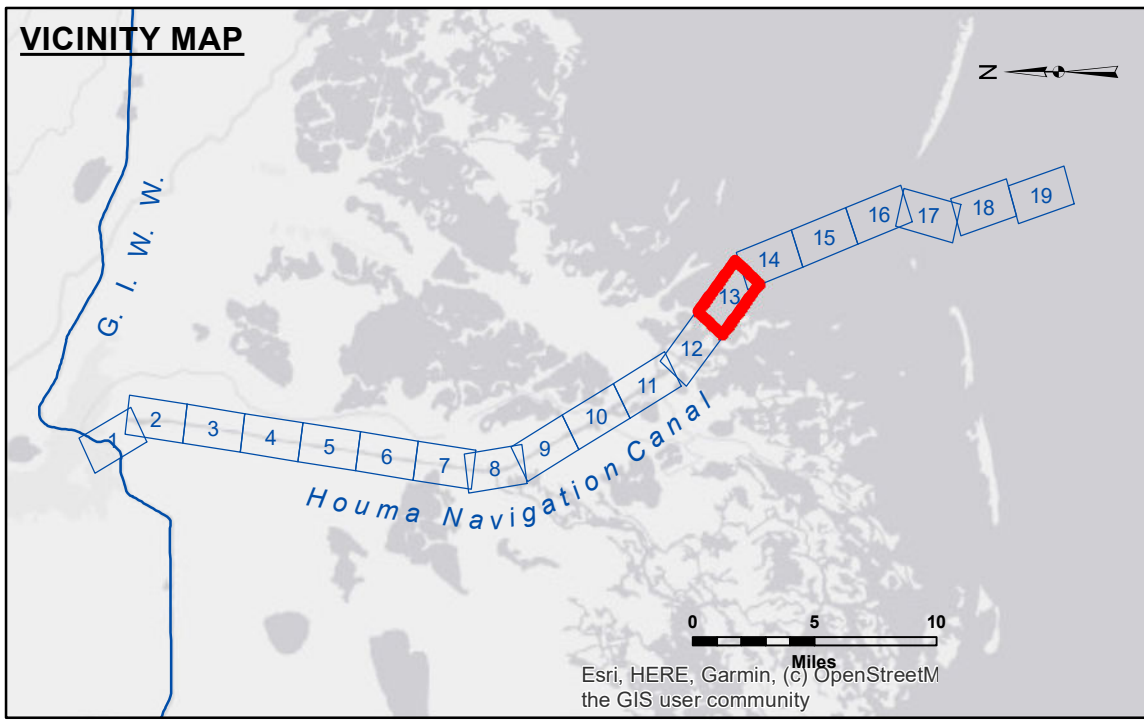


**DISCLAIMER**  
 The information depicted on this map represents the results of a data collection/processing for a specific US Army Corps of Engineers project. It is only valid for its intended use, content, time and accuracy specifications. The user is responsible for the results of any use of this information for purposes other than those intended for this purpose.  
 Data Constants: Hydrographic survey data is subject to change rapidly due to several factors including, but not limited to, changing hydrological conditions which develop after the date of the survey. The US Army Corps of Engineers accepts no responsibility for changes in the hydrological conditions which develop after the date of the survey. The user is responsible for the results of any use of this information for purposes other than those intended for this purpose.  
 Distribution Liability: The data represents the results of data collection/processing for a specific US Army Corps of Engineers project. It is only valid for its intended use, content, time and accuracy specifications. The user is responsible for the results of any use of this information for purposes other than those intended for this purpose.  
 The information depicted on this map represents the results of a data collection/processing for a specific US Army Corps of Engineers project. It is only valid for its intended use, content, time and accuracy specifications. The user is responsible for the results of any use of this information for purposes other than those intended for this purpose.

Submitted:	Surveyed By: RYLAND/CHAMPINE
Recommended:	Plotted By: JH
Approved:	Checked By: JH

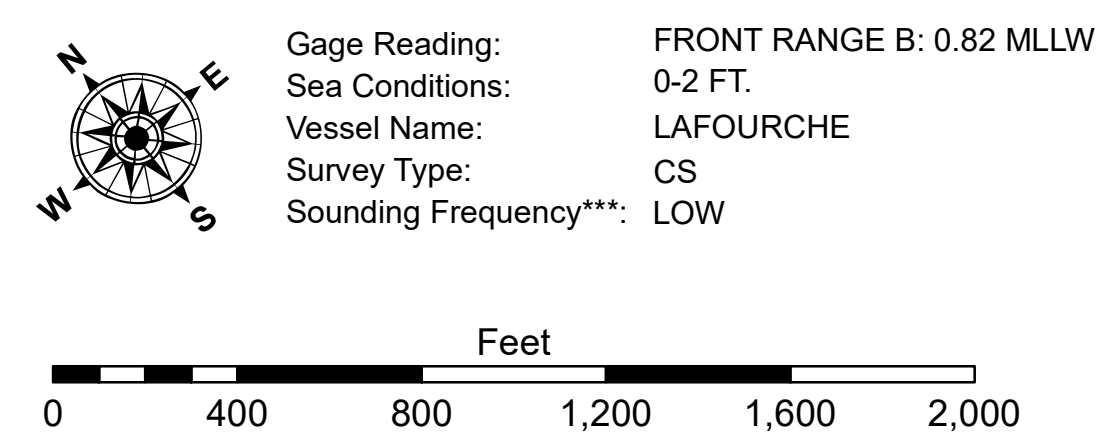
U.S. ARMY CORPS OF ENGINEERS  
 NEW ORLEANS DISTRICT  
 Chief, Survey Section  
 Chief, Waterways Maintenance Section

**HOUMA NAVIGATION CANAL  
 BAY CHANNEL  
 HN\_13\_BAY\_20240711\_CS  
 11 July 2024**



**LEGEND**

--- Federal Navigation Channel	○ Cable Area	3 Fluff Thickness (feet)*	-8' and above
— Federal Navigation Center Line	□ Placement Area	● Shoalest Sounding**	-8' to -10'
— As-built Pipeline/Cable	□ Anchorage Area	★ Beacon, General	-10' to -12'
..... Unconfirmed Pipeline/Cable	⊗ Obstruction Point	◆ Red Navigation Buoy	-12' to -16'
— Project Depth Contour	⚓ Wrecks-Submerged	◆ Green Navigation Buoy	-16' to -19'
			-19' and below



**NOTES:**  
 Horizontal Coordinate System:  
 North American Datum of 1983 (NAD83), projected to the State Plane Coordinate System (SPCS), Louisiana South Zone. Distance units in U.S. Survey Feet.  
 Vertical Datum:  
 Soundings are shown in feet and indicate depths below Mean Lower Low Water Datum (MLLW). Datum Relationships for 88455 as of September 2022:  
 0.0' NAVD88 (OPUS 2019) = 0.40' MLLW (2012-2016) = 1.40' MLG  
 Distances on the Houma Nav. Canal are shown at 1 mile intervals.  
 The location of navigation aids are base on and provided by the U.S. Coast Guard and USACE survey crews.  
 2022 Aerial Photography data source: Optimal GEO, Inc. (1998 DOQQ Imagery in green)  
 Reference is N.O.A.A. Navigation Chart No. 11355.  
 \* Difference between high and low frequency elevations where greater than 1.0'.  
 \*\* Shoalest Sounding per Quarter per Reach.  
 \*\*\* High frequency (200 kHz) survey data represents the first signal return at a sounding location and will include suspended solids, known as "fluff", if present. Low frequency (20 kHz) survey data normally penetrates through this "fluff" layer to depict elevations of consolidated bottom material. Low frequency accuracies may vary depending on channel conditions and fathometer settings.

**Sheet Reference Number  
 13 of 19**

Revision Number:  
 4.2-20200420