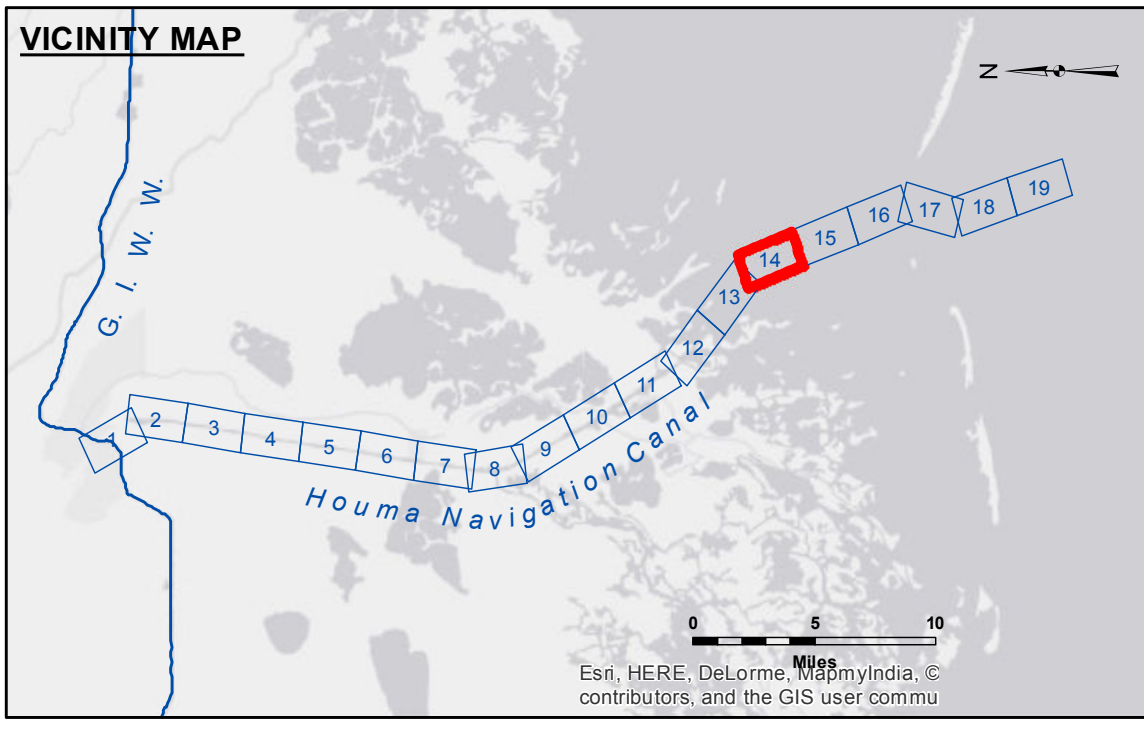


Accession: The United States Government furnishes these data and the recipient accepts and uses them with the express understanding that the data are not to be used for any purpose other than that for which they were originally prepared, and that the user is responsible for the results of any use of the data. The data are not to be used for any purpose other than that for which they were originally prepared, and that the user is responsible for the results of any use of the data.

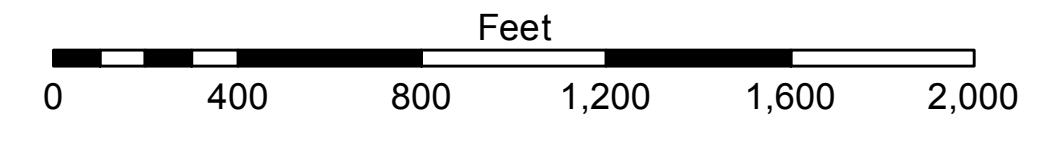
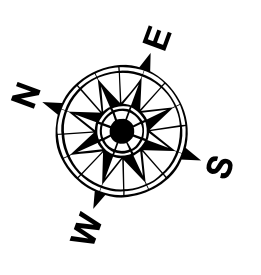
Accession: The United States Government furnishes these data and the recipient accepts and uses them with the express understanding that the data are not to be used for any purpose other than that for which they were originally prepared, and that the user is responsible for the results of any use of the data.

U.S. ARMY CORPS OF ENGINEERS NEW ORLEANS DISTRICT	
Submitted:	Surveyed By: SPPM
Recommended:	Plotted By: AO
Approved:	Checked By: RN
Chief, Waterways Maintenance Section	

**HOUMA NAVIGATION CANAL
BAY CHANNEL
HN_14_BAY_20151201
01 December 2015**



LEGEND			
--- Federal Navigation Channel	○ Cable Area	□ Borrow Area	■ -12' and above
— Federal Navigation Center Line	□ Placement Area	● Shoalest Sounding**	■ -12' to -15'
— As-built Pipeline/Cable	□ Anchorage Area	☆ Beacon, General	■ -15' to -18'
..... Unconfirmed Pipeline/Cable	⊗ Obstruction Point	◆ Red Navigation Buoy	■ -18' and below
— Project Depth Contour	⚓ Wrecks-Submerged	◆ Green Navigation Buoy	



Gage Reading: COCODRIE STAFF: 1.8 MLG
 Sea Conditions: CHOPPY
 Vessel Name: OB-167
 Survey Type: CONDITION
 Sounding Frequency***: LOW

NOTES:
 Horizontal Coordinate System: North American Datum of 1983 (NAD83), projected to the State Plane Coordinate System (SPCS), Louisiana South Zone. Distance units in U.S. Survey Feet.
 Vertical Datum: Soundings are shown in feet and indicate depths below Mean Low Gulf Datum (MLG). Datum Relationship for 76305 as of August 2014: 0.0' NAVD88 (OPUS 2010) = 0.42' MLLW (2007-2011) = 1.34' MLG
 Distances on the Houma Nav. Canal are shown at 1 mile intervals.
 The location of navigation aids are base on and provided by the U.S. Coast Guard and USACE survey crews.
 2010 Aerial Photography data source: NAIP
 Reference is N.O.A.A. Navigation Chart No. 11355.
 ** Shoalest Sounding per Quarter per Reach.
 *** High frequency (200 kHz) survey data represents the first signal return at a sounding location and will include suspended solids, known as "fluff", if present. Low frequency (20 kHz) survey data normally penetrates through this "fluff" layer to depict elevations of consolidated bottom material. Low frequency accuracies may vary depending on channel conditions and fathometer settings.

**Sheet Reference Number
14 of 19**