

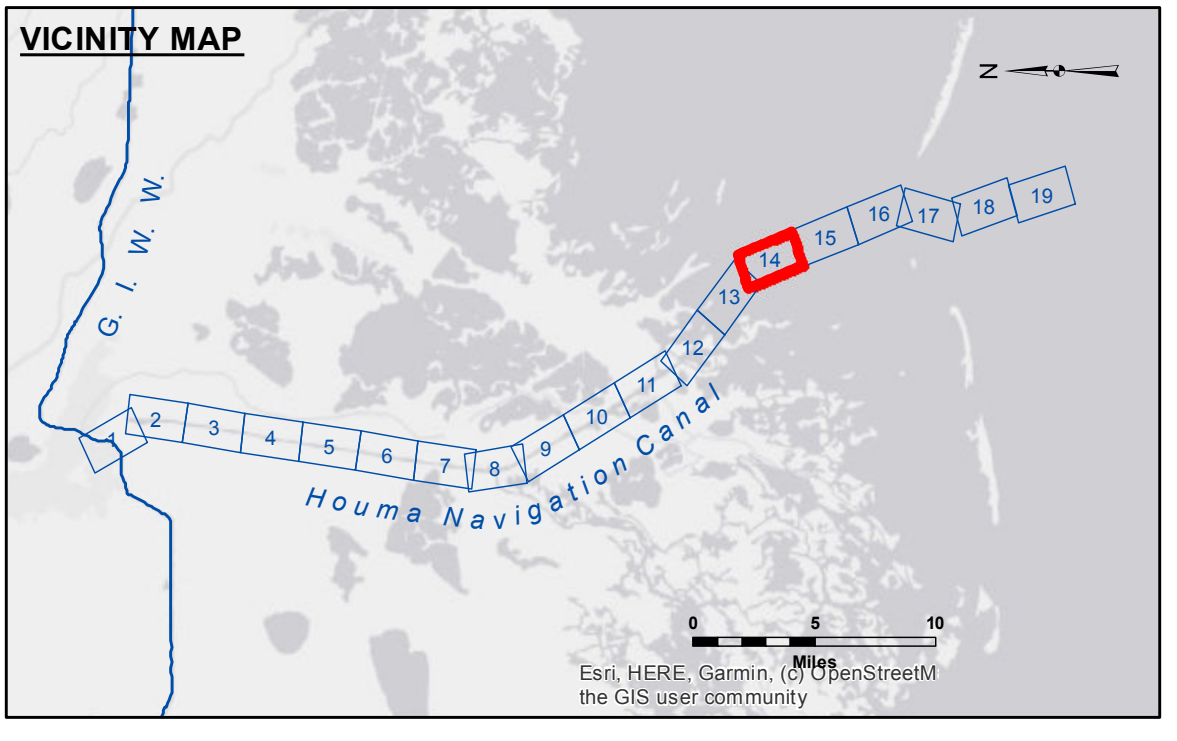
Access/Use: The United States Government furnishes these data and the recipient accepts and uses them with the express understanding that the data are not to be used for any purpose other than that for which they were originally prepared, and that the user is responsible for the results of any use of the data for other than its intended purpose.

Disclaimer: The information depicted on this map represents the results of a survey conducted on or about the date of the survey. The user is responsible for the results of any use of the data for other than its intended purpose. The user is responsible for the results of any use of the data for other than its intended purpose.

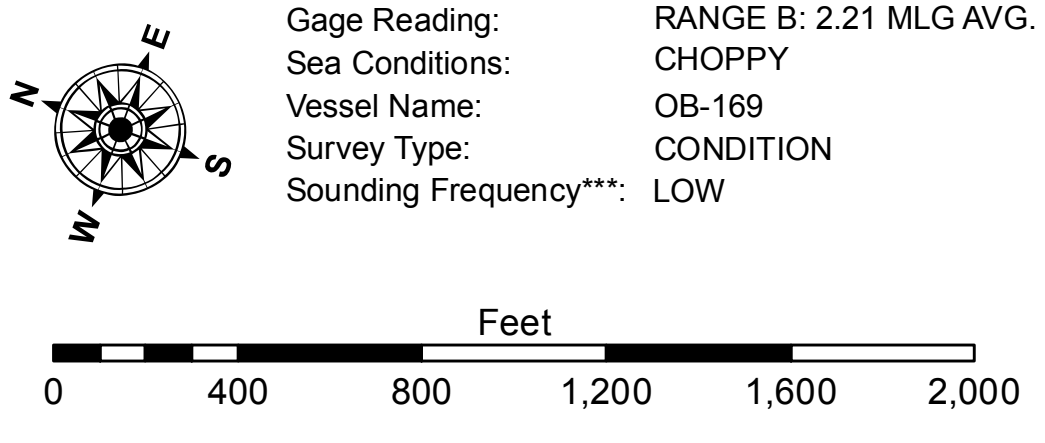
| | |
|--------------|---------------------|
| Submitted: | Surveyed By: SP, PM |
| Recommended: | Plotted By: BD |
| Approved: | Checked By: AC |

U.S. ARMY CORPS OF ENGINEERS
NEW ORLEANS DISTRICT

**HOUMA NAVIGATION CANAL
BAY CHANNEL
HN_14_BAY_20211015_CS
15 October 2021**



| LEGEND | | |
|----------------------------------|---------------------|---------------------------|
| --- Federal Navigation Channel | ○ Cable Area | 3 Fluff Thickness (feet)* |
| — Federal Navigation Center Line | □ Placement Area | ● Shoalest Sounding** |
| — As-built Pipeline/Cable | ⊗ Anchorage Area | ★ Beacon, General |
| Unconfirmed Pipeline/Cable | ⊗ Obstruction Point | ◆ Red Navigation Buoy |
| — Project Depth Contour | ⚓ Wrecks-Submerged | ◆ Green Navigation Buoy |



NOTES:
Horizontal Coordinate System: North American Datum of 1983 (NAD83), projected to the State Plane Coordinate System (SPCS), Louisiana South Zone. Distance units in U.S. Survey Feet.
Vertical Datum: Soundings are shown in feet and indicate depths below Mean Low Gulf Datum (MLG). Datum Relationships for 76305 as of August 2014: 0.0' NAVD88 (OPUS 2010) = 0.42' MLLW (2007-2011) = 1.34' MLG
Distances on the Houma Nav. Canal are shown at 1 mile intervals.
The location of navigation aids are base on and provided by the U.S. Coast Guard and USACE survey crews.
2015 Aerial Photography data source: NAIP
Reference is N.O.A.A. Navigation Chart No. 11355.
* Difference between high and low frequency elevations where greater than 1.0'.
** Shoalest Sounding per Quarter per Reach.
*** High frequency (200 kHz) survey data represents the first signal return at a sounding location and will include suspended solids, known as "fluff", if present. Low frequency (20 kHz) survey data normally penetrates through this "fluff" layer to depict elevations of consolidated bottom material. Low frequency accuracies may vary depending on channel conditions and fathometer settings.

**Sheet Reference Number
14 of 19**

Revision Number:
4.2-20210420