

DISTRIBUTION LIABILITY: The data represents the results of data collection/processing for a specific US Army Corps of Engineers project. It is only valid for its intended use, content, time and accuracy specifications. The user is responsible for the results of any application of the data for other than its intended purpose.

DATA CONSTRAINTS: Hydrographic survey data is subject to change rapidly due to several factors including but not limited to changing bathymetry, sedimentation, and other factors. The user is responsible for the accuracy of the data and should verify the data for its intended use. The US Army Corps of Engineers accepts no responsibility for changes in the hydrographic conditions which develop after the date of the original survey. Product maintainers should not rely solely upon this information.

Submitted:	Surveyed By: PM DR
Recommended: Chief, Survey Section	Plotted By: BD
Approved: Chief, Waterways Maintenance Section	Checked By: AD/JH

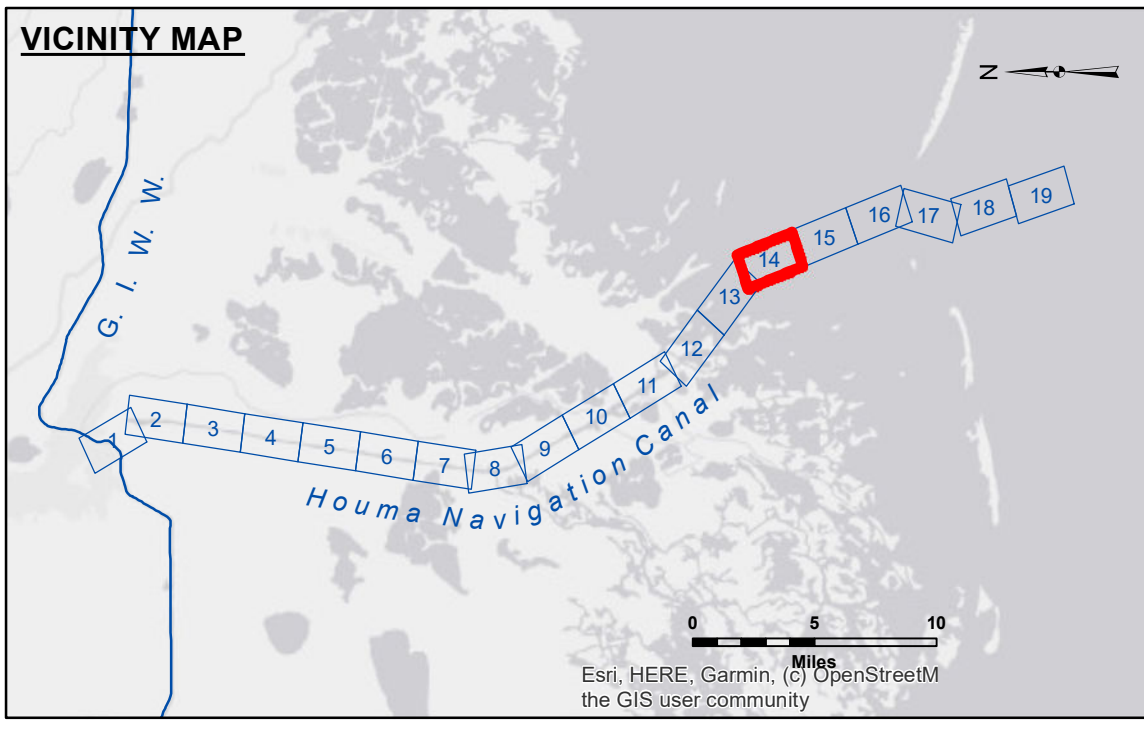
U.S. ARMY CORPS OF ENGINEERS
NEW ORLEANS DISTRICT

**HOUMA NAVIGATION CANAL
BAY CHANNEL
HN_14_BAY_20230531_AD**

31 May 2023

**Sheet Reference Number
14 of 19**

Revision Number:
4-20200420



LEGEND		
--- Federal Navigation Channel	○ Cable Area	3 Fluff Thickness (feet)*
— Federal Navigation Center Line	□ Placement Area	● Shoalest Sounding**
— As-built Pipeline/Cable	⊗ Anchorage Area	★ Beacon, General
..... Unconfirmed Pipeline/Cable	⊗ Obstruction Point	♦ Red Navigation Buoy
— Project Depth Contour	⚓ Wrecks-Submerged	◇ Green Navigation Buoy

