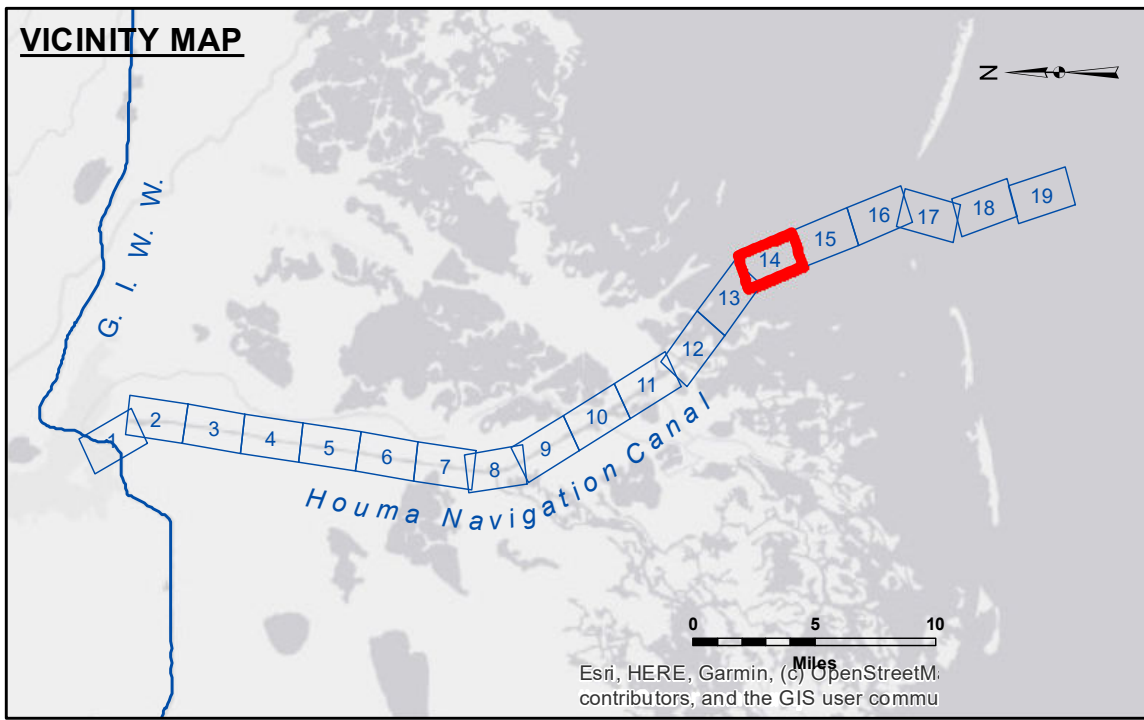


DISCLAIMER

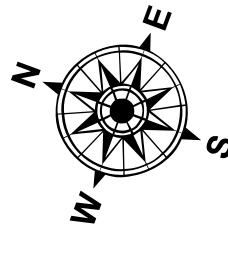
The United States Government furnishes these data and the recipient accepts and uses them with the express understanding that the United States Government makes no warranty, express or implied, concerning the accuracy, completeness, reliability, usability or suitability for any particular purpose of the information. The user is responsible for the results of any use of this information under no liability whatsoever to any person by reason of any use made hereof. These data are provided as a courtesy and are not to be used for any purpose other than that for which they were intended. The recipient may not transfer these data to others without obtaining the District Engineer's approval. The information depicted on this map represents the results of a survey conducted on or about the date of the survey and is not intended to represent the general condition existing at that time.

| | |
|--|--------------------------------|
| U.S. ARMY CORPS OF ENGINEERS NEW ORLEANS DISTRICT | |
| Submitted: | Surveyed By: ADAMS/CHAMPINE |
| Recommended: Chief, Survey Section | Plotted By: JHT |
| Approved: Chief, Waterways Maintenance Section | Checked By: JHT |

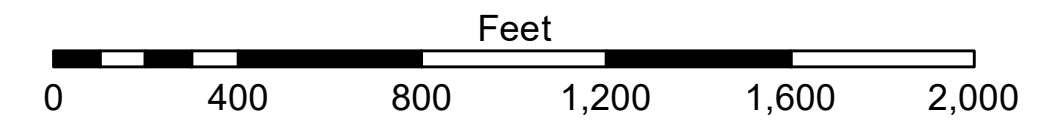
**HOUMA NAVIGATION CANAL
BAY CHANNEL**
HN_14_BAY_20231222_CS
22 December 2023



| LEGEND | |
|----------------------------------|-------------------------|
| --- Federal Navigation Channel | ● Cable Area |
| — Federal Navigation Center Line | ▭ Placement Area |
| — As-built Pipeline/Cable | ⊗ Anchorage Area |
| ⋯ Unconfirmed Pipeline/Cable | ⊗ Obstruction Point |
| — Project Depth Contour | ⚓ Wrecks-Submerged |
| 3 Fluff Thickness (feet)* | ★ Beacon, General |
| ● Shoalest Sounding** | ◆ Red Navigation Buoy |
| ● Green Navigation Buoy | ◆ Green Navigation Buoy |
| ● -8' and above | ● -19' and below |
| ● -8' to -10' | |
| ● -10' to -12' | |
| ● -12' to -16' | |
| ● -16' to -19' | |



Gage Reading: FRONT RANGE B: 1.07 MLLW AVG
 Sea Conditions: CALM
 Vessel Name: OB-167
 Survey Type: CONDITION
 Sounding Frequency***: LOW



NOTES:
 Horizontal Coordinate System:
 North American Datum of 1983 (NAD83), projected to the State Plane
 Coordinate System (SPCS), Louisiana South Zone. Distance units in U.S. Survey Feet.
 Vertical Datum:
 Soundings are shown in feet and indicate depths below Mean Lower Low Water Datum (MLLW).
 Datum Relationships for 88455 as of September 2022:
 0.0' NAVD88 (OPUS 2019) = 0.40' MLLW (2012-2016) = 1.40' MLG
 Distances on the Houma Nav. Canal are shown at 1 mile intervals.
 The location of navigation aids are base on and provided by the U.S. Coast Guard
 and USACE survey crews.
 2022 Aerial Photography data source: Optimal GEO, Inc. (1998 DOQQ Imagery in green)
 Reference is N.O.A.A. Navigation Chart No. 11355.
 * Difference between high and low frequency elevations where greater than 1.0'.
 ** Shoalest Sounding per Quarter per Reach.
 *** High frequency (200 kHz) survey data represents the first signal return at a sounding
 location and will include suspended solids, known as "fluff", if present. Low frequency (20 kHz)
 survey data normally penetrates through this "fluff" layer to depict elevations of consolidated bottom
 material. Low frequency accuracies may vary depending on channel conditions and fathometer
 settings.

Sheet Reference Number
14 of 19