



**DISCLAIMER**  
The data represented on this map were derived from the results of a data collection project for a specific US Army Corps of Engineers project. The data is only valid for its intended use, control, time and accuracy specifications. The user is responsible for the results of any application of the data for other than its intended purpose.  
Data Constraints - Hydrographic survey data is subject to change rapidly due to several factors including but not limited to dredging operations, changes in channel conditions, and changes in the hydrographical conditions when developed after the date of the survey. The user is responsible for the results of any application of the data to other than its intended purpose. The information depicted on this map represents the results of a survey conducted on the date of the survey and is not intended to represent the general condition existing at that time.

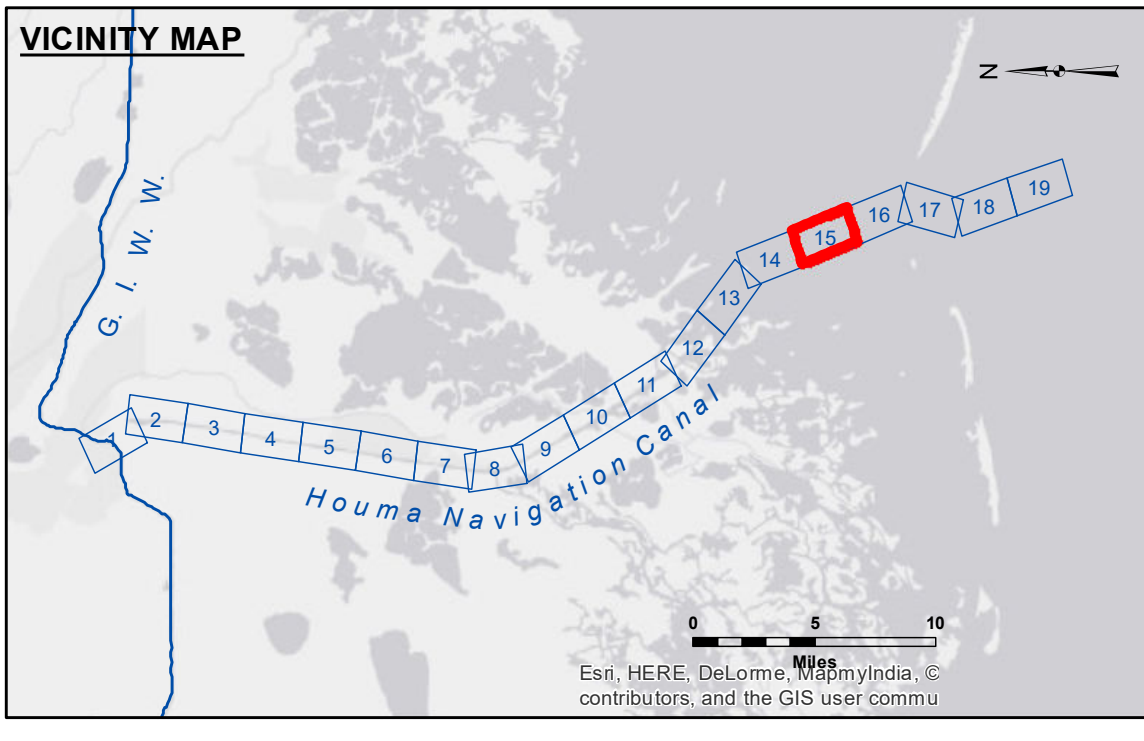
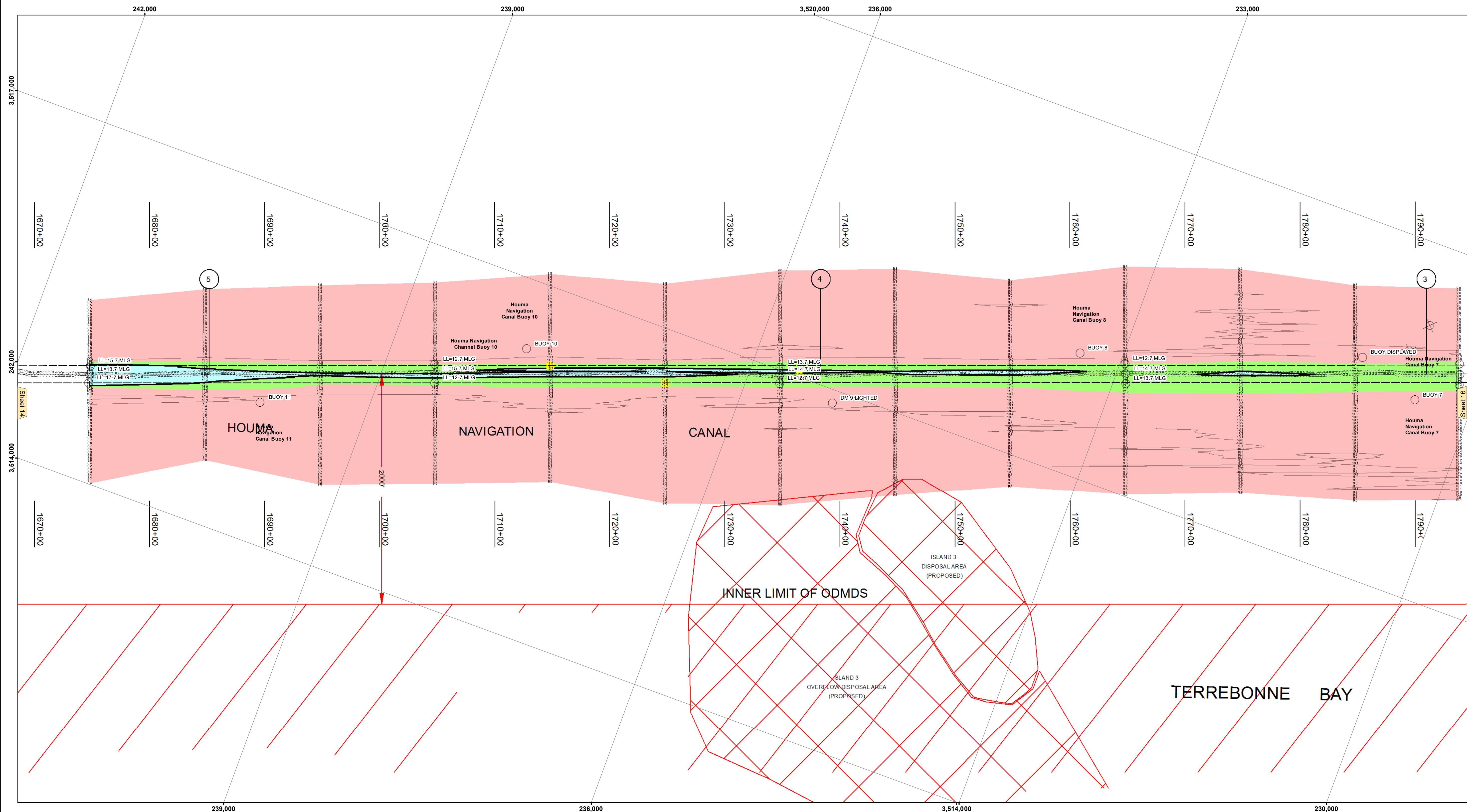
Submitted:	Surveyed By: SP,DR
Recommended:	Plotted By: BD
Approved:	Checked By: AC

U.S. ARMY CORPS OF ENGINEERS  
NEW ORLEANS DISTRICT

**HOUMA NAVIGATION CANAL  
BAY CHANNEL  
HN\_15\_BAY\_20180522\_CS  
22 May 2018**

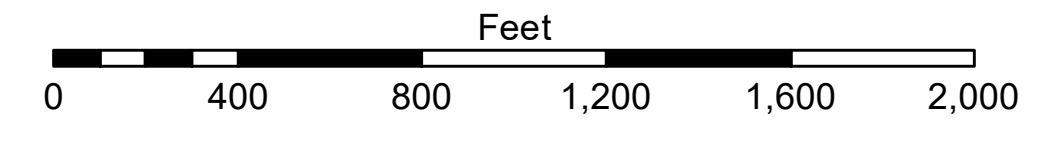
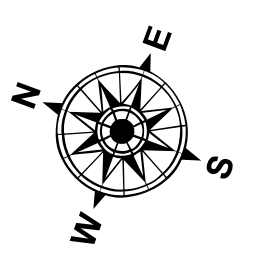
**Sheet Reference Number  
15 of 19**

Revision Number:  
3.13-20160811



**LEGEND**

--- Federal Navigation Channel	○ Cable Area	□ Borrow Area	■ -12' and above
— Federal Navigation Center Line	□ Placement Area	● Shoalest Sounding**	■ -12' to -15'
— As-built Pipeline/Cable	□ Anchorage Area	★ Beacon, General	■ -15' to -18'
..... Unconfirmed Pipeline/Cable	✕ Obstruction Point	◆ Red Navigation Buoy	■ -18' and below
— Project Depth Contour	✎ Wrecks-Submerged	◆ Green Navigation Buoy	



Gage Reading: COCODRIE: 2.34 MLG  
Sea Conditions: CALM  
Vessel Name: OB-167  
Survey Type: CONDITION  
Sounding Frequency\*\*\*: LOW

**NOTES:**  
Horizontal Coordinate System:  
North American Datum of 1983 (NAD83), projected to the State Plane Coordinate System (SPCS), Louisiana South Zone. Distance units in U.S. Survey Feet.  
Vertical Datum:  
Soundings are shown in feet and indicate depths below Mean Low Gulf Datum (MLG).  
Datum Relationship for 76305 as of August 2014:  
0.0' NAVD88 (OPUS 2010) = 0.42' MLLW (2007-2011) = 1.34' MLG  
Distances on the Houma Nav. Canal are shown at 1 mile intervals.  
The location of navigation aids are base on and provided by the U.S. Coast Guard and USACE survey crews.  
2015 Aerial Photography data source: NAIP  
Reference is N.O.A.A. Navigation Chart No. 11355.  
\*\* Shoalest Sounding per Quarter per Reach.  
\*\*\* High frequency (200 kHz) survey data represents the first signal return at a sounding location and will include suspended solids, known as "fluff", if present. Low frequency (20 kHz) survey data normally penetrates through this "fluff" layer to depict elevations of consolidated bottom material. Low frequency accuracies may vary depending on channel conditions and fathometer settings.