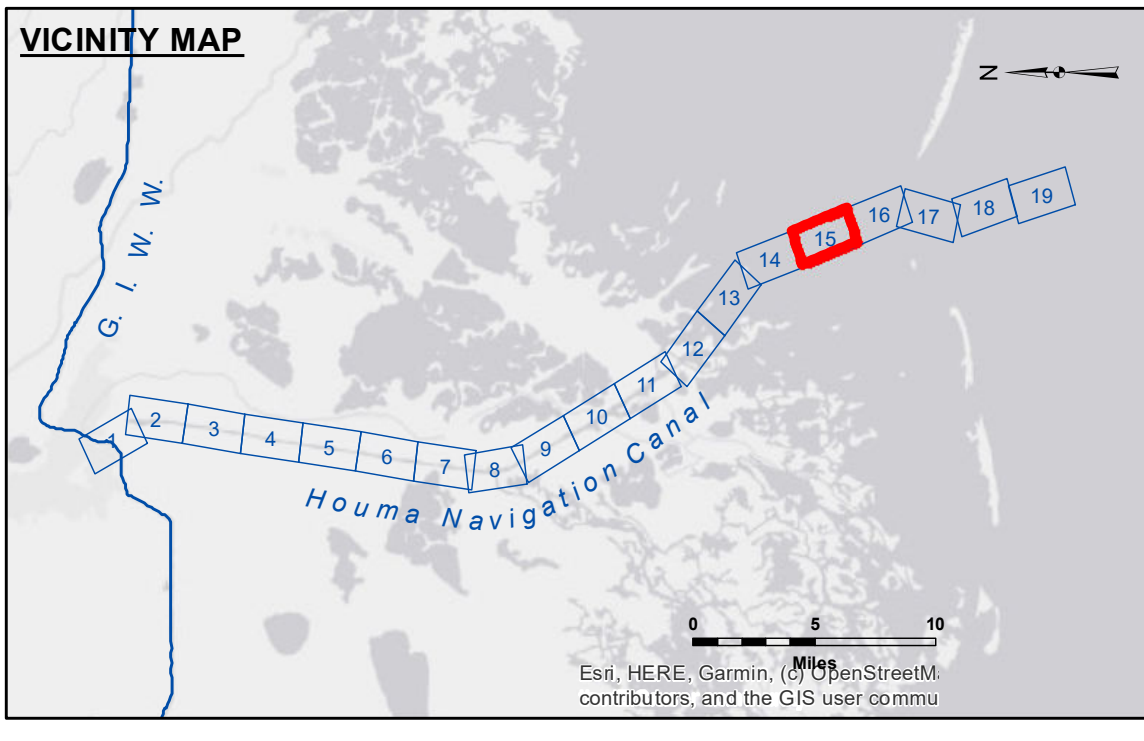


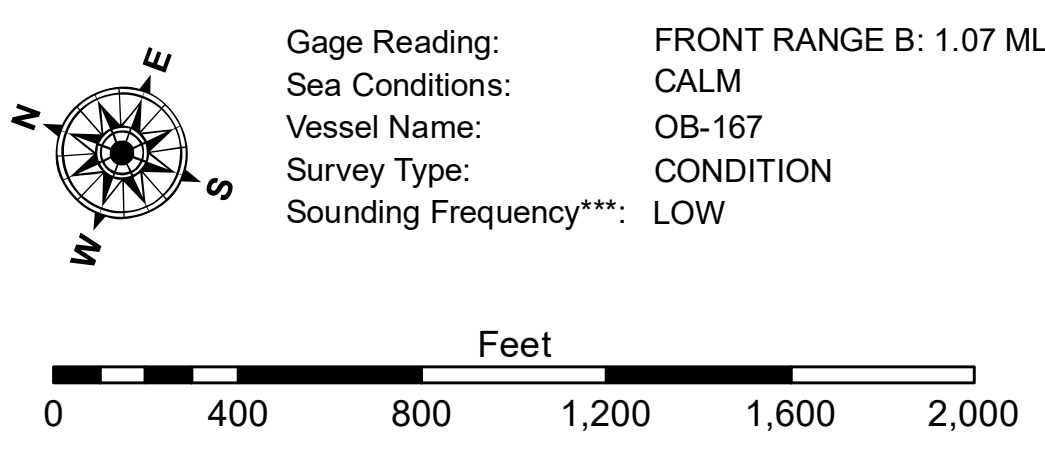
DISCLAIMER: The data represented on this map is the result of data collected and processed for a specific US Army Corps of Engineers project. It is only valid for its intended use, control, time and accuracy specifications. The user is responsible for the results of their use. Application of the data for other than its intended purpose. Data: Constant Hydrographic survey data is subject to change rapidly due to several factors including but not limited to dredging activities, sedimentation, and changes in bathymetry. The US Army Corps of Engineers accepts no responsibility for changes in the hydrographic conditions which develop after the date of the survey. The information depicted on this map represents the results of a survey conducted on or about the date indicated. It is not intended to represent the general condition existing at that time.

U.S. ARMY CORPS OF ENGINEERS NEW ORLEANS DISTRICT		
Submitted:	Surveyed By:	ADAMS/CHAMPINE
Recommended:	Plotted By:	JH
Checked:	Chart Survey Section	
Approved:	Chief, Waterways Maintenance Section	



LEGEND

--- Federal Navigation Channel	● Cable Area	3 Fluff Thickness (feet)*	-8' and above
— Federal Navigation Center Line	□ Placement Area	● Shoalest Sounding**	-8' to -10'
— As-built Pipeline/Cable	⊗ Anchorage Area	★ Beacon, General	-10' to -12'
⋯ Unconfirmed Pipeline/Cable	⊗ Obstruction Point	♦ Red Navigation Buoy	-12' to -16'
— Project Depth Contour	⚓ Wrecks-Submerged	◆ Green Navigation Buoy	-16' to -19'
			-19' and below



**HOUMA NAVIGATION CANAL
 BAY CHANNEL
 HN_15_BAY_20231222_CS
 22 December 2023**

**Sheet
 Reference
 Number
 15 of 19**