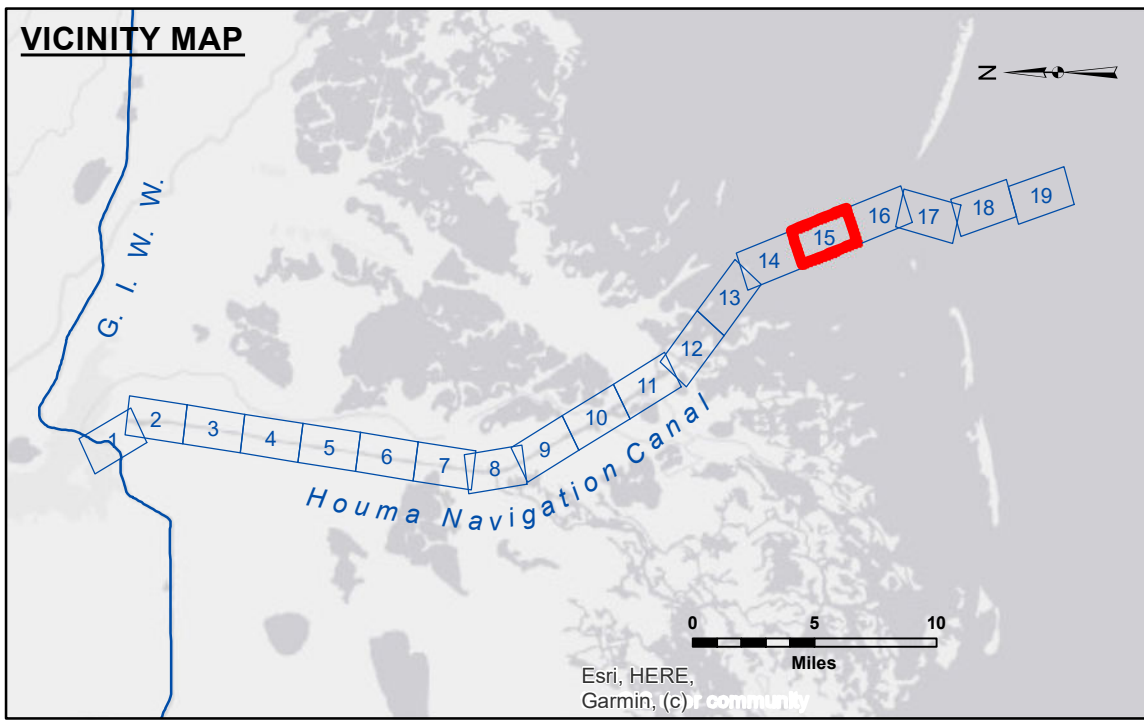


DISCLAIMER
 The United States Government furnishes these data and the recipient accepts and uses them with the express understanding that the data are not to be used for any purpose other than that for which they were prepared, or implied concerning the accuracy, completeness, reliability, usability or availability for any particular purpose of the recipient. The user is responsible for the results obtained from the use of these data. The user shall not be held liable for any damage or loss resulting from the use of these data. The recipient may not transfer these data to others without also transferring this disclaimer. The information depicted on this map represents the results of a survey conducted on or about the date of the survey. It is not intended to represent the general condition existing at that time.

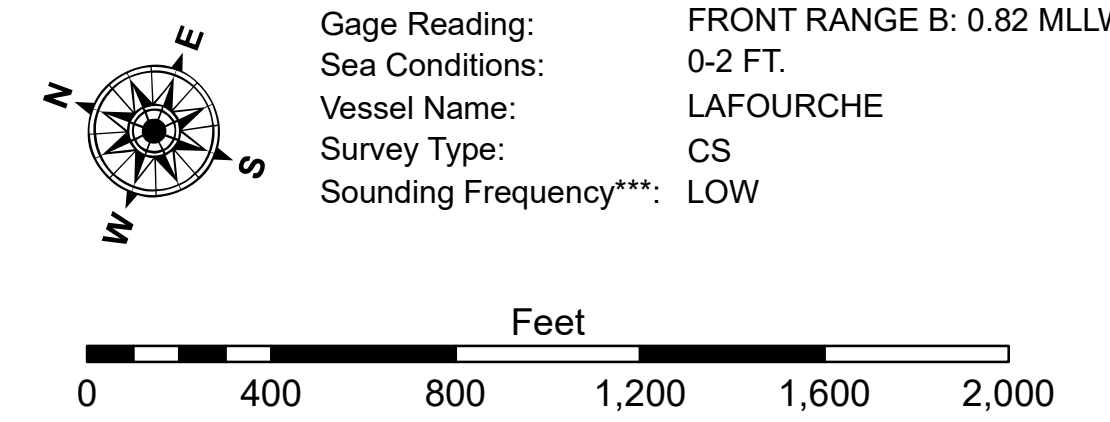
Submitted:	Surveyed By: RYLAND/CHAMPINE
Recommended:	Plotted By: JH
Approved:	Checked By: JH

U.S. ARMY CORPS OF ENGINEERS
 NEW ORLEANS DISTRICT
 Chief, Waterways Maintenance Section

**HOUMA NAVIGATION CANAL
 BAY CHANNEL
 HN_15_BAY_20240711_CS
 11 July 2024**



LEGEND			
--- Federal Navigation Channel	○ Cable Area	3 Fluff Thickness (feet)*	-8' and above
— Federal Navigation Center Line	□ Placement Area	● Shoalest Sounding**	-8' to -10'
— As-built Pipeline/Cable	⊗ Anchorage Area	☆ Beacon, General	-10' to -12'
..... Unconfirmed Pipeline/Cable	⊗ Obstruction Point	◆ Red Navigation Buoy	-12' to -16'
— Project Depth Contour	⚓ Wrecks-Submerged	◆ Green Navigation Buoy	-16' to -19'
			-19' and below



NOTES:
 Horizontal Coordinate System:
 North American Datum of 1983 (NAD83), projected to the State Plane Coordinate System (SPCS), Louisiana South Zone. Distance units in U.S. Survey Feet.
 Vertical Datum:
 Soundings are shown in feet and indicate depths below Mean Lower Low Water Datum (MLLW). Datum Relationships for 88455 as of September 2022:
 0.0' NAVD88 (OPUS 2019) = 0.40' MLLW (2012-2016) = 1.40' MLG
 Distances on the Houma Nav. Canal are shown at 1 mile intervals.
 The location of navigation aids are base on and provided by the U.S. Coast Guard and USACE survey crews.
 2022 Aerial Photography data source: Optimal GEO, Inc. (1998 DOQQ Imagery in green)
 Reference is N.O.A. Navigation Chart No. 11355.
 * Difference between high and low frequency elevations where greater than 1.0'.
 ** Shoalest Sounding per Quarter per Reach.
 *** High frequency (200 kHz) survey data represents the first signal return at a sounding location and will include suspended solids, known as "fluff", if present. Low frequency (20 kHz) survey data normally penetrates through this "fluff" layer to depict elevations of consolidated bottom material. Low frequency accuracies may vary depending on channel conditions and fathometer settings.

**Sheet Reference Number
 15 of 19**