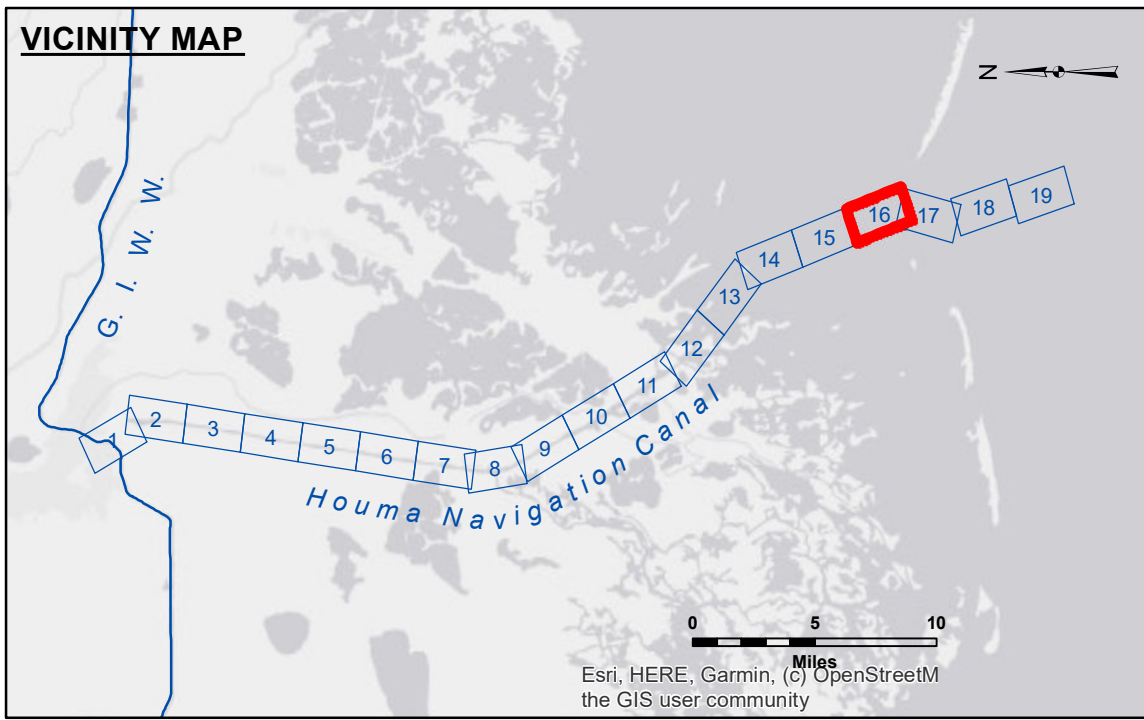


DISCLAIMER
 The data represented on this map represents the results of a collection of data for a specific US Army Corps of Engineers project. It is only valid for its intended use, content, time and accuracy specifications. The user is responsible for the results of any use of this data for other than its intended purpose.
 Data Collection: Hydrographic survey data is subject to change rapidly due to several factors including but not limited to changing hydrological conditions which develop after the date of the survey. The user is responsible for the results of any use of this data for other than its intended purpose.
 The information depicted on this map represents the results of a survey conducted by the US Army Corps of Engineers and is not to be used for any purpose other than that for which it was intended. The user is responsible for the results of any use of this data for other than its intended purpose.

Submitted:	Surveyed By: PM/SPS
Recommended:	Plotted By: BD
Checked:	Chart, Survey Section
Approved:	Chart, Waterways Maintenance Section

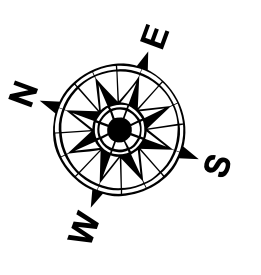
U.S. ARMY CORPS OF ENGINEERS
 NEW ORLEANS DISTRICT

**HOUMA NAVIGATION CANAL
 BAY CHANNEL
 HN_16_BAY_20191106_CS
 06 November 2019**

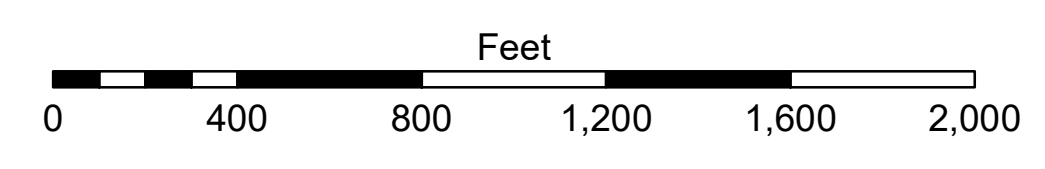


LEGEND

--- Federal Navigation Channel	○ Cable Area	□ Borrow Area	■ -12' and above
— Federal Navigation Center Line	□ Placement Area	● Shoalest Sounding**	■ -12' to -15'
— As-built Pipeline/Cable	□ Anchorage Area	★ Beacon, General	■ -15' to -18'
..... Unconfirmed Pipeline/Cable	⊗ Obstruction Point	◆ Red Navigation Buoy	■ -18' and below
— Project Depth Contour	⚓ Wrecks-Submerged	◆ Green Navigation Buoy	



Gage Reading: TIMBALIER ISLAND: 1.83 MLG
 Sea Conditions: CALM
 Vessel Name: OB-169
 Survey Type: CONDITION
 Sounding Frequency***: LOW



NOTES:
 Horizontal Coordinate System:
 North American Datum of 1983 (NAD83), projected to the State Plane Coordinate System (SPCS), Louisiana South Zone. Distance units in U.S. Survey Feet.
 Vertical Datum:
 Soundings are shown in feet and indicate depths below Mean Low Gulf Datum (MLG).
 Datum Relationships for 76305 as of August 2014:
 0.0' NAVD88 (OPUS 2010) = 0.42' MLLW (2007-2011) = 1.34' MLG
 Distances on the Houma Nav. Canal are shown at 1 mile intervals.
 The location of navigation aids are base on and provided by the U.S. Coast Guard and USACE survey crews.
 2015 Aerial Photography data source: NAIP
 Reference is N.O.A.A. Navigation Chart No. 11355.
 ** Shoalest Sounding per Quarter per Reach.
 *** High frequency (200 kHz) survey data represents the first signal return at a sounding location and will include suspended solids, known as "fluff", if present. Low frequency (20 kHz) survey data normally penetrates through this "fluff" layer to depict elevations of consolidated bottom material. Low frequency accuracies may vary depending on channel conditions and fathometer settings.

**Sheet Reference Number
 16 of 19**