

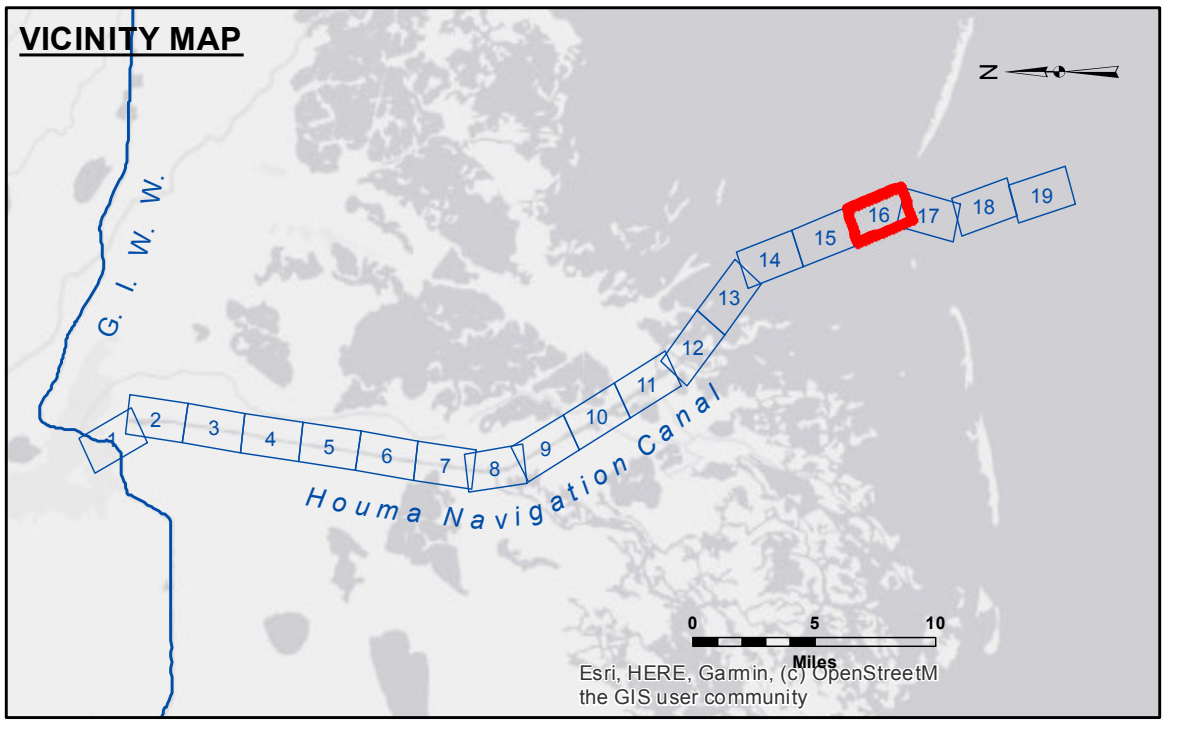
**DISCLAIMER**  
 The data represented on this map is the result of data collection and processing for a specific US Army Corps of Engineers project. It is not intended for use in any other project, and its use for any other purpose is at the user's risk. The user is responsible for the accuracy, reliability, and availability of the data for their intended purpose. The user is also responsible for the accuracy, reliability, and availability of the data for their intended purpose. The user is also responsible for the accuracy, reliability, and availability of the data for their intended purpose. The user is also responsible for the accuracy, reliability, and availability of the data for their intended purpose.

Surveyed By:	JDH/JA
Plotted By:	AO
Checked By:	AC
Submitted:	
Recommended:	Chief, Survey Section
Approved:	Chief, Waterways Maintenance Section

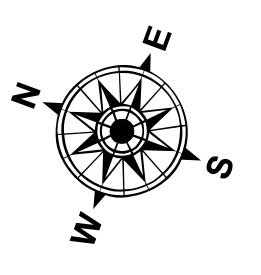
**HOUMA NAVIGATION CANAL  
 BAY CHANNEL  
 HN\_16\_BAY\_20201030\_CS\_POSTSTORM  
 30 October 2020**

**Sheet Reference Number  
 16 of 19**

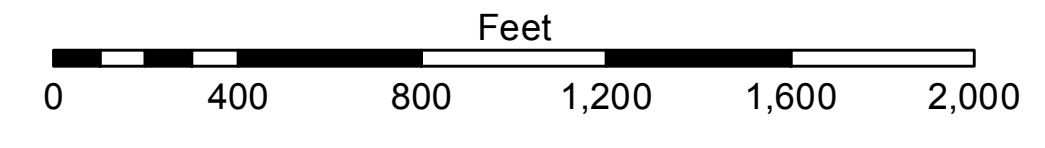
Revision Number:  
 4.1-20191105



LEGEND			
--- Federal Navigation Channel	○ Cable Area	3 Fluff Thickness (feet)*	-12' and above
— Federal Navigation Center Line	□ Placement Area	● Shoalest Sounding**	-12' to -15'
— As-built Pipeline/Cable	□ Anchorage Area	★ Beacon, General	-15' to -18'
..... Unconfirmed Pipeline/Cable	⊗ Obstruction Point	◆ Red Navigation Buoy	-18' and below
— Project Depth Contour	✦ Wrecks-Submerged	◆ Green Navigation Buoy	



Gage Reading: RANGE B: 2.0 MLG AVG  
 2-3  
 Sea Conditions: M/V VALENTOUR  
 Vessel Name: CONDITION  
 Survey Type: CONDITON  
 Sounding Frequency\*\*\*: LOW



**NOTES:**  
 Horizontal Coordinate System:  
 North American Datum of 1983 (NAD83), projected to the State Plane Coordinate System (SPCS), Louisiana South Zone. Distance units in U.S. Survey Feet.  
 Vertical Datum:  
 Soundings are shown in feet and indicate depths below Mean Low Gulf Datum (MLG).  
 Datum Relationships for 76305 as of August 2014:  
 0.0' NAVD88 (OPUS 2010) = 0.42' MLLW (2007-2011) = 1.34' MLG  
 Distances on the Houma Nav. Canal are shown at 1 mile intervals.  
 The location of navigation aids are base on and provided by the U.S. Coast Guard and USACE survey crews.  
 2015 Aerial Photography data source: NAIP  
 Reference is N.O.A.A. Navigation Chart No. 11355.  
 \* Difference between high and low frequency elevations where greater than 1.0'.  
 \*\* Shoalest Sounding per Quarter per Reach.  
 \*\*\* High frequency (200 kHz) survey data represents the first signal return at a sounding location and will include suspended solids, known as "fluff", if present. Low frequency (20 kHz) survey data normally penetrates through this "fluff" layer to depict elevations of consolidated bottom material. Low frequency accuracies may vary depending on channel conditions and fathometer settings.