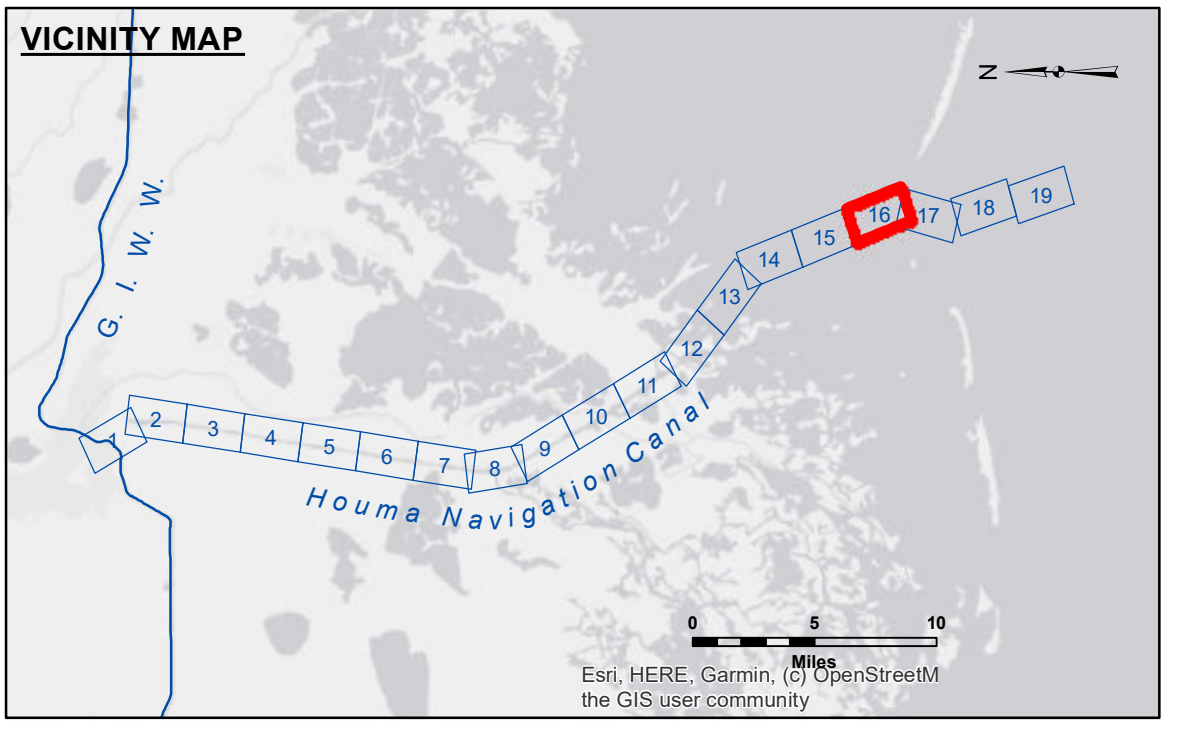


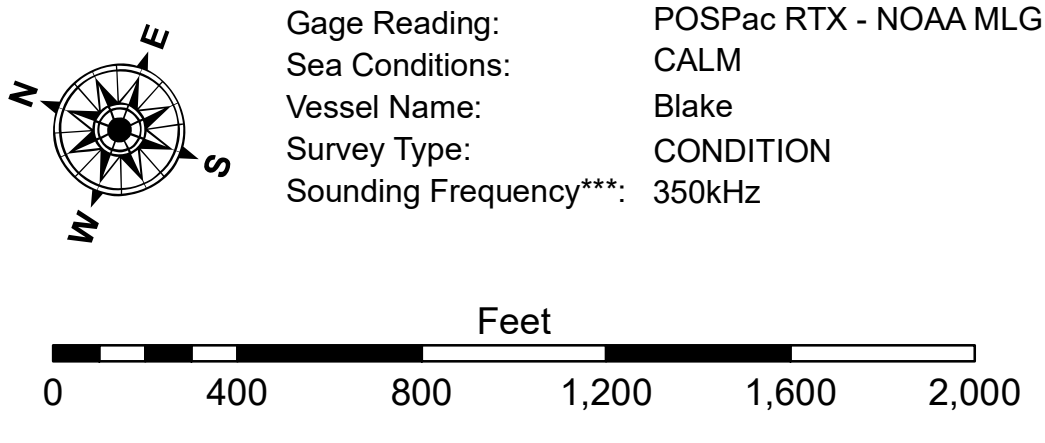
DISCLAIMER
 The United States Government furnishes these data and the recipient accepts them with the express understanding that the data are not to be used for any purpose other than that for which they were originally prepared. The user is responsible for the results of any use of the data for other than its intended purpose. The recipient may not transfer these data to others without obtaining the permission of the United States Government. The recipient may not transfer these data to others without obtaining the permission of the United States Government. The recipient may not transfer these data to others without obtaining the permission of the United States Government. The recipient may not transfer these data to others without obtaining the permission of the United States Government.

Submitted By:	David Evans and Associates
Plotted By:	BD
Recommended By:	Chart Survey Section
Checked By:	AC
Approved:	Chart, Waterways Maintenance Section

**HOUMA NAVIGATION CANAL
 BAY CHANNEL
 HN_16_BAY_20210905_CS_POSTIDA
 05 September 2021**



LEGEND			
--- Federal Navigation Channel	○ Cable Area	3 Fluff Thickness (feet)*	-12' and above
— Federal Navigation Center Line	□ Placement Area	● Shoalest Sounding**	-12' to -15'
— As-built Pipeline/Cable	□ Anchorage Area	★ Beacon, General	-15' to -18'
..... Unconfirmed Pipeline/Cable	⊗ Obstruction Point	◆ Red Navigation Buoy	-18' and below
— Project Depth Contour	✈ Wrecks-Submerged	◆ Green Navigation Buoy	



NOTES:
 Horizontal Coordinate System: North American Datum of 1983 (NAD83), projected to the State Plane Coordinate System (SPCS), Louisiana South Zone. Distance units in U.S. Survey Feet.
 Soundings are shown in feet and indicate depths below Mean Low Gulf Datum (MLG). Datum Relationships for 76305 as of August 2014: 0.0' NAVD88 (OPUS 2010) = 0.42' MLLW (2007-2011) = 1.34' MLG
 Distances on the Houma Nav. Canal are shown at 1 mile intervals.
 The location of navigation aids are base on and provided by the U.S. Coast Guard and USACE survey crews.
 2015 Aerial Photography data source: NAIP
 Reference is N.O.A.A. Navigation Chart No. 11355.
 * Difference between high and low frequency elevations where greater than 1.0'.
 ** Shoalest Sounding per Quarter per Reach.
 *** High frequency (200 kHz) survey data represents the first signal return at a sounding location and will include suspended solids, known as "fluff", if present. Low frequency (20 kHz) survey data normally penetrates through this "fluff" layer to depict elevations of consolidated bottom material. Low frequency accuracies may vary depending on channel conditions and fathometer settings.

**Sheet Reference Number
 16 of 19**