

DISCLAIMER
The information depicted on this map represents the results of a hydrographic survey conducted under the authority of the U.S. Army Corps of Engineers. The user is responsible for the accuracy, completeness, reliability, usability, or timeliness of the information. The user is responsible for the accuracy, completeness, reliability, usability, or timeliness of the information. The user is responsible for the accuracy, completeness, reliability, usability, or timeliness of the information.

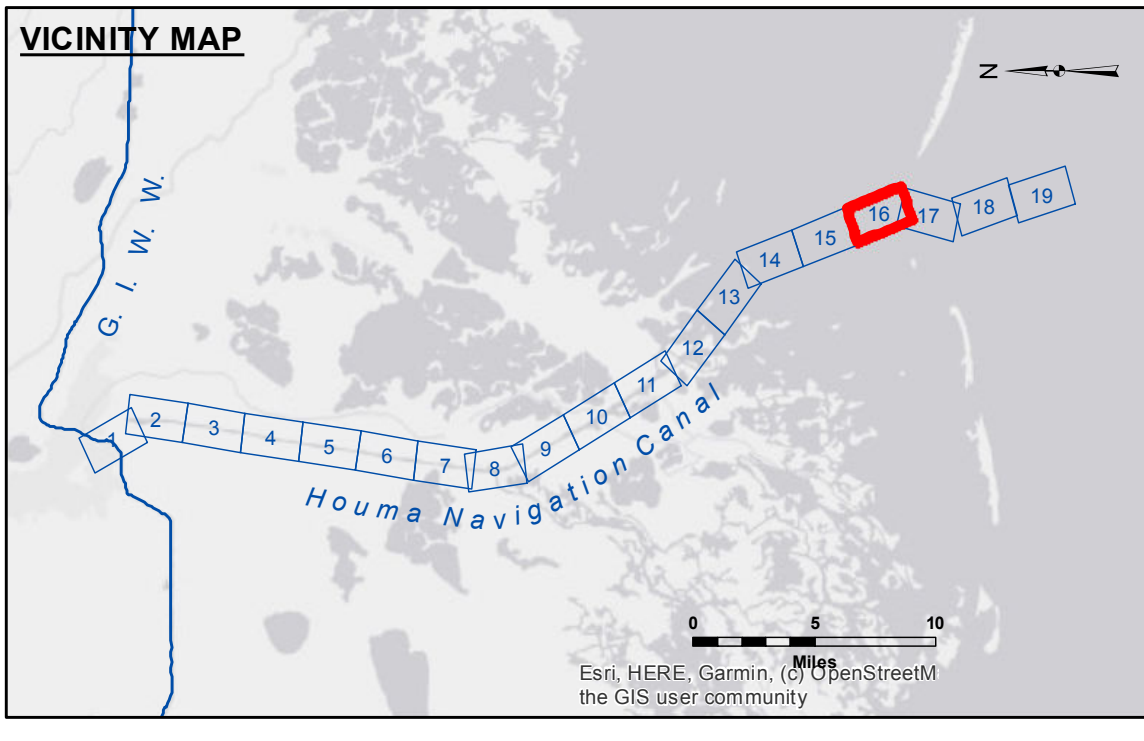
| | |
|------------|-------|
| Submitted: | SP-PM |
| Reviewed: | BD |
| Checked: | AC |

U.S. ARMY CORPS OF ENGINEERS
NEW ORLEANS DISTRICT
Chief, Waterways Maintenance Section

**HOUMA NAVIGATION CANAL
BAY CHANNEL
HN_16_BAY_20211015_CS
15 October 2021**

**Sheet Reference Number
16 of 19**

Revision Number:
4.2-20210420



| | | | |
|----------------------------------|---------------------|---------------------------|----------------|
| --- Federal Navigation Channel | ○ Cable Area | 3 Fluff Thickness (feet)* | -12' and above |
| — Federal Navigation Center Line | □ Placement Area | ● Shoalest Sounding** | -12' to -15' |
| — As-built Pipeline/Cable | □ Anchorage Area | ★ Beacon, General | -15' to -18' |
| Unconfirmed Pipeline/Cable | ⊗ Obstruction Point | ◆ Red Navigation Buoy | -18' and below |
| — Project Depth Contour | ⚓ Wrecks-Submerged | ◆ Green Navigation Buoy | |

Gage Reading: RANGE B: 2.21 MLG AVG.
Sea Conditions: CHOPPY
Vessel Name: OB-169
Survey Type: CONDITION
Sounding Frequency***: LOW

NOTES:
Horizontal Coordinate System:
North American Datum of 1983 (NAD83), projected to the State Plane Coordinate System (SPCS), Louisiana South Zone. Distance units in U.S. Survey Feet.
Vertical Datum:
Soundings are shown in feet and indicate depths below Mean Low Gulf Datum (MLG).
Datum Relationships for 76305 as of August 2014:
0.0' NAVD88 (OPUS 2010) = 0.42' MLLW (2007-2011) = 1.34' MLG
Distances on the Houma Nav. Canal are shown at 1 mile intervals.
The location of navigation aids are base on and provided by the U.S. Coast Guard and USACE survey crews.
2015 Aerial Photography data source: NAIP
Reference is N.O.A.A. Navigation Chart No. 11355.
* Difference between high and low frequency elevations where greater than 1.0'.
** Shoalest Sounding per Quarter per Reach.
*** High frequency (200 kHz) survey data represents the first signal return at a sounding location and will include suspended solids, known as "fluff", if present. Low frequency (20 kHz) survey data normally penetrates through this "fluff" layer to depict elevations of consolidated bottom material. Low frequency accuracies may vary depending on channel conditions and bathymeter settings.