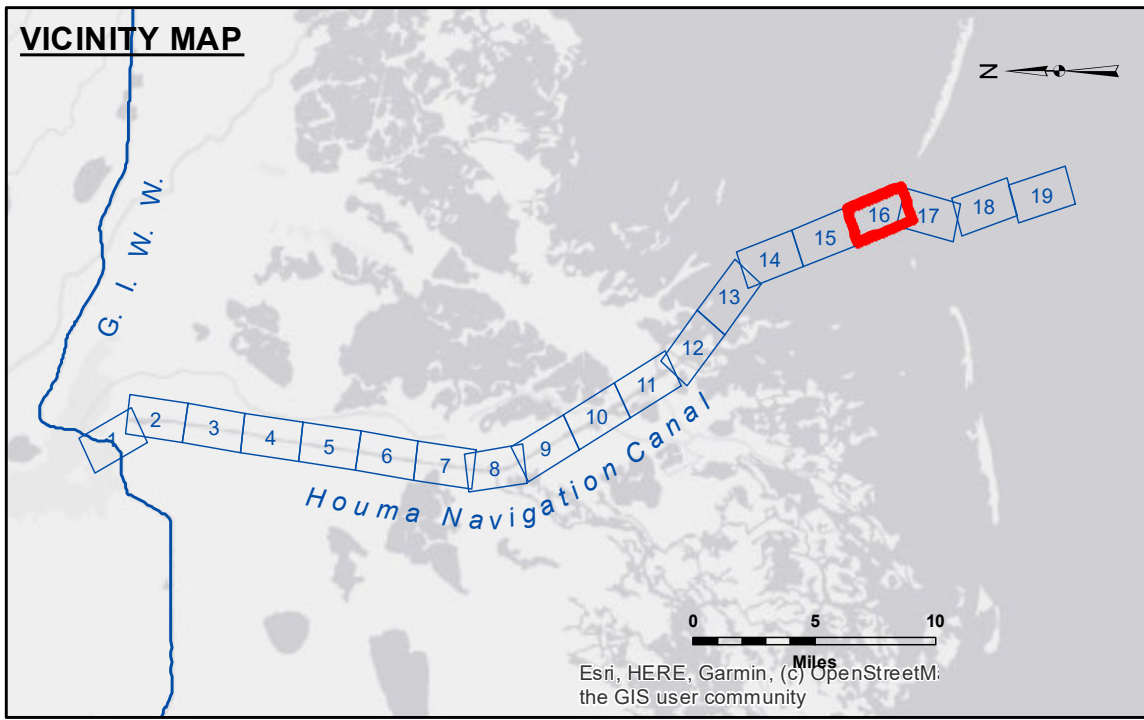


DISCLAIMER: The data represents the results of data collection performed for a specific US Army Corps of Engineers project and is only valid for its intended use, control, time and accuracy specifications. The user is responsible for the results of any application of the data for other than its intended purpose. Data Constants: Hydrographic survey data is subject to change rapidly due to several factors including but not limited to dredging operations, changes in bathymetry, and changes in the hydrographical conditions when developed after the date of the survey. The user is responsible for the results of any application of the data for other than its intended purpose. The information depicted on this map represents the results of a survey and is not intended to be used for navigation purposes. The user is responsible for the results of any application of the data for other than its intended purpose.

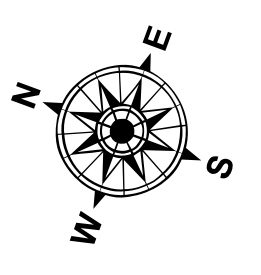
Submitted:	Surveyed By: PM,JA
Recommended:	Plotted By: AO
Approved:	Checked By: AO

U.S. ARMY CORPS OF ENGINEERS
NEW ORLEANS DISTRICT
Chief, Waterways Maintenance Section

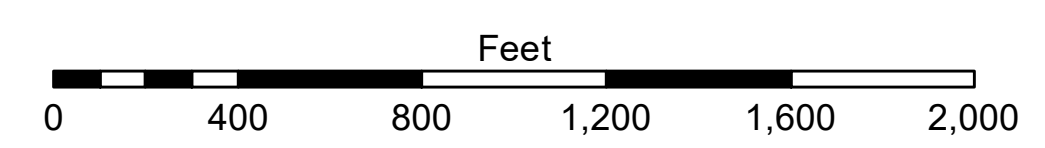
**HOUMA NAVIGATION CANAL
BAY CHANNEL
HN_16_BAY_20221207_CS
07 December 2022**



LEGEND			
--- Federal Navigation Channel	○ Cable Area	3 Fluff Thickness (feet)*	-8' and above
— Federal Navigation Center Line	□ Placement Area	● Shoalest Sounding**	-8' to -10'
— As-built Pipeline/Cable	□ Anchorage Area	★ Beacon, General	-10' to -12'
..... Unconfirmed Pipeline/Cable	⊗ Obstruction Point	◆ Red Navigation Buoy	-12' to -16'
— Project Depth Contour	✈ Wrecks-Submerged	◆ Green Navigation Buoy	-16' to -19'
			-19' and below



Gage Reading: COCODRIE/RANGE B: 0.3 MLLW AVG
Sea Conditions: CHOPPY
Vessel Name: OB-167
Survey Type: CONDITION
Sounding Frequency***: LOW



NOTES:
Horizontal Coordinate System: North American Datum of 1983 (NAD83), projected to the State Plane Coordinate System (SPCS), Louisiana South Zone. Distance units in U.S. Survey Feet.
Vertical Datum: Mean Lower Low Water Datum (MLLW).
Soundings are shown in feet and indicate depths below Mean Lower Low Water Datum (MLLW).
Datum Relationships for 88455 as of September 2022:
0.0' NAVD88 (OPUS 2019) = 0.40' MLLW (2012-2016) = 1.40' MLG
Distances on the Houma Nav. Canal are shown at 1 mile intervals.
The location of navigation aids are base on and provided by the U.S. Coast Guard and USACE survey crews.
2022 Aerial Photography data source: Optimal GEO, Inc. (1998 DOQQ Imagery in green)
Reference is N.O.A. Navigation Chart No. 11355.
* Difference between high and low frequency elevations where greater than 1.0'.
** Shoalest Sounding per Quarter per Reach.
*** High frequency (200 kHz) survey data represents the first signal return at a sounding location and will include suspended solids, known as "fluff", if present. Low frequency (20 kHz) survey data normally penetrates through this "fluff" layer to depict elevations of consolidated bottom material. Low frequency accuracies may vary depending on channel conditions and fathometer settings.

**Sheet Reference Number
16 of 19**