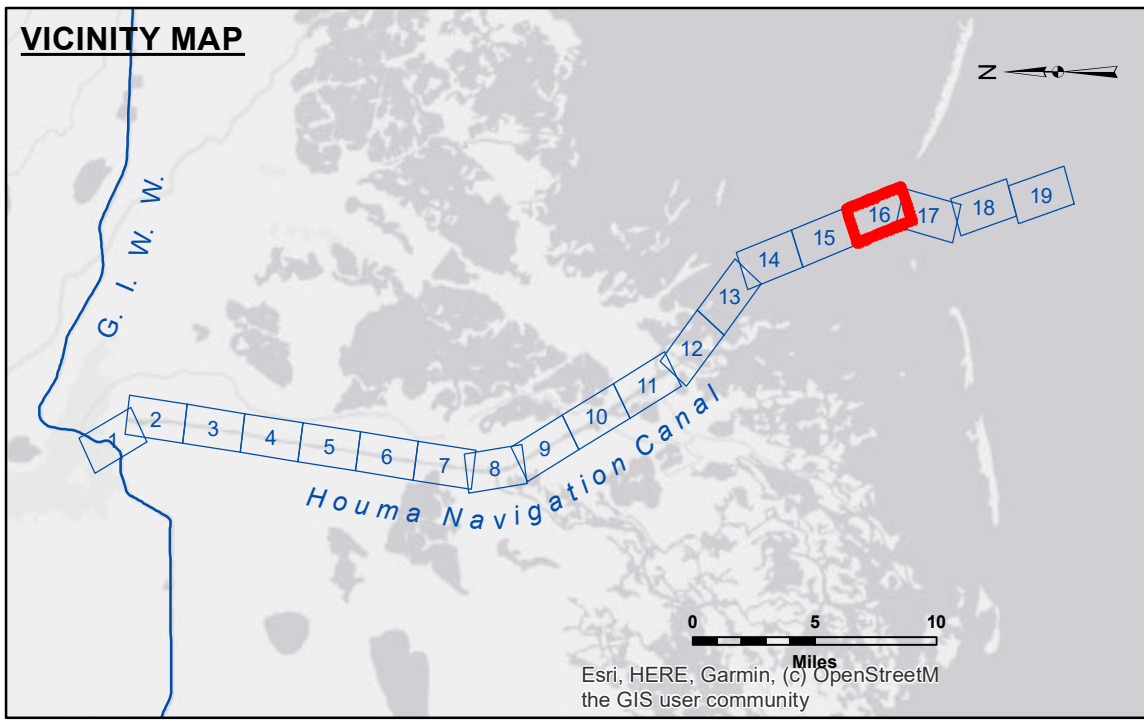


DISCLAIMER
 The data represented on this map is the result of data collection/processing for a specific US Army Corps of Engineers project. It is only valid for its intended use, content, time and accuracy specifications. The user is responsible for the results. The user must verify the data for other than its intended purpose.
 Data Collection: Hydrographic survey data is subject to change rapidly due to several factors including but not limited to changing hydrological conditions which develop after the date of the survey. The US Army Corps of Engineers accepts no responsibility for changes in the hydrological conditions which develop after the date of the survey. Product maintainers should not rely solely upon this information.
 Access: The United States Government furnishes these data and the recipient accepts and uses them with the express understanding that the accuracy, completeness, reliability, usability or availability for any particular purpose of the data is not guaranteed. The recipient may not transfer these data to others without also transferring this Disclaimer. The information depicted on this map represents the results of a survey and is not to be used for any purpose other than that for which it was intended. The recipient is considered to represent the general condition existing at that time.

Submitted:	SP-SR	Plotted By:	BD	Checked By:	ADU/JH
Recommended:	Chart Survey Section	Approved:			

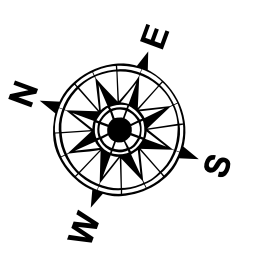
U.S. ARMY CORPS OF ENGINEERS
 NEW ORLEANS DISTRICT
 Chart: Waterways Maintenance Section

**HOUMA NAVIGATION CANAL
 BAY CHANNEL
 HN_16_BAY_20230403_CS
 03 April 2023**

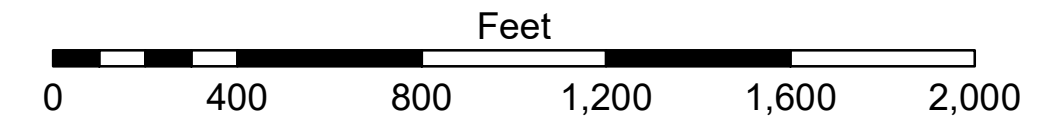


LEGEND

--- Federal Navigation Channel	○ Cable Area	3 Fluff Thickness (feet)*	-8' and above
— Federal Navigation Center Line	□ Placement Area	● Shoalest Sounding**	-8' to -10'
— As-built Pipeline/Cable	□ Anchorage Area	★ Beacon, General	-10' to -12'
..... Unconfirmed Pipeline/Cable	⊗ Obstruction Point	◆ Red Navigation Buoy	-12' to -16'
— Project Depth Contour	✈ Wrecks-Submerged	◆ Green Navigation Buoy	-16' to -19'
			-19' and below



Gage Reading: RANGE MARKER B: 1.16 MLLW AVG
 Sea Conditions: CHOPPY
 Vessel Name: OB-169
 Survey Type: CONDITION
 Sounding Frequency***: LOW



NOTES:
 Horizontal Coordinate System:
 North American Datum of 1983 (NAD83), projected to the State Plane Coordinate System (SPCS), Louisiana South Zone. Distance units in U.S. Survey Feet.
 Vertical Datum:
 Soundings are shown in feet and indicate depths below Mean Lower Low Water Datum (MLLW).
 Datum Relationships for 88455 as of September 2022:
 0.0' NAVD88 (OPUS 2019) = 0.40' MLLW (2012-2016) = 1.40' MLG
 Distances on the Houma Nav. Canal are shown at 1 mile intervals.
 The location of navigation aids are base on and provided by the U.S. Coast Guard and USACE survey crews.
 2022 Aerial Photography data source: Optimal GEO, Inc. (1998 DOQQ Imagery in green)
 Reference is N.O.A.A. Navigation Chart No. 11355.
 * Difference between high and low frequency elevations where greater than 1.0'.
 ** Shoalest Sounding per Quarter per Reach.
 *** High frequency (200 kHz) survey data represents the first signal return at a sounding location and will include suspended solids, known as "fluff", if present. Low frequency (20 kHz) survey data normally penetrates through this "fluff" layer to depict elevations of consolidated bottom material. Low frequency accuracies may vary depending on channel conditions and fathometer settings.

**Sheet Reference Number
 16 of 19**

Revision Number:
 4-2-2023(0428)