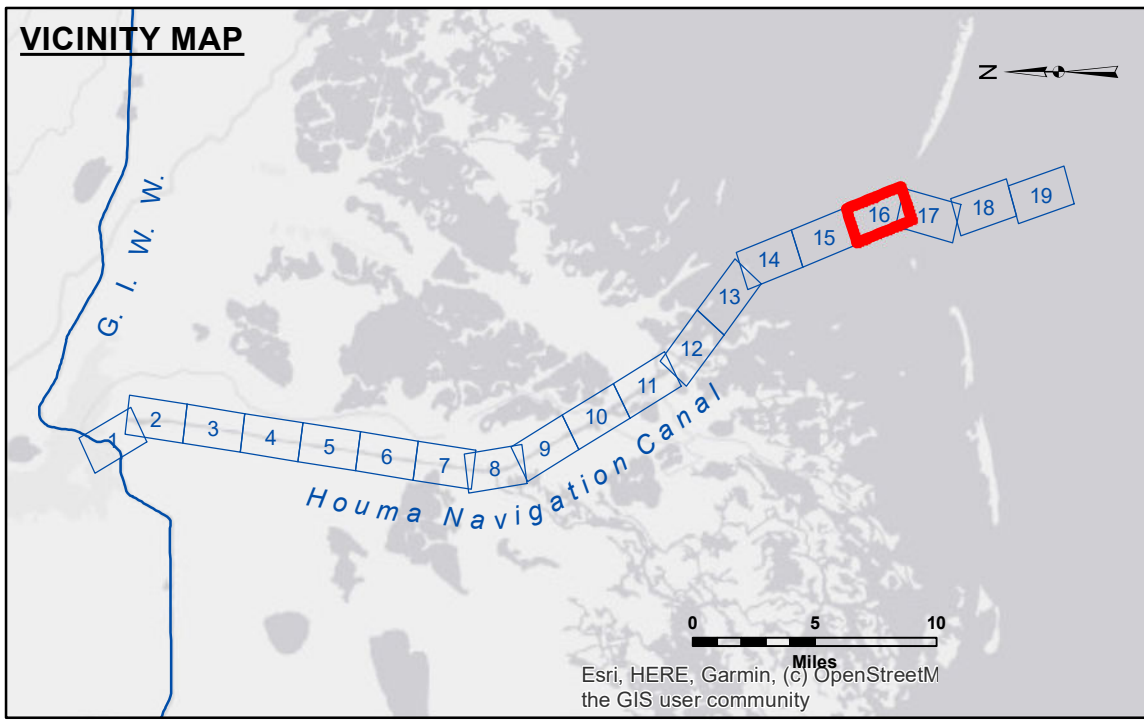


**DISCLAIMER:** The data represented on this map is the result of a collection of data for a specific US Army Corps of Engineers project. It is only valid for its intended use, content, time and accuracy specifications. The user is responsible for the results of their use. The Corps of Engineers does not accept responsibility for changes in the hydrographical conditions which develop after the date of the original survey. Prudent mariners should not rely solely upon this information.

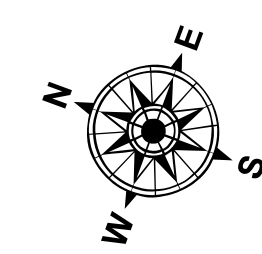
Submitted:	Surveyed By: PM, DR
Recommended:	Plotted By: BD
Approved:	Checked By: ADJ/H

U.S. ARMY CORPS OF ENGINEERS  
NEW ORLEANS DISTRICT

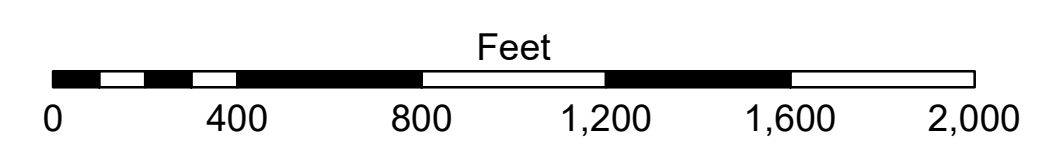
**HOUMA NAVIGATION CANAL  
BAY CHANNEL**  
HN\_16\_BAY\_20230913\_CS  
13 September 2023



LEGEND	
--- Federal Navigation Channel	● Cable Area
— Federal Navigation Center Line	□ Placement Area
— As-built Pipeline/Cable	□ Anchorage Area
..... Unconfirmed Pipeline/Cable	⊗ Obstruction Point
— Project Depth Contour	✶ Wrecks-Submerged
3 Fluff Thickness (feet)*	★ Beacon, General
● Shoalest Sounding**	♦ Red Navigation Buoy
★ Beacon, General	♦ Green Navigation Buoy



Gage Reading: TIMBALIER ISLAND: 2.0 MLLW  
Sea Conditions: CALM  
Vessel Name: OB-167  
Survey Type: CONDITION  
Sounding Frequency\*\*\*: LO



**NOTES:**  
Horizontal Coordinate System: North American Datum of 1983 (NAD83), projected to the State Plane Coordinate System (SPCS), Louisiana South Zone. Distance units in U.S. Survey Feet.  
Vertical Datum: Soundings are shown in feet and indicate depths below Mean Lower Low Water Datum (MLLW). Datum Relationships for 88455 as of September 2022: 0.0' NAVD88 (OPUS 2019) = 0.40' MLLW (2012-2016) = 1.40' MLG  
Distances on the Houma Nav. Canal are shown at 1 mile intervals.  
The location of navigation aids are base on and provided by the U.S. Coast Guard and USACE survey crews.  
2022 Aerial Photography data source: Optimal GEO, Inc. (1998 DOQQ Imagery in green)  
Reference is N.O.A. Navigation Chart No. 11355.  
\* Difference between high and low frequency elevations where greater than 1.0'.  
\*\* Shoalest Sounding per Quarter per Reach.  
\*\*\* High frequency (200 kHz) survey data represents the first signal return at a sounding location and will include suspended solids, known as "fluff", if present. Low frequency (20 kHz) survey data normally penetrates through this "fluff" layer to depict elevations of consolidated bottom material. Low frequency accuracies may vary depending on channel conditions and fathometer settings.

**Sheet Reference Number**  
16 of 19  
Revision Number: 4-2-2024(42)