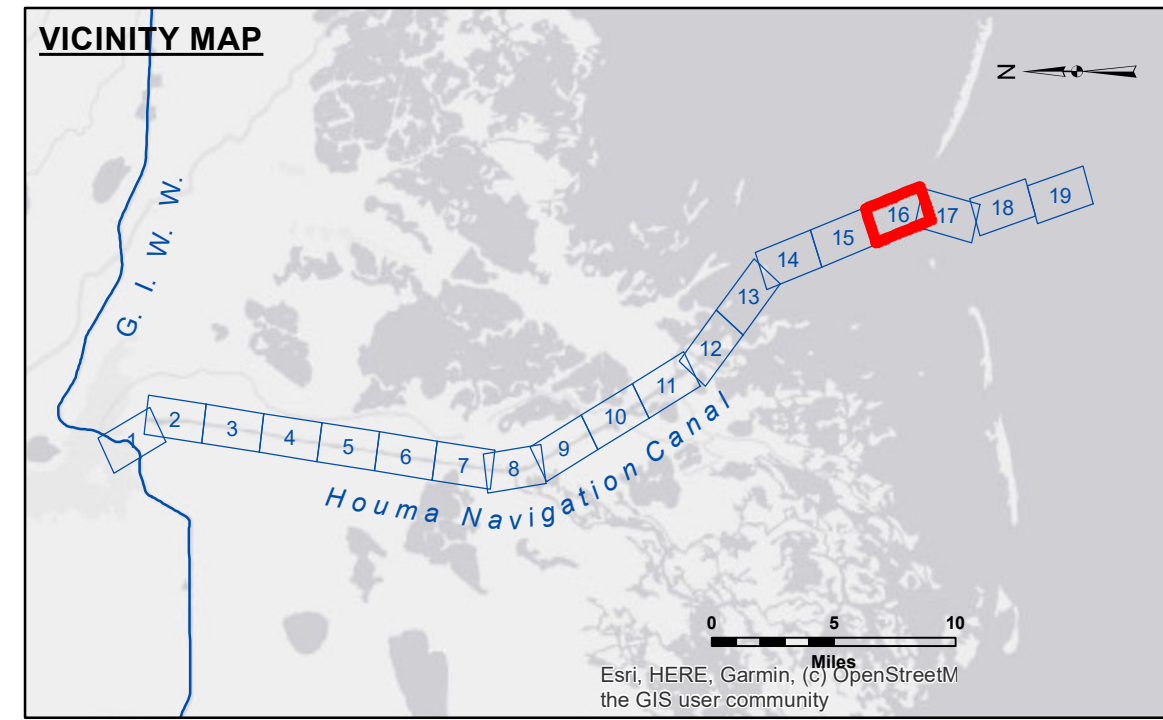


P.C. 6 1890+09.85  
 X = 3,522,320.13  
 Y = 221,166.34

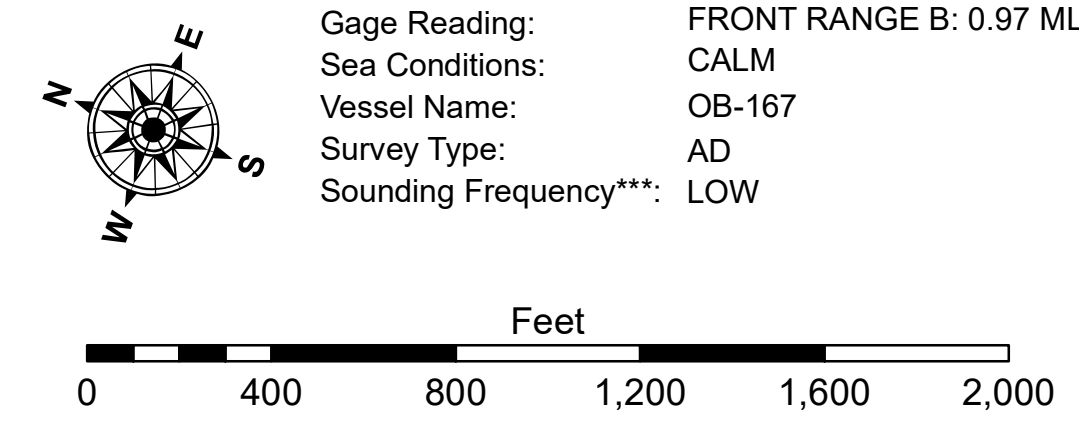
CURVE 3 DATA  
 Δ = 42° 18' 08.1996"  
 D = 01° 09' 45.3966"  
 T = 1906.6903'  
 R = 4928.2024'  
 L = 3638.5610'

SPD MI. 2.5  
 X=3,517,470  
 Y=227,124



LEGEND		
--- Federal Navigation Channel	○ Cable Area	3 Fluff Thickness (feet)*
— Federal Navigation Center Line	□ Placement Area	● Shoalest Sounding**
— As-built Pipeline/Cable	⊗ Anchorage Area	★ Beacon, General
⋯ Unconfirmed Pipeline/Cable	⊗ Obstruction Point	◆ Red Navigation Buoy
— Project Depth Contour	⚓ Wrecks-Submerged	◆ Green Navigation Buoy

Red	-8' and above
Orange	-8' to -10'
Yellow	-10' to -12'
Light Green	-12' to -16'
Light Blue	-16' to -19'
Dark Blue	-19' and below



**DISCLAIMER**  
 The information depicted on this map represents the results of a survey conducted for the purpose of navigation. It is not intended for use in any other capacity. The user is responsible for the accuracy, completeness, and reliability of the information. The user is responsible for the results of any use of this information. The user is responsible for the results of any use of this information. The user is responsible for the results of any use of this information.

U.S. ARMY CORPS OF ENGINEERS NEW ORLEANS DISTRICT		
Submitted:	AD/AM/S/CHAMPINE	
Recommended:	CH/ST/SURVEY SECTION	
Approved:	CH/ST/WATERWAYS MAINTENANCE SECTION	
	Surveyed By:	JH
	Plotted By:	JH
	Checked By:	JH

**HOUMA NAVIGATION CANAL  
 BAY CHANNEL  
 HN\_16\_BAY\_20240201\_AD  
 01 February 2024**

**Sheet Reference Number  
 16 of 19**

Revision Number:  
 4-2-2024(4/2)