

P.C. 6 1890+09.85
 X=3,522,320.13
 Y=221,166.34

CURVE 3 DATA
 Δ = 42°18'08.1996"
 D = 01°09'45.3966"
 T = 1906.6903'
 R = 4928.2024'
 L = 3638.5610'

SPD MI. 2.5
 X=3,517,470
 Y=227,124

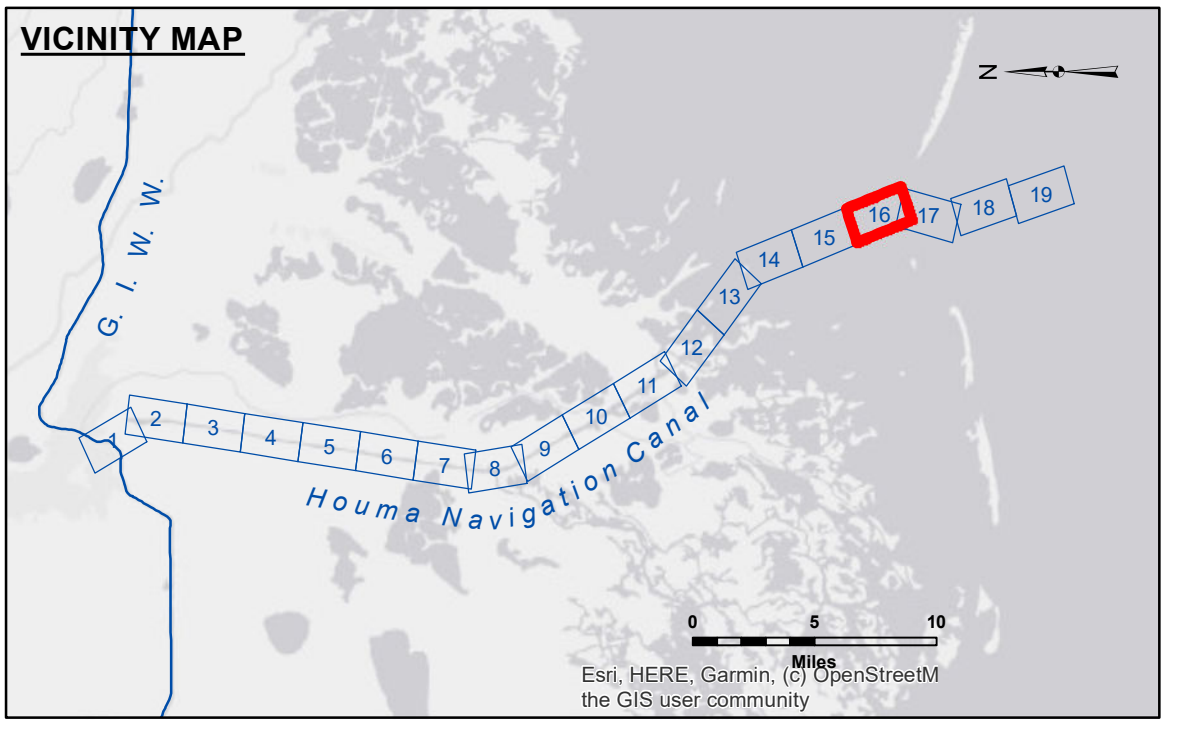


DISCLAIMER
 The United States Government furnishes these data and the recipient accepts and uses them with the express understanding that the data are not warranted for any particular purpose of the recipient, and that the recipient is responsible for the results of its use. The recipient shall not be held liable for any damage or injury resulting from the use of these data. The recipient may not transfer these data to others without obtaining the permission of the United States Government. The recipient may not transfer these data to others without obtaining the permission of the United States Government. The recipient may not transfer these data to others without obtaining the permission of the United States Government. The recipient may not transfer these data to others without obtaining the permission of the United States Government.

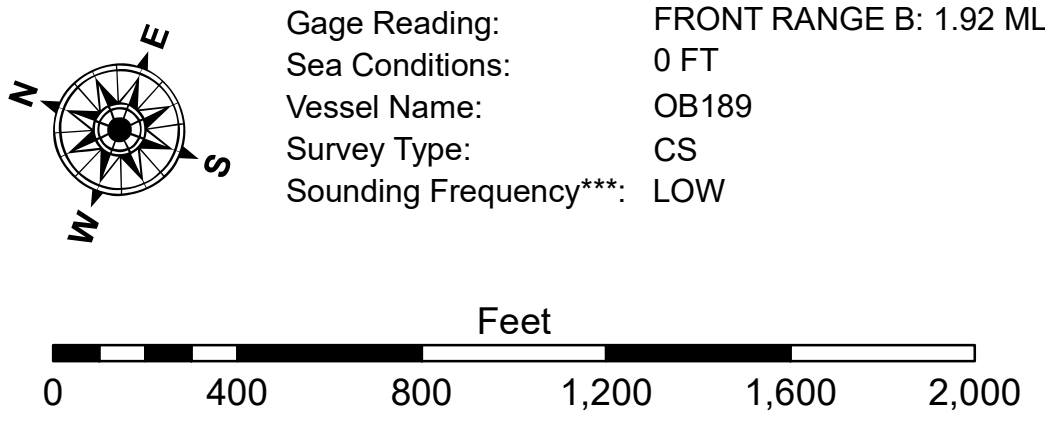
Submitted:	ADAM/SCHAMPINE
Reviewed:	JH
Checked:	JH

U.S. ARMY CORPS OF ENGINEERS
 NEW ORLEANS DISTRICT
 Chart, Waterways Maintenance Section

**HOUMA NAVIGATION CANAL
 BAY CHANNEL**
 HN_16_BAY_20240918_CS_POSTSTORM
 18 September 2024



LEGEND	
--- Federal Navigation Channel	○ Cable Area
— Federal Navigation Center Line	□ Placement Area
— As-built Pipeline/Cable	□ Anchorage Area
..... Unconfirmed Pipeline/Cable	⊗ Obstruction Point
— Project Depth Contour	✶ Wrecks-Submerged
3 Fluff Thickness (feet)*	★ Beacon, General
● Shoalest Sounding**	♦ Red Navigation Buoy
○ -8' and above	♦ Green Navigation Buoy
○ -8' to -10'	
○ -10' to -12'	
○ -12' to -16'	
○ -16' to -19'	
○ -19' and below	



NOTES:
 Horizontal Coordinate System:
 North American Datum of 1983 (NAD83), projected to the State Plane Coordinate System (SPCS), Louisiana South Zone. Distance units in U.S. Survey Feet.
 Vertical Datum:
 Soundings are shown in feet and indicate depths below Mean Lower Low Water Datum (MLLW). Datum Relationships for 88455 as of September 2022:
 0.0' NAVD88 (OPUS 2019) = 0.40' MLLW (2012-2016) = 1.40' MLG
 Distances on the Houma Nav. Canal are shown at 1 mile intervals.
 The location of navigation aids are base on and provided by the U.S. Coast Guard and USACE survey crews.
 2022 Aerial Photography data source: Optimal GEO, Inc. (1998 DOQQ Imagery in green)
 Reference is N.O.A. Navigation Chart No. 11355.
 * Difference between high and low frequency elevations where greater than 1.0'.
 ** Shoalest Sounding per Quarter per Reach.
 *** High frequency (200 kHz) survey data represents the first signal return at a sounding location and will include suspended solids, known as "fluff", if present. Low frequency (20 kHz) survey data normally penetrates through this "fluff" layer to depict elevations of consolidated bottom material. Low frequency accuracies may vary depending on channel conditions and fathometer settings.

Sheet Reference Number
 16 of 19
 Revision Number:
 4-2-2024(0420)