

**US Army Corps of Engineers District: CEMVN**

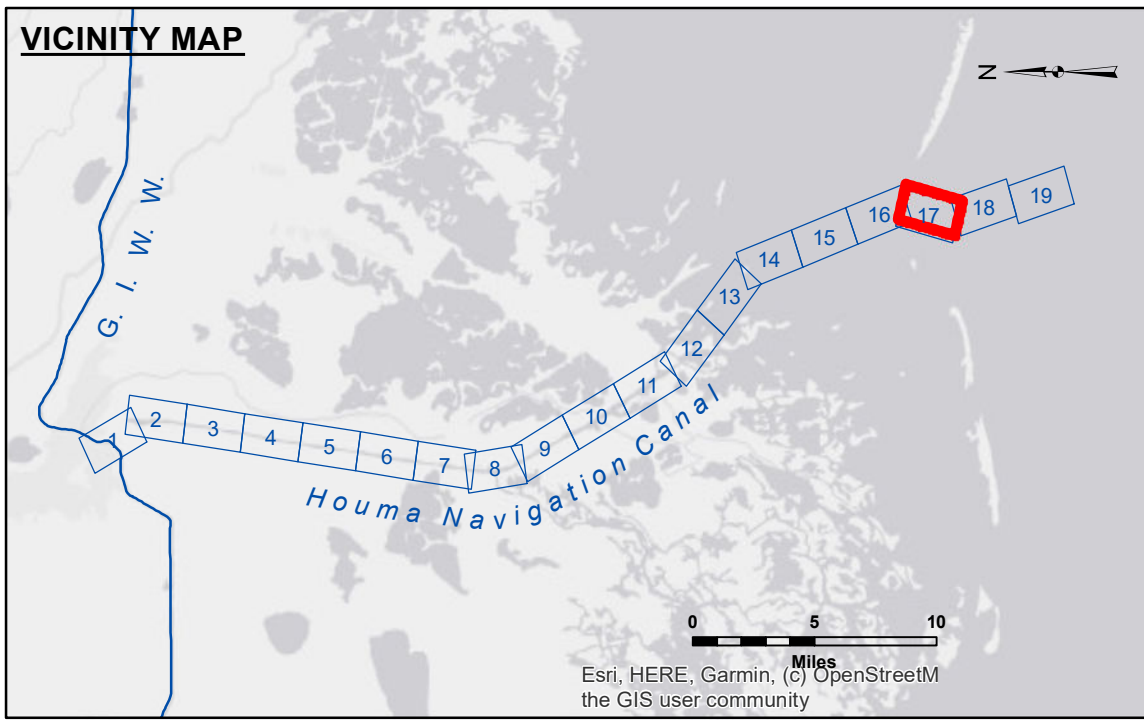
**Access/Consignments:** The United States Government furnishes these data and the recipient accepts and uses them with the express understanding that the data are not to be used for any purpose other than that for which they were originally prepared, and that the user is responsible for the results obtained therefrom. The user is responsible for the results obtained therefrom. The user is responsible for the results obtained therefrom. The user is responsible for the results obtained therefrom.

**Distribution Liability:** The data represents the results of data collection/processing for a specific US Army Corps of Engineers project. It is only valid for its intended use, content, time and accuracy specifications. The user is responsible for the results obtained therefrom. The user is responsible for the results obtained therefrom. The user is responsible for the results obtained therefrom.

**Data Constants:** Hydrographic survey data is subject to change rapidly due to several factors including but not limited to changing hydrological conditions which develop after the date of the survey. The user is responsible for the results obtained therefrom. The user is responsible for the results obtained therefrom. The user is responsible for the results obtained therefrom.

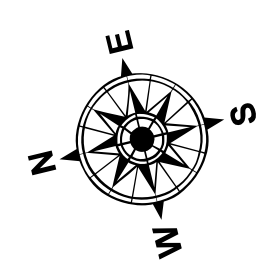
U.S. ARMY CORPS OF ENGINEERS NEW ORLEANS DISTRICT		
Submitted:	Surveyed By: SP/SR	Plotted By: BD
Recommended:	Checked By: AD/JH	Approved:
Chart, Survey Section	Chart, Waterways Maintenance Section	

**HOUMA NAVIGATION CANAL  
BAR CHANNEL  
HN\_17\_BAR\_20230403\_CS  
03 April 2023**

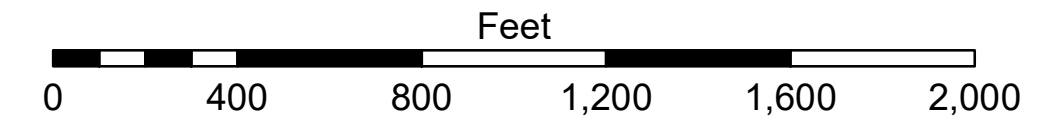


**LEGEND**

--- Federal Navigation Channel	○ Cable Area	□ Borrow Area	■ -8' and above
— Federal Navigation Center Line	□ Placement Area	● Shoalest Sounding**	■ -8' to -10'
— As-built Pipeline/Cable	□ Anchorage Area	★ Beacon, General	■ -10' to -12'
..... Unconfirmed Pipeline/Cable	⊗ Obstruction Point	◆ Red Navigation Buoy	■ -12' to -16'
— Project Depth Contour	✶ Wrecks-Submerged	◆ Green Navigation Buoy	■ -16' to -19'
			■ -19' and below



Gage Reading: RANGE MARKER B: 1.16 MLLW AVG  
 Sea Conditions: CHOPPY  
 Vessel Name: OB-169  
 Survey Type: CONDITION  
 Sounding Frequency\*\*\*: LOW



**NOTES:**  
 Horizontal Coordinate System:  
 North American Datum of 1983 (NAD83), projected to the State Plane Coordinate System (SPCS), Louisiana South Zone. Distance units in U.S. Survey Feet.  
 Vertical Datum:  
 Soundings are shown in feet and indicate depths below Mean Lower Low Water Datum (MLLW). Datum Relationships for 88450 as of September 2022:  
 0.0' NAVD88 (OPUS 2019) = 0.40' MLLW (2012-2016) = 1.40' MLG  
 Distances on the Houma Nav. Canal are shown at 1 mile intervals.  
 The location of navigation aids are base on and provided by the U.S. Coast Guard and USACE survey crews.  
 2022 Aerial Photography data source: Optimal GEO, Inc.  
 Reference is N.O.A.A. Navigation Chart No. 11355.  
 \*\* Shoalest Sounding per Quarter per Reach.  
 \*\*\* High frequency (200 kHz) survey data represents the first signal return at a sounding location and will include suspended solids, known as "fluff", if present. Low frequency (20 kHz) survey data normally penetrates through this "fluff" layer to depict elevations of consolidated bottom material. Low frequency accuracies may vary depending on channel conditions and fathometer settings.

**Sheet Reference Number  
17 of 19**

Revision Number:  
4-2-2023(0420)